



Paulmann

Safety Instructions

0,1,2,3,4,6,7,8,9,11,15,
20,22,26,27



Info

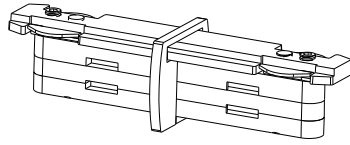
www.paulmann.com

Paulmann Licht GmbH
Quezinger Feld 2
31832 Springe
Germany

www.paulmann.com

Art.-Nr.: 951.40

(+MA173)PH10/20



1x

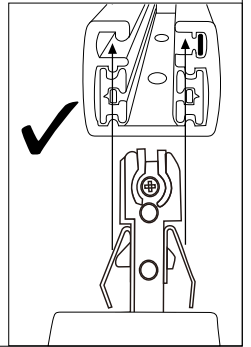
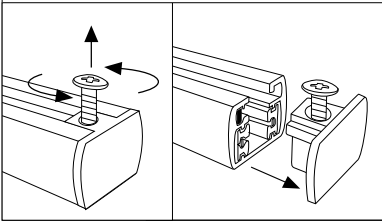
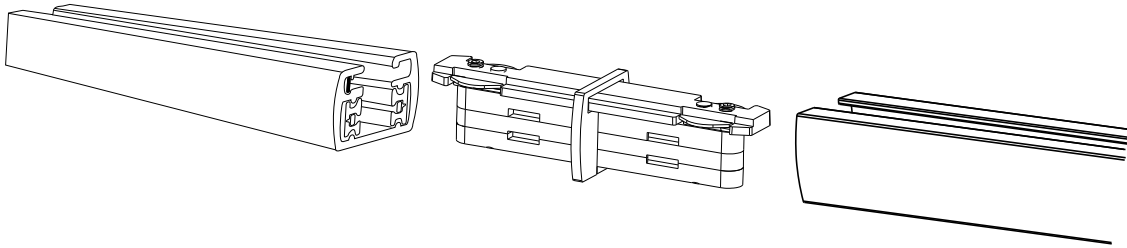


1x

A



Safety Instructions
Nr.0,2,3,4



B



Safety Instructions
Nr.0,2,3,4

