



Paulmann

# IP 20



Info

[www.paulmann.com](http://www.paulmann.com)

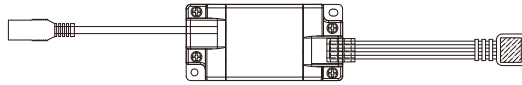
Paulmann Licht GmbH  
Quezinger Feld 2  
31832 Springe  
Germany

[www.paulmann.com](http://www.paulmann.com)

Art.-Nr.:

500.04

PKE 08/17



1X



1X

MaxLED 500/MaxLED 1000



MaxLED Tunable White



MaxLED RGBW



A

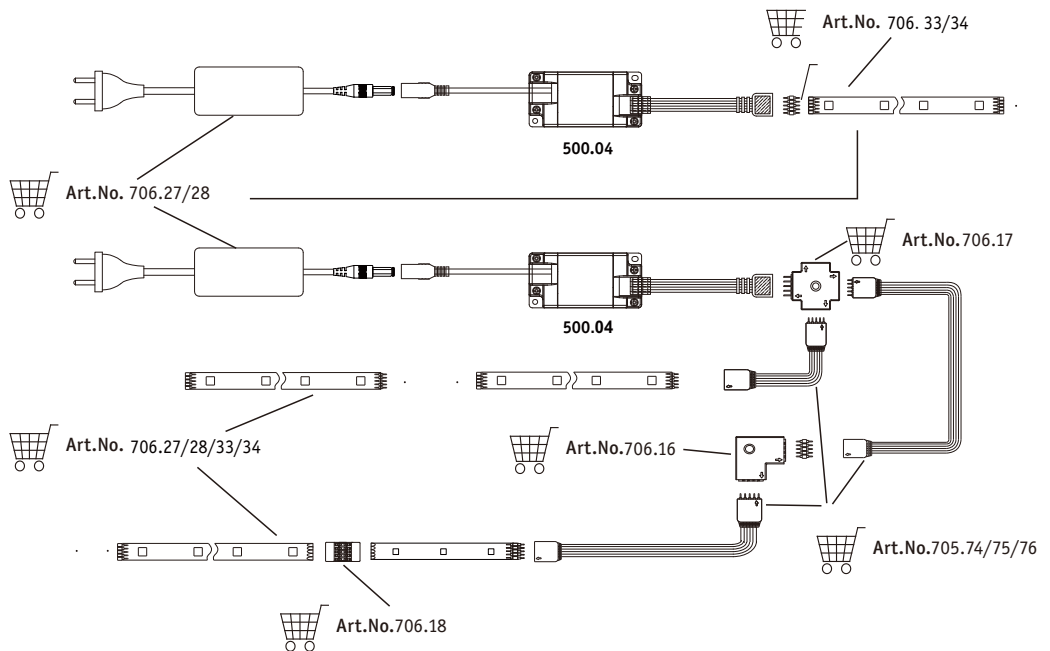
MaxLED 500/MaxLED 1000



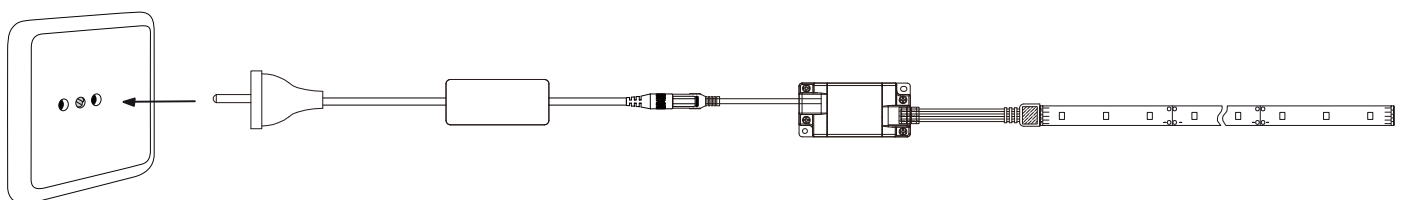
MaxLED Tunable White

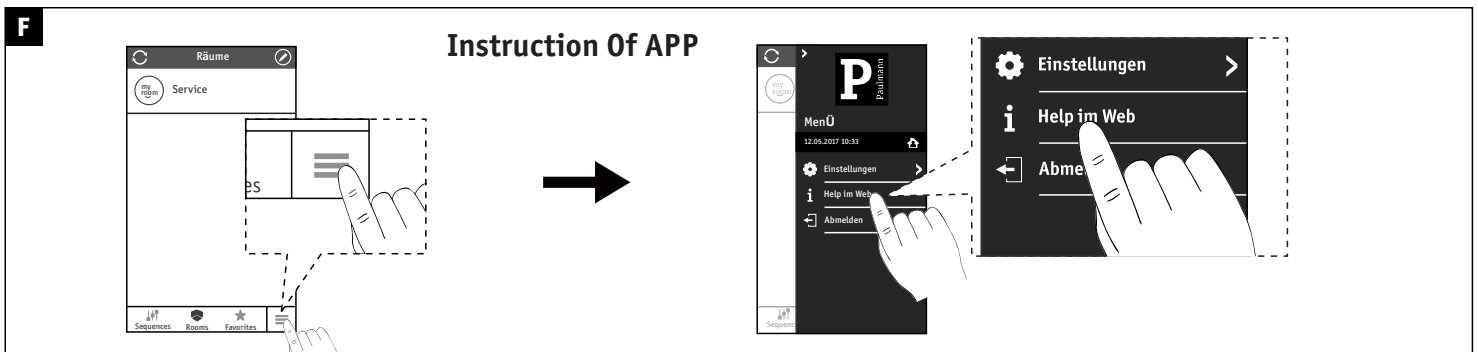
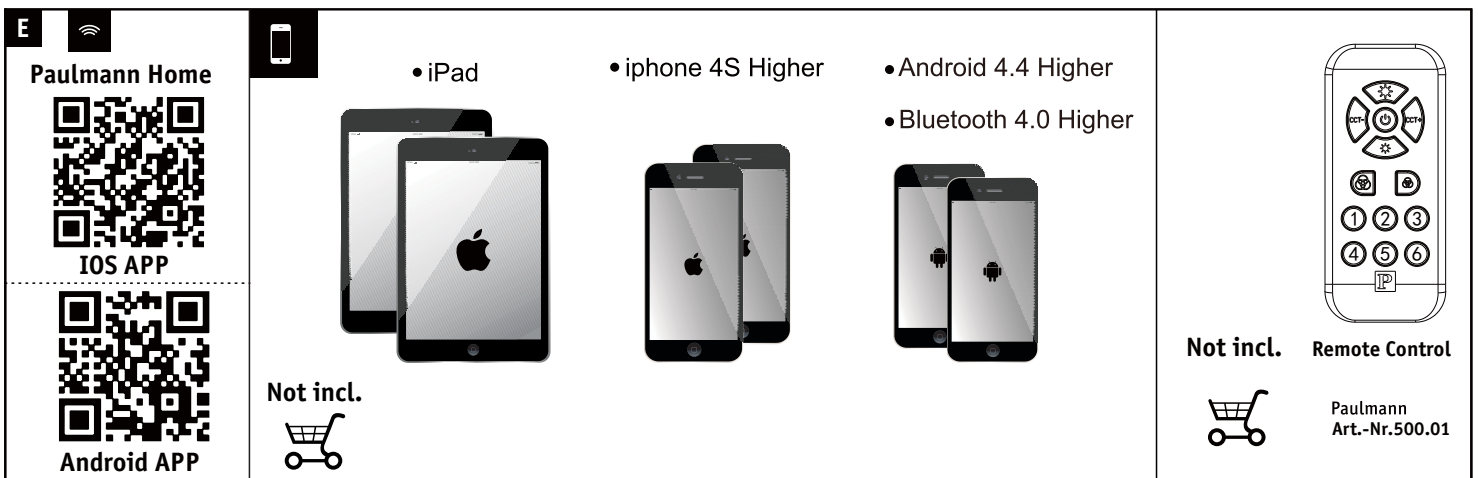
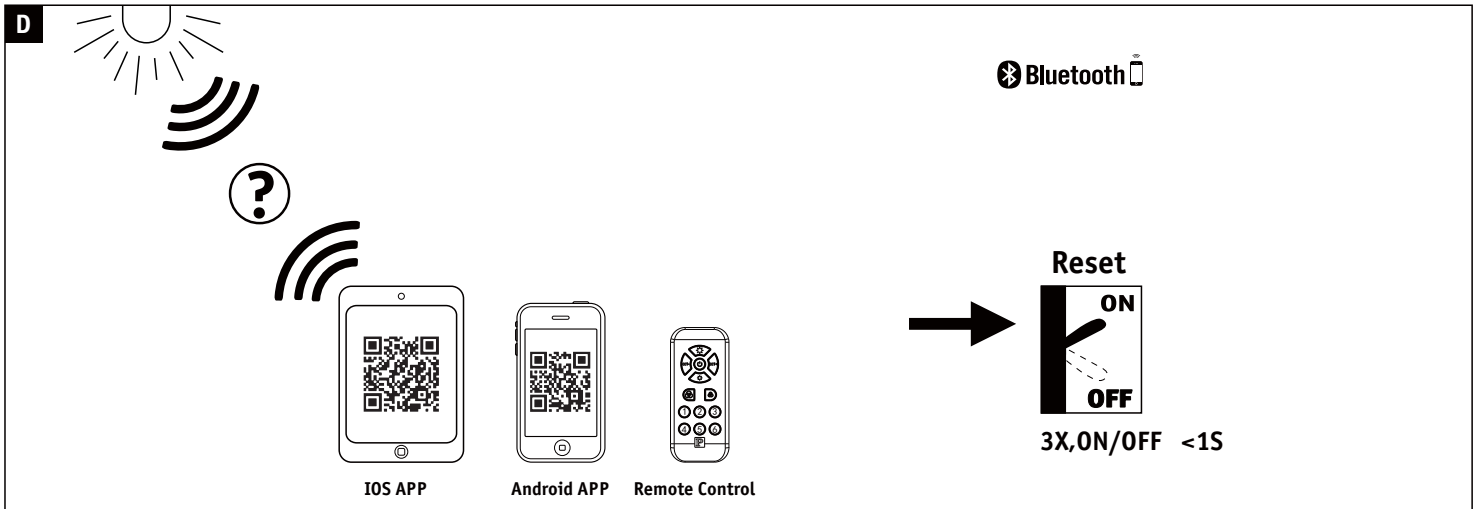
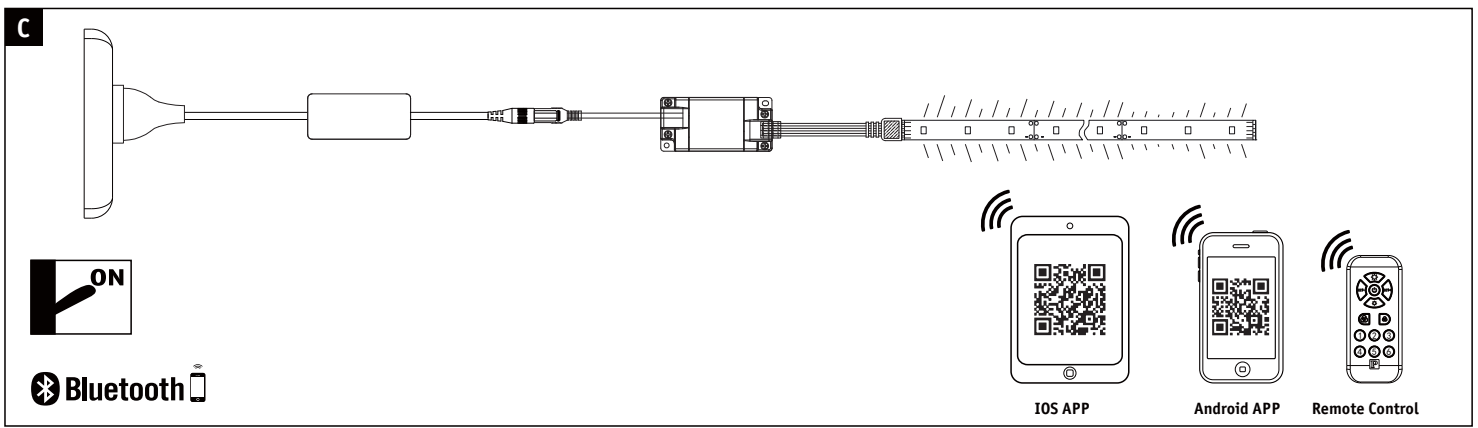


MaxLED RGBW



B





Hiermit erklärt Paulmann Licht, dass der Funkanlagentyp Art.-Nr: 500.04 Richtlinie 2014/53/EU entspricht. Der vollständige Text der EU-Konformitätserklärung ist unter der folgenden Internetadresse verfügbar: [www.paulmann.de](http://www.paulmann.de)

Zugelassen für den Betrieb in allen Ländern der EU / Approved for operating in all European countries

CE: Konform mit / in accordance with / conformément a 2014/30/EU, 2014/53/EU <http://www.paulmann.com/de/de/b2b-haendler-log-in.html>

Funk-Frequenz 2,4 GHz - 2,4835 GHz. Abgestrahlte Energie 10mW



doesn't apply for the geographical area within a radius of 20km from the centre on "Ny Alesund"