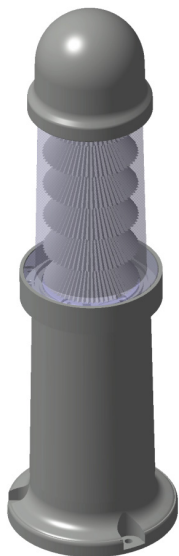
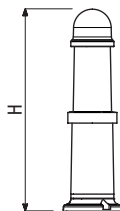


# POINT

# GEWISS



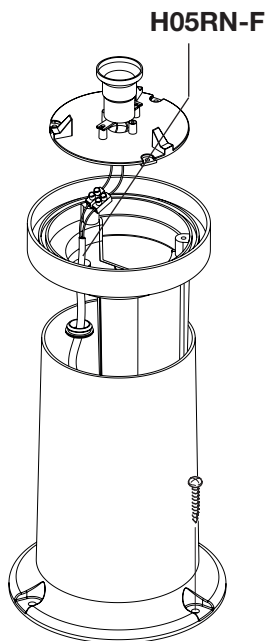
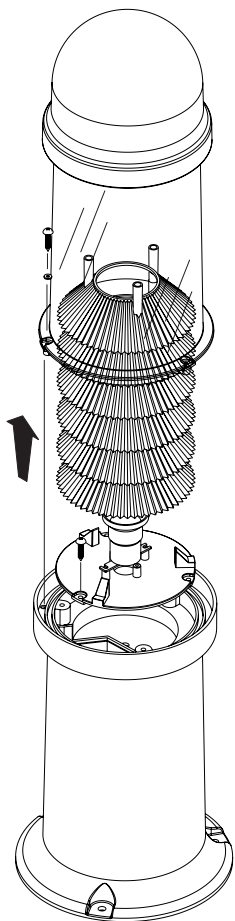
**H473 E14 MAX 5W LED**  
**H550 E27 MAX 12W LED**

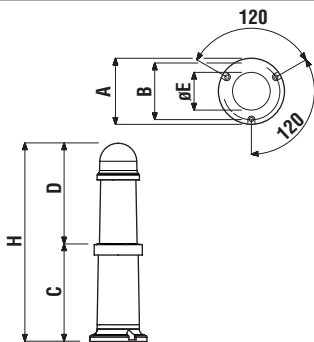
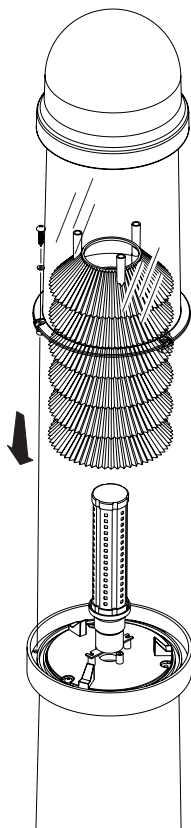
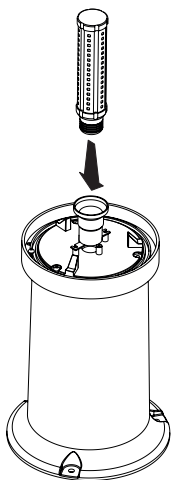


CE IP55

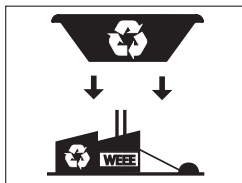
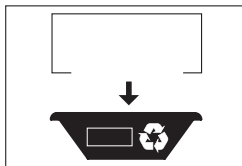
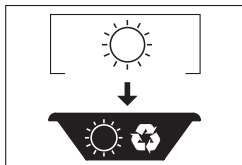
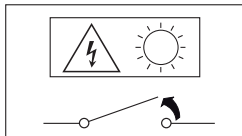


$t_a +25^{\circ}\text{C}$





⊗	A	B	C	D	øE	H	Kg
E14 MAX 5W LED MAX Ø=25mm MAX L=140mm	137	117	230	243	90	473	0,920
E27 MAX 12W LED MAX Ø=40mm MAX L=160mm	184	160	267	283	130	550	1,490



Punto di contatto indicato in adempimento ai fini delle direttive e regolamenti UE applicabili:  
Contact details according to the relevant European Directives and Regulations:

GEWISS S.p.A. Via A.Volta, 1 IT-24069 Cenate Sotto (BG) Italy Tel: +39 035 946 111 E-mail: [qualitymarks@gewiss.com](mailto:qualitymarks@gewiss.com)

SAT



+39 035 946 111  
8.30 - 12.30 / 14.00 - 18.00  
lunedì + venerdì - monday + friday



+39 035 946 260



[sat@gewiss.com](mailto:sat@gewiss.com)  
[www.gewiss.com](http://www.gewiss.com)