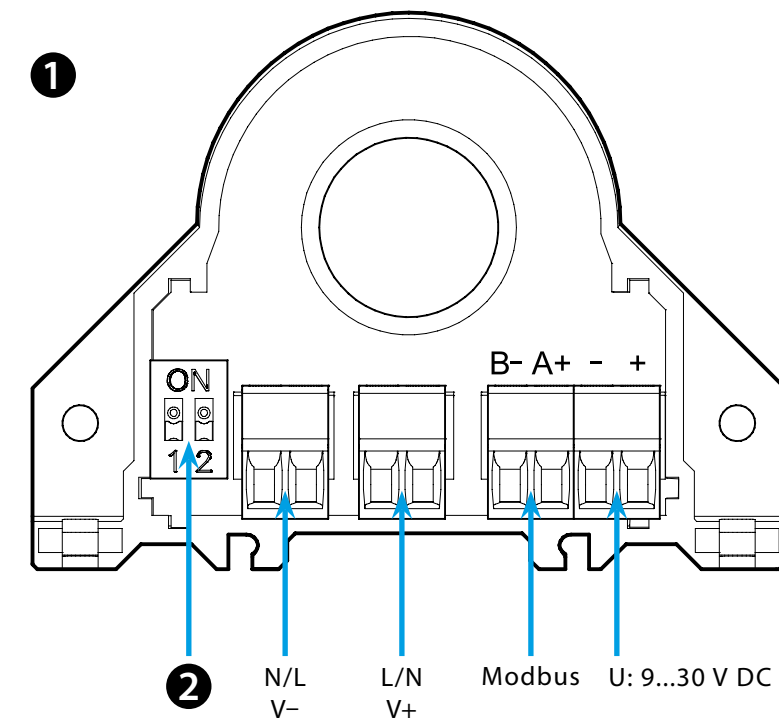




6M.Tx

6M.Tx.9.024.1200			
TRMS AC or DC MODBUS POWER MONITOR	6M.TA	6M.TB	6M.TF
I _{max} / U _{max} AC	50/800	100/800	300/800
I _{max} / U _{max} DC	50/1000	100/1000	400/1000
U DC	9... 24 (U _N)...30		
Modbus RS485	1200...115200 baud, 8, N, 1		
T (-15...+65)°C			
IP 20			

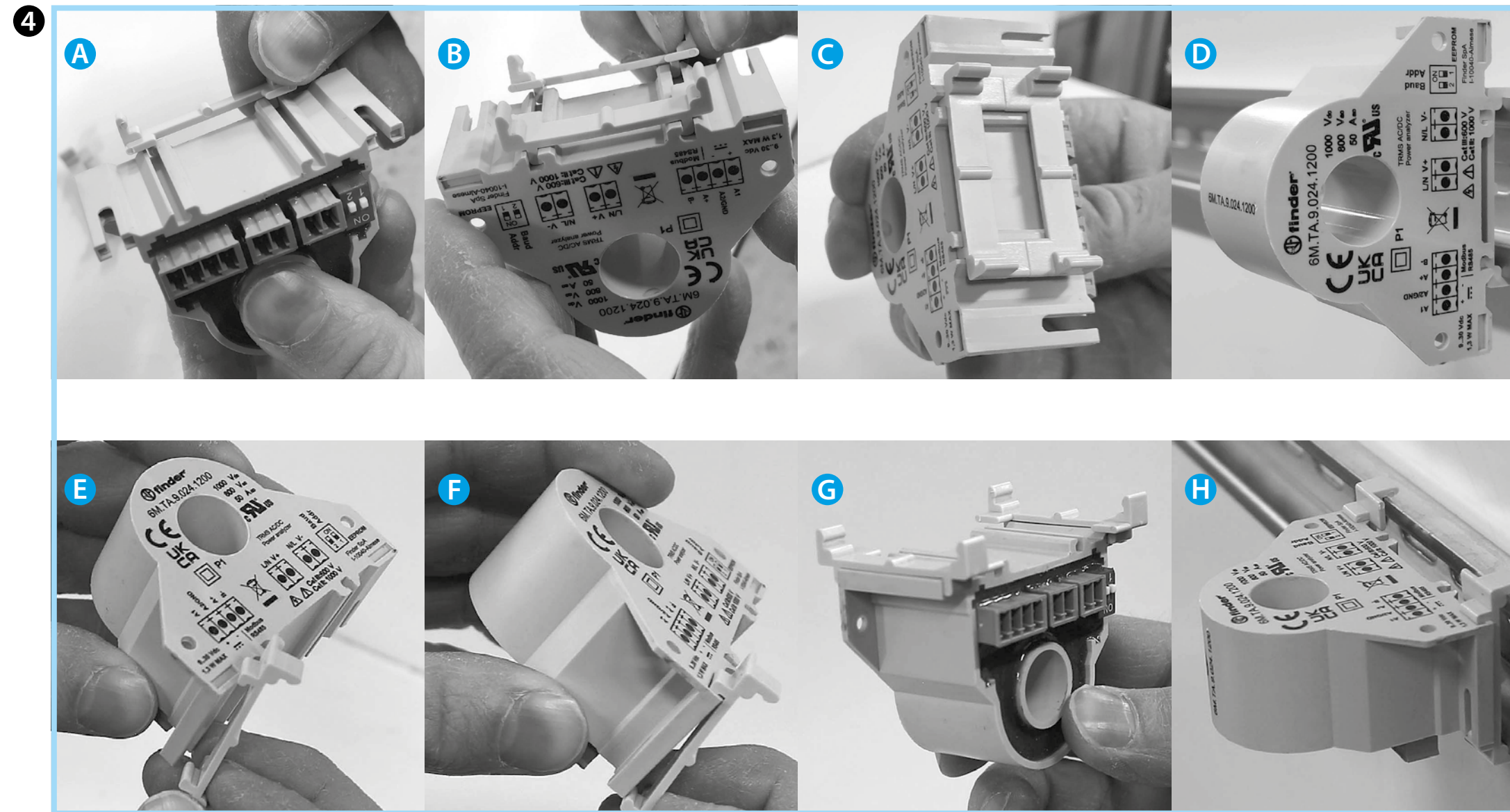
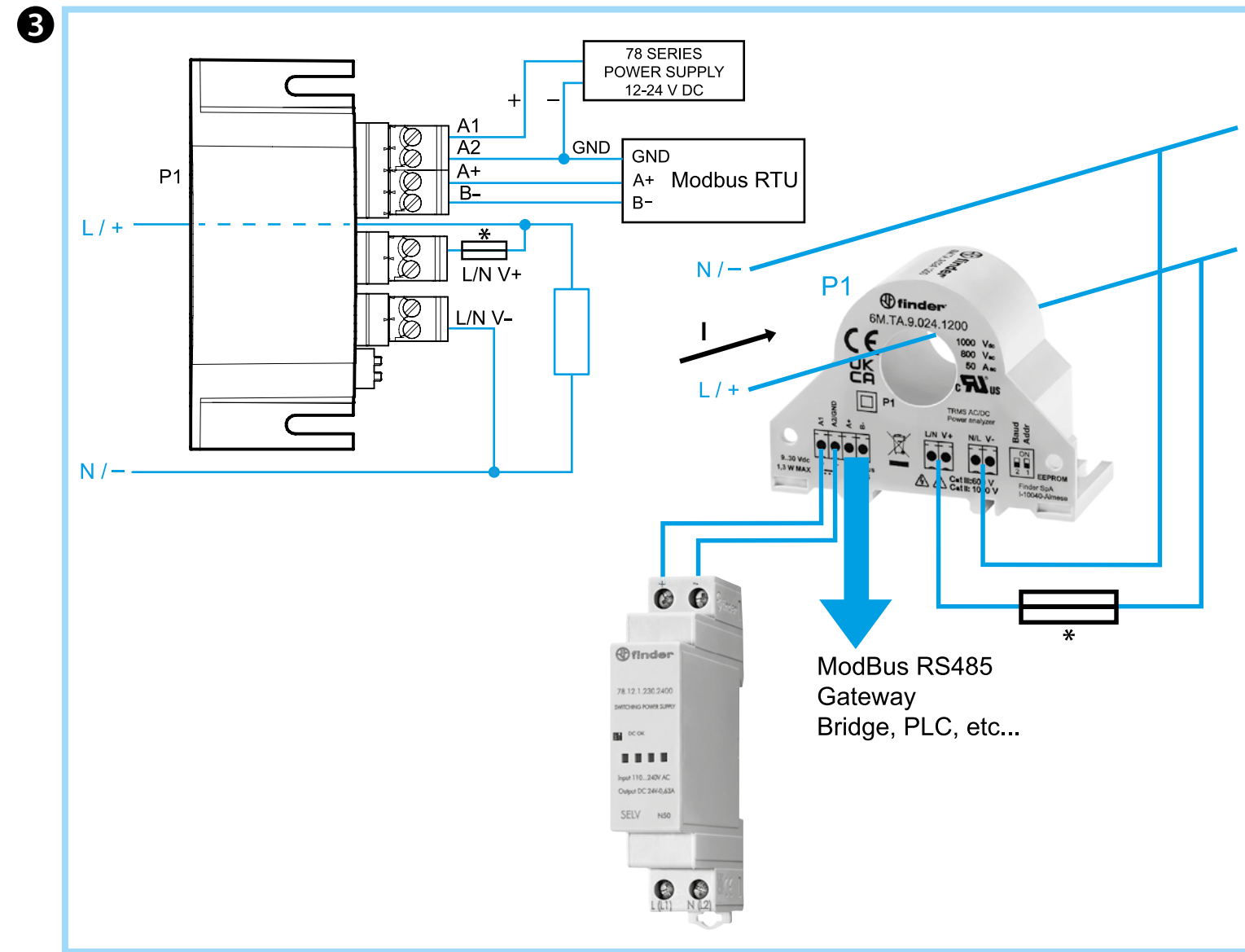


Utility Model - IB6MTXVXX - 03/23 - Finder S.p.A. con unico socio - 10040 ALMESE (TO) - ITALY

2

Default
 Address: 1
 Baud: 9600
 Modbus RS485

Address: 1
 Baud: 38400
 Modbus RS485



6M.Tx.9.024.1200 ANALYSEUR DE RÉSEAU MONOPHASE AVEC PROTOCOLE MODBUS RS485

- 1 CONNEXIONS
 - 2 RÉGLAGE / PROGRAMMATION
* Configuration utilisateur enregistrée sur mémoire interne (EEPROM)
 - 3 SCHEMA DE RACCORDEMENT
* 100 mA - Type slow
 - 4 MONTAGE SUR RAIL
A - B - C - D Vertical
E - F - G - H Horizontal
- NOTE
Manuel d'utilisation complet sur le site Findernet.com
-