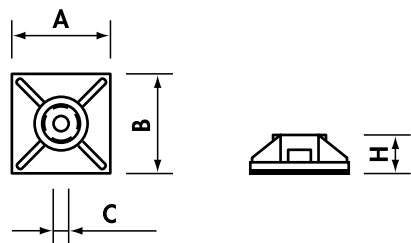


## ACCESSORIES FOR CABLE TIES PA6.6 Polyamide

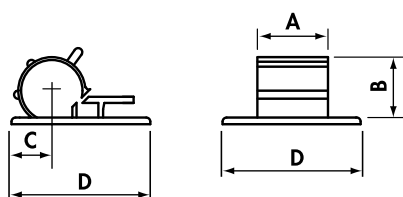
**Attention: Acrylic adhesive; to obtain the best result wait at least 6 - 8 hours before applying the load.**



### Self adhesive cable tie bases in PA6.6

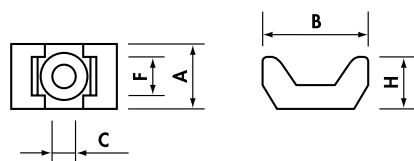
Type	Max Tie (mm)	A (mm)	B (mm)	C (mm)	H (mm)	Fixing screw hole Ø (mm)	Quantity
AB 13*	2,8	13,0	13,0	3,2	3,2	-	100
AB 19*	3,6	19,0	19,0	4,0	4,4	3,1	100
AB 28*	4,8	28,0	28,0	5,3	5,7	5,5	100

\*Add to Ref: N for Black



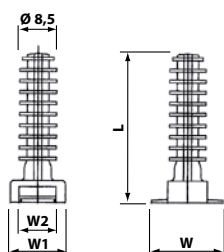
### Self adhesive cable clips in PA6.6

Type	Cable Ø (mm)	A (mm)	B (mm)	C (mm)	D (mm)	Quantity
CC 8.9	8-9	9,0	12,0	8,0	21,5	100
CC 9.12	9-12	12,0	15,0	8,2	21,5	100



### Cable tie saddle clamps in PA6.6

Type	Max Tie (mm)	A (mm)	B (mm)	C (mm)	F (mm)	H (mm)	Quantity
SS 4.8-3.7	4,8	9,5	15	3,7	5,0	7,2	100
SS 4.8-4.5	4,8	9,5	15	4,5	5,0	7,2	100
SS 9-4.5	9	16,0	22	4,5	9,2	9,7	100
SS 9-5	9	16,0	22	5,0	9,2	9,7	100
SS 9-6.4	9	16,0	22	6,4	9,2	9,7	100



### Stud fixing for cable ties in PA6.6

Type	W (mm)	W1 (mm)	W2 (mm)	L (mm)	Fixing hole Ø (mm)	Quantity
GH8	20	15	10	40,5	8	100

Push into Ø 8 mm hole.  
Cable tie inserted through slot in head.

#### Main features:

Material: POLIAMYDE PA6.6

- Self extinguishing cl.V2 (UL 94)
- Humidity absorption: 2,5% (at 50% of relative humidity)
- Working temperature: -40°C to +85°C (continuous)  
-40°C to +120°C (short periods)
- Resistance to external agents: oils, bases, greases, oil products, chlorinated solvents
- Colour: Natural or Black (Ral 9005)

#### Cembre SpA

Via Serenissima, 9 - 25135 Brescia (Italy)

Tel.: +39 030 36921 - Fax: +39 030 3365766

Web: [www.cembre.com](http://www.cembre.com) - Email: [info@cembre.com](mailto:info@cembre.com)