



ERX 2000



Important product information (1 2 4)

www.deltadore.com



	230 V~, 50 Hz 1 VA		54 x 140 x 25 mm
	16 max.	IP	IP 44
	2 max.	CE	R&TTE 1999/5/CE
	868 MHz (EN 300 220) 100 m	°C Stockage / Storage	-10°C / +70°C
		°C Utilisation / Use	-20°C / +60°C

Outdoor

1

230V~
50 Hz

4

3

5

ERX 2000 N°1



ON

230V~
50 Hz

1

>3s

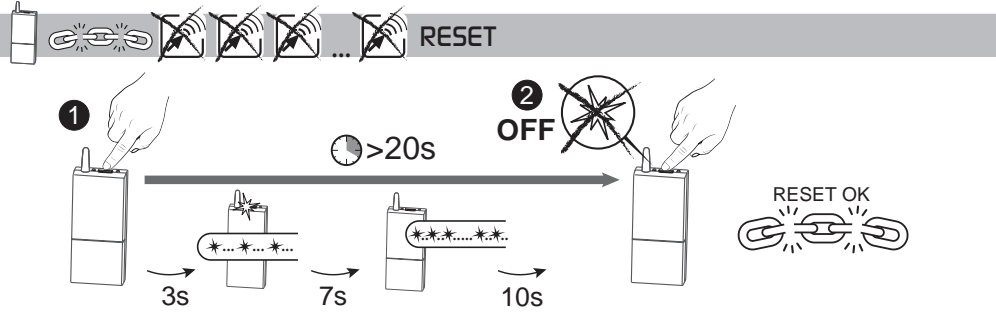
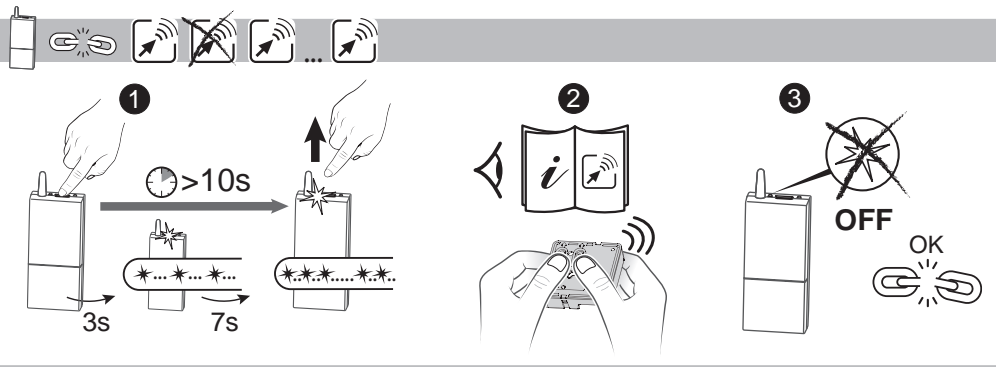
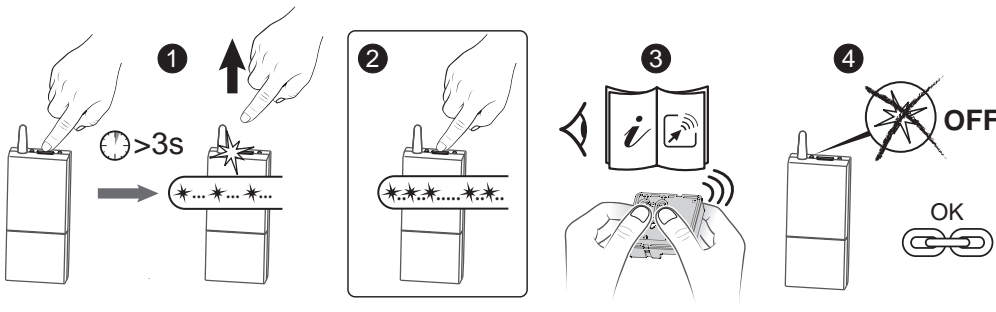
2

3


OFF


OK


ERX 2000 N°2




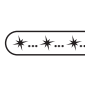
 Récepteur / Receiver / Receptor / Receptor / Ricevitore / Empfänger / Odbiornik / Ontvanger / Přijímač / Mottagare / Modtager / Mottaker / Vastaanotin / 接收器 /


 Émetteur / Transmitter / Emisor / Emissor / Emittitore / Sender / Nadajnik / Zender / Vysílač / Sändare / Transmitter / Sender / Lähetin / 发射器 /

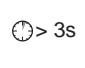
 Association / Association / Asociación / Associação / Associação / Associazione / Verbinding / Przpisanie / Verbinding / Přřazení / Associering / Tilknynning / Forbindelse / KytKentä / 连接 /


 Suppression d'une association / Delete one association / Borrar asociación / Eliminar associação / Eliminare le associazioni / Verbinding iöschten / Usunięcie przypisania / Een verbinding opheffen / Zrušit přřazení / Ta bort associationerna / Sletning af en tilknynning / Slette en Forbindelse / Poista kytKentä / 删除一个连接 /

 Reset total / Total reset / Reset total / Reincialização total / Reset totale / Reset / Reset calkowitz / Totale reset / Celkový reset / Total återställning / Total nultstilling / Total nultstilling / Nollaa kaikki / 完全初始化设置 /

 Clignotement lent / Slow flashing / Parpadeo lento / Intermitência lenta / Lamppeggiamento lento / Langsames blinken / Wolne miganie / Langzaam knipperen / Pomale blikání / Blinking lingsam / Langsomme blink / Langsomme blink / Hidas vilkunta / 缓慢的闪烁 /

 Clignotement rapide / Fast flashing / Parpadeo rápido / Intermitência rápida / Lamppeggiamento rapido / Schmelles blinken / Szybkie miganie / Snel knipperen / Rychlé blikání / Snabb blinkningar / Hurtige blink / Raske blink / Nopea vilkunta / 快速的闪烁 /

 Temps d'appui / Press time / Tiempo de pulsación / Tempo de pressão / Tempo pressione / Tastendruckdauer / Czas naciskania / Drukittj / Doba stisknutí / Kopplingstid / Tid Nedtrykning / Trykkesidd / Painallisaika / 按键时间 /

 Voyant éteint / LED off / Testigo apagado / Indicador apagado / Spia spenta / Kontrollleuchte aus / Lamka gašnie / Controllelampe uit / LED nesviti / Lampan släcks / Kontrolllampe slukket / Lysdiode slukket / Merkkivalo palaa / 指示灯熄灭 /