



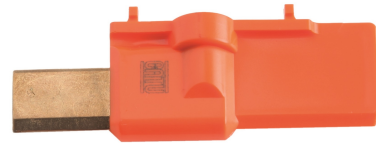
Date de la dernière modification
09/11/2023

MC-296-115/08

Set of 4 dummy fuses. Size 115 mm.
Connection M8.

Series: MC-296-...

Network Application: LV



Application :	Tapping	M8
	Fonctionnalité	
	Weight	0.23
	Short Circuit Rating	4
	Tension	
• Dummy fuses type connectors for MALT/CC equipment adapted to LV switchboards.	Operating Voltage AC	1000 V
	Operating Voltage DC	1500 V
• Icc: 4 kA/1s.		

Features :

- Copper/aluminium blade.
- Insulation in reinforced thermoplastic, orange colour.
- M8 or M12 fixing hole for connection.
- Operation with **MC-161** or **MC-296-M**.
- Set of 4.