

BTAL41DD
Neige
PRISE TELEVISION

ALTEGE™

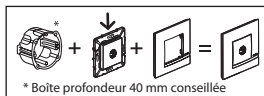
bticino

legrand®

Pro & Consumer Service
BP 30076 - 87002 LIMOGES CEDEX FRANCE
www.legrand.fr

Design & Quality by LEGRAND (France)

Pour fiche type "F" à visser
Compatible qualité UHD (4K)
Blindage Classe A (4G protégé)
Atténuation < 1 dB



* Boîte profondeur 40 mm conseillée



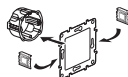
Satellite



Fixation
à vis

Griffes vendues séparément (Réf. BTAL0001)*

* En rénovation : pour fixation du mécanisme dans une boîte sans vis



CONSIGNE POUVANT VARIER LOCALEMENT > WWW.CONSIGNESDETRI.FR

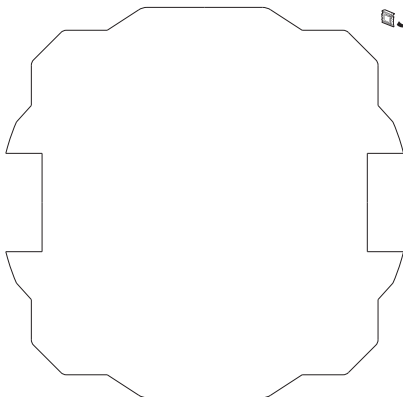



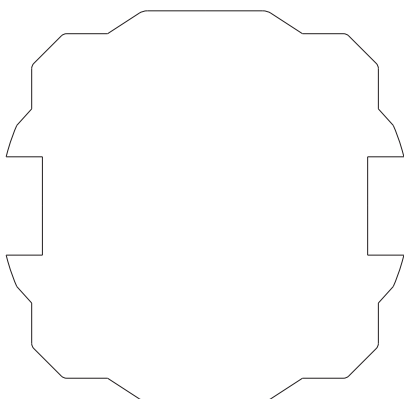
Schéma de câblage
à l'intérieur

Made in France

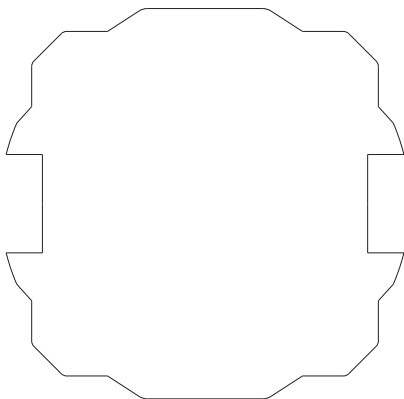
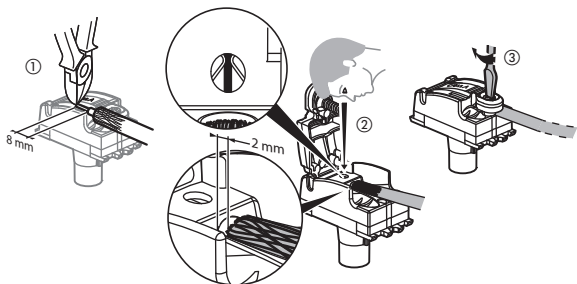
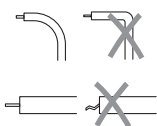
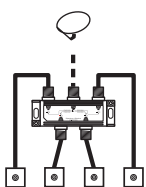
2 ans
GARANTIE



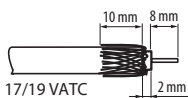
 Respecter strictement les conditions d'installation et d'utilisation.



LE10007AA



Utiliser un câble coaxial
Ø 5,5 à 7 mm - 75Ω



17/19 VATC