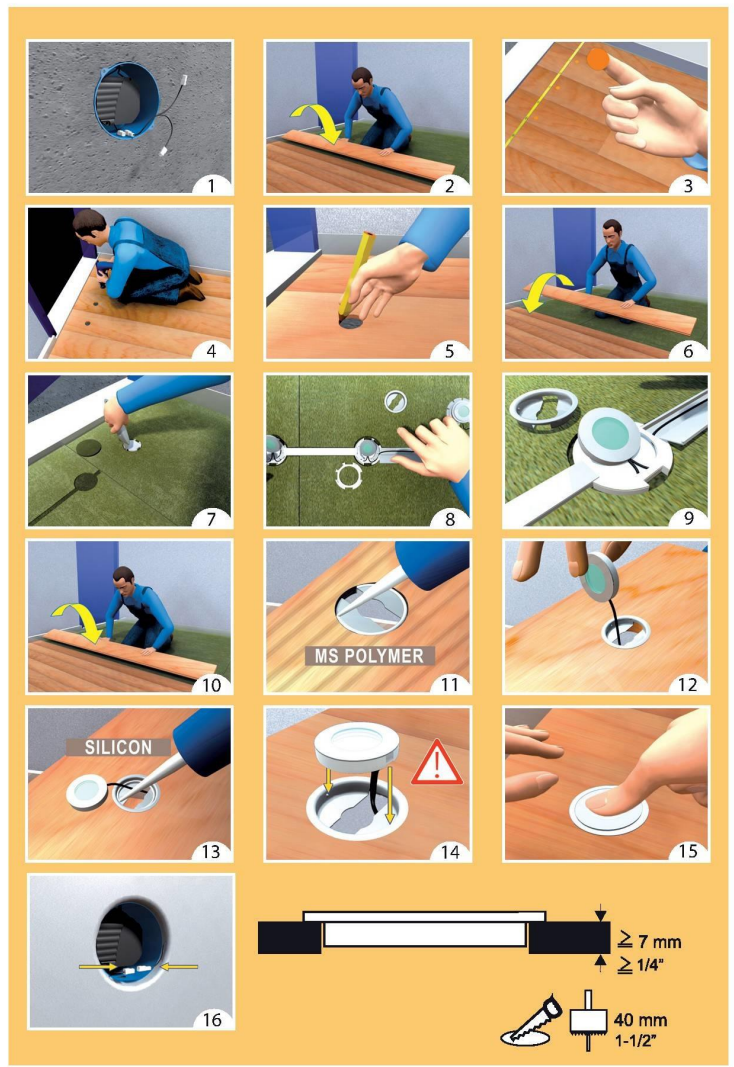
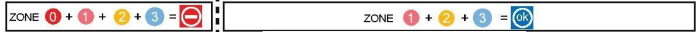
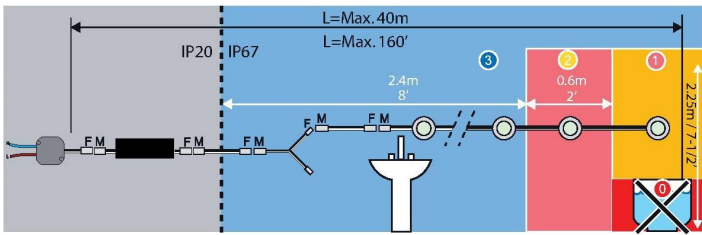
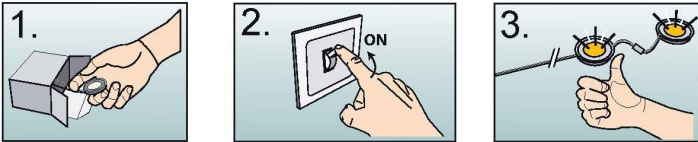




Eyeleds ColorEYE

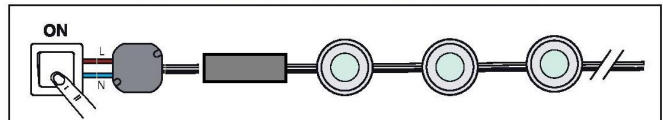


Test First

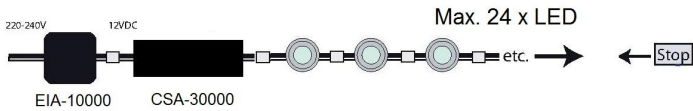
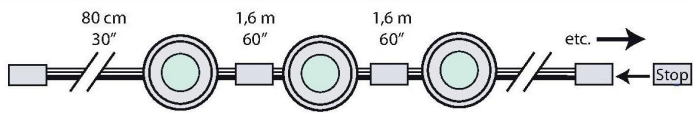


LED Driver AZ780001U		Max 90°C / 194°F		

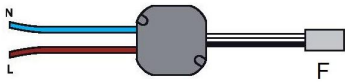
SWITCHING ON 220-240V AC SIDE ONLY



Multi/Linkable Configuration



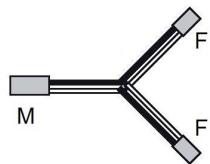
Accessories



EIA-10000 / AZ090001U
 Recessed Driver
 Input 220-240V AC
 Output 12V DC - 12W Max.



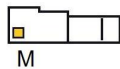
CSA-30000 / 00BG0UBL0002
 RGB Sequencer Box
 Input 10-14V DC
 Output 10V DC



EIA-20000 / AZ180001U
 T-Splitter
 12cm

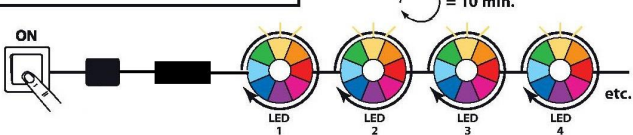


EIA-30004 / AZ150001U
 Extension Cable 600cm
 EIA-30003 / 3240410U00202
 Extension Cable 300cm
 EIA-30002 / 3240400U00202
 Extension Cable 100cm

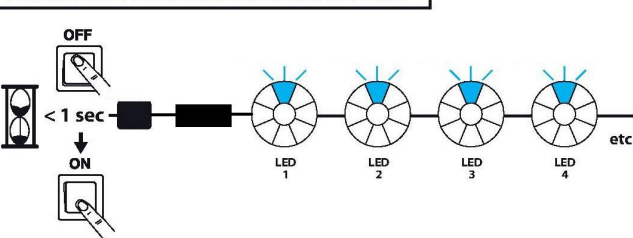


EIA-40000 / 3240310U00102
 End Stop IP67

PROGRAM 1: COLOR CHANGE



PROGRAM 2: COLOR STOP/COLOR CHANGE



Modes of operation

The system functions in one of two modes: ColorCycle or ColorFix.

ColorCycle Mode: The Controller cycles through a factory programmed range of colors. The cycle completes after 10 minutes. The cycle is then restarted. During the cycle the color of the LED units slowly change color. The color sequence is Blue, Magenta, Red, Yellow, White, Yellow, Green, Cyan, Blue.

ColorFix Mode: The Controller sends out a previously selected color continuously.

Power-up mode

After applying voltage to the Controller the system starts in the previously selected mode. If ColorCycle Mode was selected the Controller starts the color cycle from the beginning (e.g. starting with blue color).

Mode selection

Changing mode is accomplished by disconnecting the input voltage from the Controller for less than 1 second. If the controller detects such a power-fail it will show this by:

Flashing LED units twice in white color when ColorCycle Mode selected.
 Flashing LED units once in white color when ColorFix Mode selected.

The color used in ColorFix Mode is the color shown in ColorCycle Mode at the moment the mode is changed. Changing Mode to ColorCycle Mode will continue the color where it left when the ColorCycle Mode was changed to ColorFix Mode.

