

Mini Camera Instruction



Features

- Use Sony high sensitive interline transfer CCD sensor.
- Digital Signal Processing (DSP)
- 0.3 Lux/F2.0, day & night function
- AGC, AWB
- BLC function
- Square structure, easy to install
- Board Lens or Pinhole lens optional
- Exquisite design for circuit and structure. incorporates high technology
- Aluminium, Solidity
- Cabinet bulk, apply in concealing place specially

Specifications

Model	SC-MC1244
Image Sensor	1/3" Sony Super HAD CCD
Signal system	PAL or NTSC Color system
Effective Pixels	PAL:752(H)×582(V) NTSC:768(H)×494(V)
Resolution	520 TV Lines
Minimum Illumination	0.3Lux/F2.0, day & night function
S/N Ratio	More than 50dB
Electronic Shutter	1/50 ~ 1/100,000sec(PAL) 1/60 ~ 1/100,000sec(NTSC)
AWB	Automatical
AGC	Automatical
BLC	Automatical
Gamma Correction	0.45
Sync mode	INT
Lens	Pinhole Lens: 3.7
Video Output	1.0Vpp, 75Ω, sync negative polarity
Power Supply	12VDC
Consumed Current	120mA (MAX)
Operating Temperature	-10 ~ +50°C: RH95%MAX
Body	Aluminium
Dimension	36(H)×36(H)×27(D)mm
Weight	50 g

All data and specifications subject to change without notice.

I

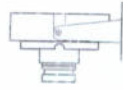
Caution



- Do not disassemble or remodel the camera to avoid possible fire, electric shock or other hazard. Please refer qualified servicing technician for the malfunction.
- Never place the camera in the humidity & dust. Set a housing when placing it outdoor.
- Carefully install the camera. Do not scratch the camera unit, especially lens glass.
- Avoid Shock, vibration. Do not install camera on an unstable surface. It can be damaged by improper use or stre.
- Never face the camera towards the direct sunlight or other bright objects no matter it powers on or not in order to avoid dim image or smear.
- Use the camera within given temperature, humidity, and electricity limit.
- Stop using the camera when you find malfunction like smoke or unusual heat, and try to contact the agent.



Front view



Side view

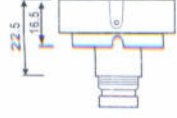
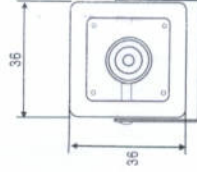


Rear View

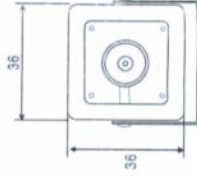
III

Dimension Outlet

Board Lens Square shape



Pinhole lens Square shape



IV