

Odace - Connected Wireless Switch 1-gang/ 2-gang

Device user guide

Information about features and functionality of the device.

01/2023

Legal Information

The Schneider Electric brand and any trademarks of Schneider Electric SE and its subsidiaries referred to in this guide are the property of Schneider Electric SE or its subsidiaries. All other brands may be trademarks of their respective owners.

This guide and its content are protected under applicable copyright laws and furnished for informational use only. No part of this guide may be reproduced or transmitted in any form or by any means (electronic, mechanical, photocopying, recording, or otherwise), for any purpose, without the prior written permission of Schneider Electric.

Schneider Electric does not grant any right or license for commercial use of the guide or its content, except for a non-exclusive and personal license to consult it on an "as is" basis. Schneider Electric products and equipment should be installed, operated, serviced, and maintained only by qualified personnel.

As standards, specifications, and designs change from time to time, information contained in this guide may be subject to change without notice.

To the extent permitted by applicable law, no responsibility or liability is assumed by Schneider Electric and its subsidiaries for any errors or omissions in the informational content of this material or consequences arising out of or resulting from the use of the information contained herein.

Table of Contents

Safety information	4
Odace - Connected Wireless Switch 1-gang/2-gang	5
For your safety	5
About the device	6
Installing the device	6
Quick Home Connect	7
About Quick Home Connect	7
Switching from 1-gang to 2-gang operation	7
Pairing the device in Quick Home Connect	8
Using the Wireless switch in Quick Home Connect	13
Resetting the device in Quick Home Connect	15
LED indications in Quick Home Connect	15
Troubleshooting in Quick Home Connect	15
Pairing the device with Wiser Hub	15
Configuring the device	17
Setting the device location in the room	17
Renaming the device	18
Identifying the device	19
Removing the device from the system	20
Resetting the device	21
Using the device	21
Switching operation	21
Assigning an Action to the Wireless Switch	22
Assigning a Moment to the Wireless Switch	24
Removing configured Action/Moment	25
Replacing the battery	26
LED indications	26
Troubleshooting	27
Technical Data	27
Compliance	28
Compliance information for Green Premium products	28
Trademarks	28

Safety information

Important information

Read these instructions carefully and look at the equipment to become familiar with the device before trying to install, operate, service, or maintain it. The following special messages may appear throughout this manual or on the equipment to warn of potential hazards or to call attention to information that clarifies or simplifies a procedure.



The addition of either symbol to a “Danger” or “Warning” safety label indicates that an electrical hazard exists which will result in personal injury if the instructions are not followed.



This is the safety alert symbol. It is used to alert you to potential personal injury hazards. Obey all safety messages that accompany this symbol to avoid possible injury or death.

DANGER

DANGER indicates a hazardous situation which, if not avoided, **will result in** death or serious injury.

Failure to follow these instructions will result in death or serious injury.

WARNING

WARNING indicates a hazardous situation which, if not avoided, **could result in** death or serious injury.

CAUTION

CAUTION indicates a hazardous situation which, if not avoided, **could result in** minor or moderate injury.

NOTICE

NOTICE is used to address practices not related to physical injury.

Odace - Connected Wireless Switch 1-gang/2-gang



S5x0531

For your safety

⚠ DANGER

HAZARD OF ELECTRIC SHOCK, EXPLOSION, OR ARC FLASH

While installing the device on a wall box or an existing switch outlet combination, always isolate the 230 V AC cables by applying an adhesive silver foil on the fixing plate.

Failure to follow these instructions will result in death or serious injury.

About the device

The Connected Wireless Switch 1-gang/2-gang (hereinafter referred to as **Wireless Switch**) is a battery-powered wireless switch that is used to control a group of Zigbee devices (such as light/shutter) within the same Zigbee network.

The Wireless Switch can be configured through the Wiser Home app.

Advantage of using a Wireless Switch:

- Easy to use and user-friendly interface: also good for children (placed lower on the wall) and for the elderly who may not be so familiar with smart phones.
- Easy to mount on the wall: no wiring required.

Features of a Wireless Switch:

- Using the app, you can add various Actions (such as lighting/shutter control) to the Wireless Switch.
- Using the app, you can add moments to the Wireless Switch (such as Movie Night Moment/Good Night Moment).
- Low battery notification in the app.

Installing the device

Refer to the installation instruction supplied with this product.

Quick Home Connect

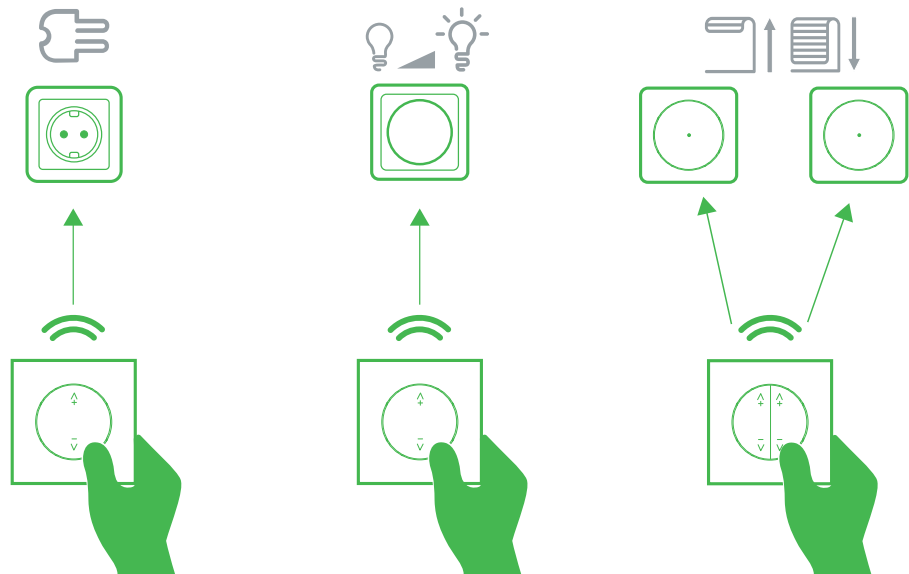
About Quick Home Connect

Quick Home Connect is your starting point for wireless home automation. It performs functions like switching, dimming and shutter control using a Connected Wireless Switch (hereinafter referred to as Wireless switch) via a Zigbee network.

IMPORTANT: Applicable only for products sold as a part of Quick Home Connect kits.

Quick Home Connect is a wireless connectivity solution for Zigbee devices without the need for a Hub or smartphone application.

The **Wireless switch** is a battery-powered wireless push-button switch that is used to control Zigbee devices (such as light or shutter) within the same Zigbee network.



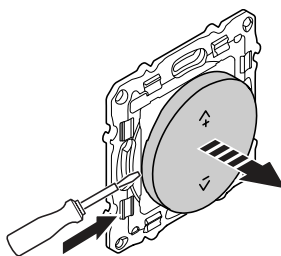
Supported devices

- Connected Universal Rotary Dimmer (Rotary dimmer)
- Connected Blind Control Switch (Blind control)
- Connected Single Socket Outlet (Socket outlet)

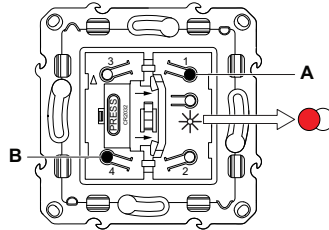
Switching from 1-gang to 2-gang operation

By default, the Wireless switch is operated as a 1-gang device. It can be configured to 2-gang operation.

1. Remove the 1-gang rocker.



- Press and hold the push-buttons (A and B) for at least 10 seconds.
The status LED blinks red indicating that the 2-gang operation is set.



- Assemble the 2-gang rockers.

NOTE: To revert 1-gang operation, reset the Wireless switch to factory default mode. For more information refer to resetting the device, page 21.

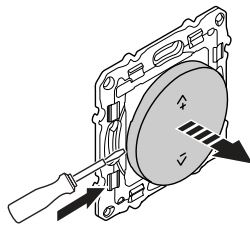
Pairing the device in Quick Home Connect

The Wireless switch can be paired with the supported devices in the list. Refer to Supported devices, page 7.

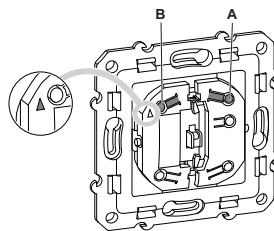
Preparing the devices:

It is necessary to prepare the devices before pairing. On certain devices the status LED is not directly visible.

- Remove the rocker of the Wireless switch.

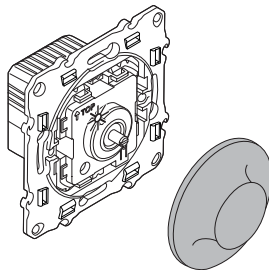


- Make sure the Wireless switch is aligned correctly to identify the pairing buttons.
 - 1-gang wireless switch: Pairing button **(A)**
 - 2-gang wireless switch: Pairing button for the right channel **(A)**
 - 2-gang wireless switch: Pairing button for the left channel **(B)**



NOTE: The Wireless switch is configured for 1-gang operation by default. To switch from 1-gang to 2-gang operation, refer to Switching from 1-gang to 2-gang, page 7.

- Remove the knob of the Rotary dimmer.



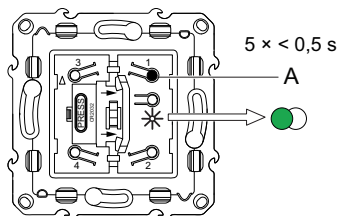
Pairing Wireless switch with Rotary dimmer

To pair the Wireless switch to the Rotary dimmer, you must put the Wireless switch and the Rotary dimmer into pairing mode.

NOTE: The pairing mode will be active for about a minute.

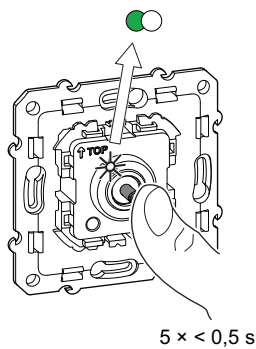
- Short press the push-button (A) 5 times in quick succession on the Wireless switch.

The status LED blinks green.



- Short press the push button of the Rotary dimmer 5 times in quick succession.

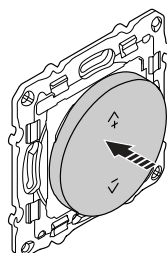
The status LED blinks green.



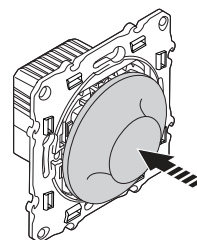
The light connected to the Rotary dimmer blinks for a few times. The status LED stops blinking green on the Wireless switch and the Rotary dimmer. The Rotary dimmer can now be controlled by the Wireless switch.

- Assemble the rocker (A) and rotary knob (B) on the Wireless switch (A) and the Rotary dimmer (B), respectively.

A



B



Pairing Wireless switch with Blind controls

You can pair 2-gang or 1-gang Wireless switch with 2 Blind controls as per your need.

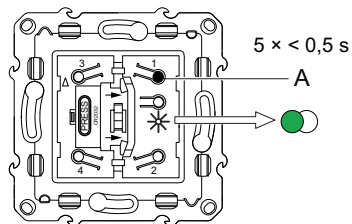
Pairing 2-gang with 2 Blind controls

1. To pair the 2-gang Wireless switch with 2 Blind controls, you must change your Wireless switch to 2-gang operation. Refer to [Switching from 1-gang to 2-gang operation](#), page 7.

NOTE: Do not remove the rocker of the Blind control.

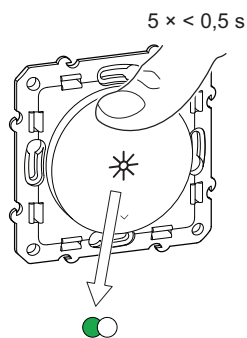
2. Short press the push-button (A) 5 times in quick succession on the Wireless switch.

The status LED blinks green.



3. Short press the first Blind control 5 times in quick succession.

The status LED blinks green.

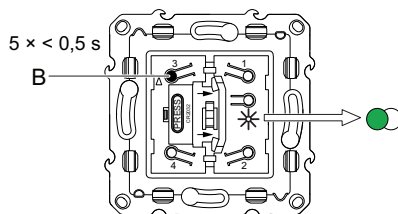


The shutter will move up and down a few times. When successfully paired, the status LED on the Wireless switch and the Blind control turns off.

IMPORTANT: Check if the pairing was successful before you continue with the left channel.

4. Short press the push-button (B) 5 times in quick succession on the Wireless switch.

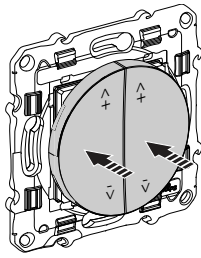
The status LED blinks green.



5. Repeat step 3 on the second Blind control.

The shutter will move up and down a few times. When successfully paired, the status LED on the Wireless switch and the Blind control turns off.

6. Assemble the 2-gang rockers on the Wireless switch.



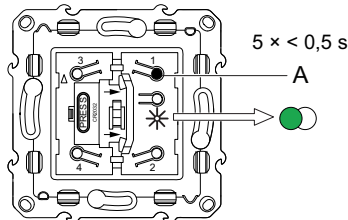
Pairing 1-gang with 2 Blind controls

NOTE:

- Proceed with step 1 if you are pairing the 1-gang Wireless switch with 2 Blind controls for the first time.
- If you wish to change from an existing 2-gang to 1-gang Wireless switch, reset the Wireless switch to factory default mode (1-gang operation) and then proceed with step 1. Refer to [resetting the device](#), page 21.

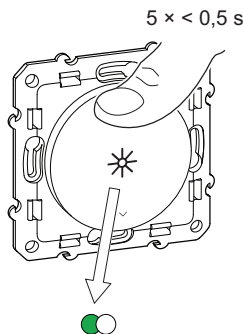
1. Short press the push-button (A) 5 times in quick succession on the Wireless switch.

The status LED blinks green.



2. Short press the first Blind control 5 times in quick succession.

The status LED blinks green.



The shutter will move up and down a few times. When successfully paired, the status LED on the Wireless switch and the Blind control turns off.

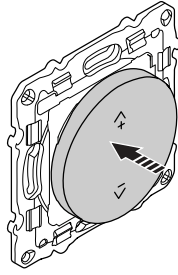
IMPORTANT: Check if the pairing was successful before you continue with the same channel.

3. Repeat step 1.

4. Repeat step 2 on the second Blind control.

The shutter will move up and down a few times. When successfully paired, the status LED on the Wireless switch and the Blind control turns off.

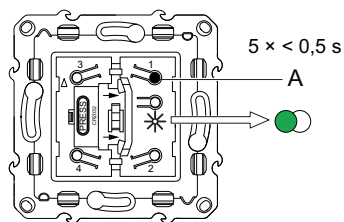
5. Assemble the 1-gang rocker on the Wireless switch.



Pairing Wireless switch with Socket outlet

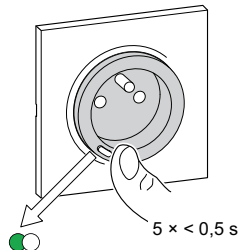
1. Short press the push-button (A) 5 times in quick succession on the Wireless switch.

The status LED blinks green.



2. Short press the push-button of the Socket outlet 5 times in quick succession.

The status LED blinks green.



When successfully paired, the green blinking stops on the Wireless switch and the Socket outlet.

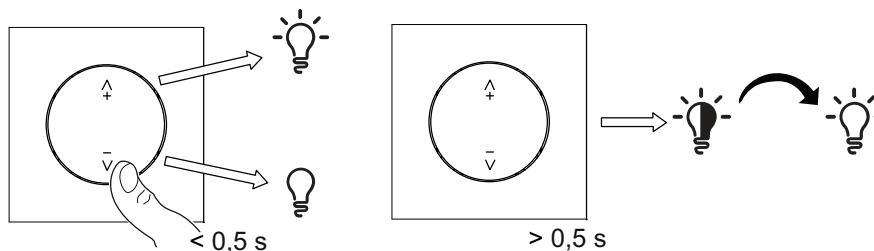
3. Assemble the 1-gang rocker on the Wireless switch.

Using the Wireless switch in Quick Home Connect

Operating a dimmer

You can switch the dimmer on/off or adjust its brightness using the Wireless switch.

- Short press the top ($\wedge+$) or bottom ($\vee-$) Wireless switch ($< 0,5$ s) to turn On or Off the dimmer.
- Long press the top ($\wedge+$) or bottom ($\vee-$) Wireless switch ($> 0,5$ s) to increase or decrease the brightness of the dimmer.



Operating a blind

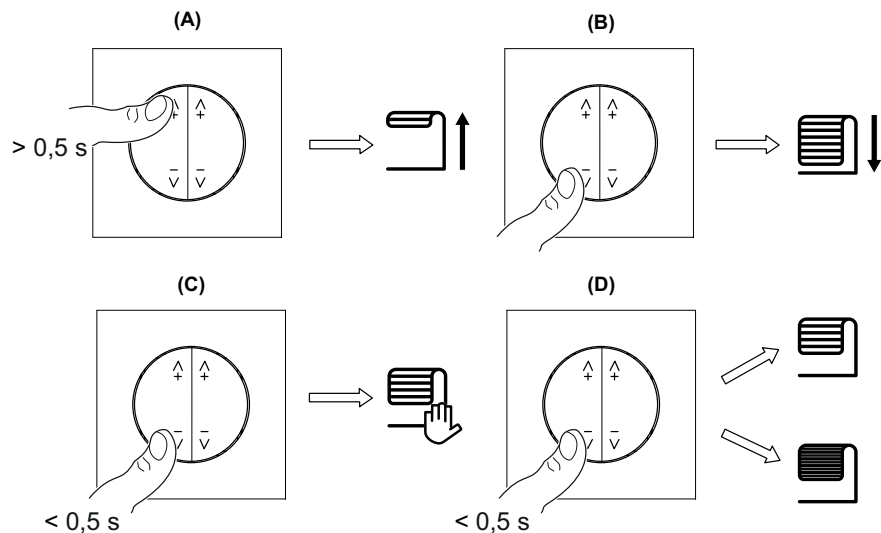
You can operate the blind using the Wireless switch.

Long press the Wireless switch ($> 0,5$ s) to move the blind up or down.

- Press ($\wedge+$) to open the blind (A)
- Press ($\vee-$) to close the blind (B)

Short press top ($\wedge+$) or bottom ($\vee-$) Wireless switch ($< 0,5$ s) to stop the moving blind (C).

Short press top ($\wedge+$) or bottom ($\vee-$) Wireless switch ($< 0,5$ s) to adjust the slat position (D).

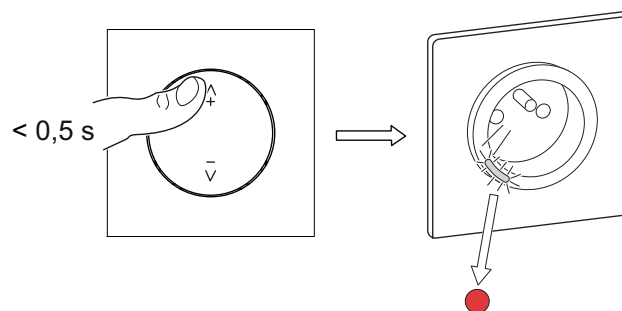


Operating a Socket outlet

You can turn on or off the socket outlet using the Wireless switch.

Short press the top ($\wedge+$) or bottom ($\vee-$) Wireless switch ($< 0,5$ s) to turn on or off the socket.

The LED glows red indicating that the Socket outlet is turned on.



Resetting the device in Quick Home Connect

It is necessary to reset the devices in the following scenarios:



- Unpair the device in Quick Home Connect
 - Refer to [Resetting the Wireless switch](#).
 - Refer to [Resetting the device - Rotary dimmer, Blind control, Socket outlet](#).

When reset is done successfully. The **Wireless switch** and device returns to **factory default**.

- Revert the **Wireless switch** from 2-gang to 1-gang operation.
- **Integrating into Wiser System**
 - If you wish to integrate the devices into Wiser System, reset all the devices in Quick Home Connect and refer to [Pairing the device with Wiser Hub](#), page 15 .

LED indications in Quick Home Connect

Pairing the device in Quick Home Connect

User Action	LED Indication	Status
Press the push button 5 times in quick succession.	LED blinks green, once per second. 	Pairing mode is active for 60 seconds. When pairing is completed, LED stops blinking. 

Troubleshooting in Quick Home Connect

Symptom	Possible cause	Solution
LED displays amber in Rotary dimmer or Blind control or Socket outlet.	Pairing not completed and returned to factory reset.	Pair the Wireless switch and the device again. Refer to Pairing the device in Quick Home Connect , page 8 .
Wireless switch not able to control the device reliably.	The Wireless switch and the device are too far away from each other.	Place the Wireless switch in a position closer to the device.
	The Wireless switch lost pairing or battery drained.	<ul style="list-style-type: none"> • Pair the device again. Refer to Pairing the device in Quick Home Connect, page 8 . • Replace the battery of the Wireless switch.
	Pairing different devices like Rotary dimmer and Blind control to the same channel of the Wireless switch.	Reset the Wireless switch and pair the devices again with different channels. Refer to Reset the Wireless switch and Pairing the device in Quick Home Connect .



Scenario	Procedure
Central control of multiple devices with Wireless switch. (Applicable only for users with multiple Home Connect kits).	If you wish to have a centralized control with a single Wireless switch, first pair the central control Wireless switch with devices and then pair the other Wireless switch with the remaining devices.

Pairing the device with Wiser Hub

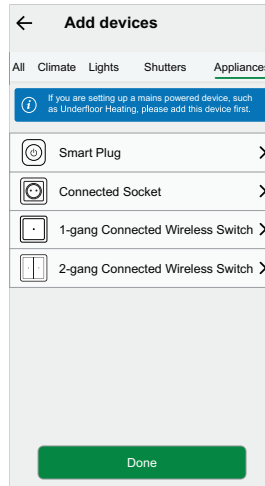
Using the Wiser Home app, pair your wireless switch with the **Wiser Hub** to access and control the Wireless Switch.

NOTE: You can change the Wireless Switch from 1-gang to 2-gang using the app during commissioning. If the Wireless Switch is already configured to 1-gang and you want to change it to 2-gang, then reset the device (1-gang), refer to [Resetting the device](#) and commission it again with 2-gang.

To Pair the Wireless Switch:

1. On the Home page, tap .
2. Tap **Devices** >  and tap **Appliances**.
3. In the app, select **1-gang Connected Wireless Switch** or **2-gang Connected Wireless Switch** as required.

TIP: For 1-gang/2-gang Wireless Switch, 2/4 push buttons are available for operation.



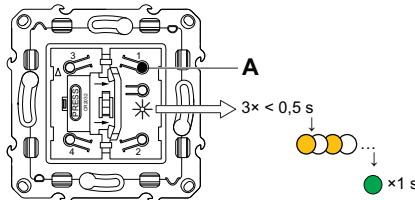
4. Tap **Next**.

TIP: The next screen shows the joining process of the **Wireless Switch**.

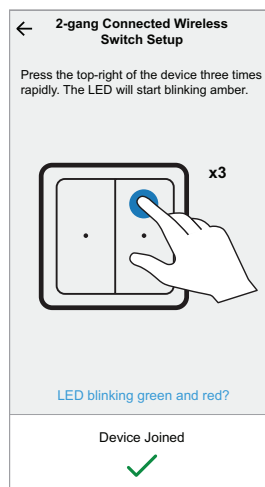
5. Remove the rocker of the Wireless Switch and short press the top-right push button (A) 3 times.

Wait for a few seconds until the LED blinks amber and then turns green.

TIP: If LED blinks green and red, refer to the **Troubleshooting**, page 27.



Upon successful pairing, the app displays the device joining status.



6. Tap **Next** to assign a name to the Wireless Switch and add it to an existing room or a new room.

The wireless switch is now listed under the **All** devices or room tab.

Hint:

- If the Wireless Switch is configured as 2-gang, and you wish to switch it to 1-gang, you must reset the device and pair it again as a 1-gang.
- If the Wireless Switch is configured as 1-gang, and you wish to switch it to 2-gang, you must reset the device and pair it again as a 2-gang.

For more information, refer to [Resetting the device](#), page 21.


7. Assemble the rocker on the wireless switch.

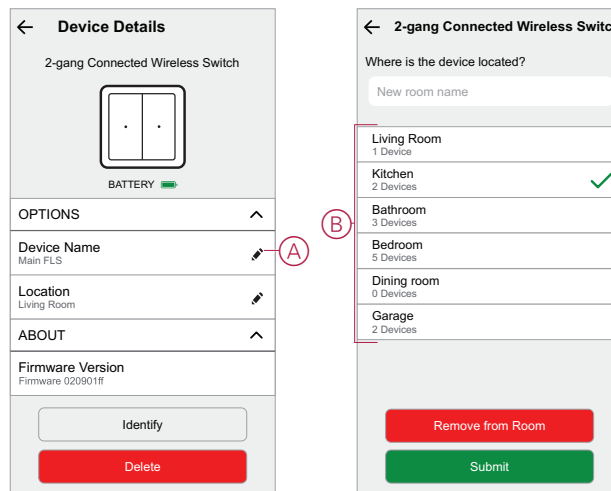
Configuring the device

Setting the device location in the room

Using the Wiser Home app, you can add your Wireless Switch to any room (such as bedroom, living room, dining room etc.).

To add a Wireless Switch to a room:

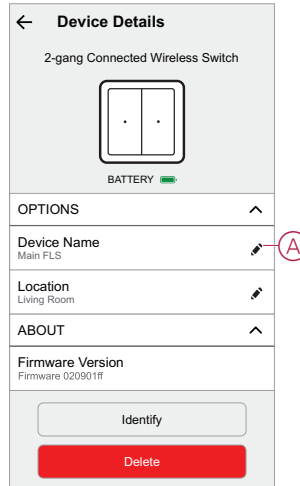
1. On the Home page, tap .
2. Tap **Devices > 2-gang Connected Wireless Switch > Location (A)** to assign the Wireless Switch to an existing room or a new room (B) and tap **Submit**.



Renaming the device

Using the Wiser Home app, you can rename your Wireless Switch.

1. On the Home page, tap .
2. Tap **Devices > 2-gang Connected Wireless Switch > Device Name (A)** to enter a new name.



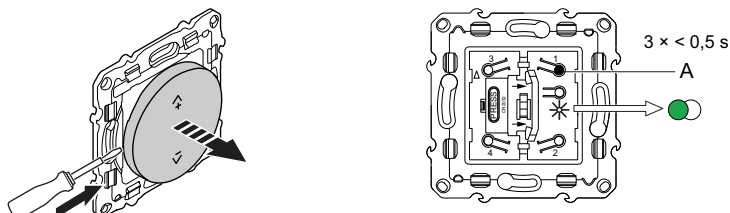
Identifying the device

Using the Wiser Home app, you can identify a wireless switch from the other available devices in the room.

To identify the wireless switch:

1. Remove the rocker.
2. Short press the push button (A) 3 times in quick succession.

The wireless switch wakes up for a minute and the status LED blinks green 5 times and then stops.

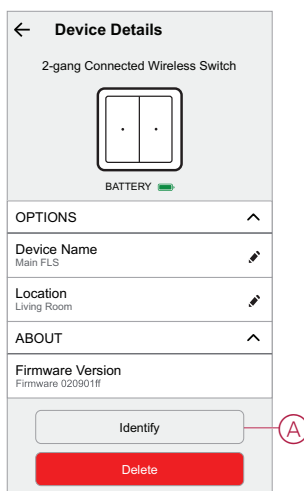


3. Tap  > **Devices** > **2-gang Connected Wireless Switch** > **Identify (A)** in the app.

The status LED blinks green upon successful identification of the wireless switch.

NOTE: It can take up to a minute for the wireless switch to indicate the status LED.

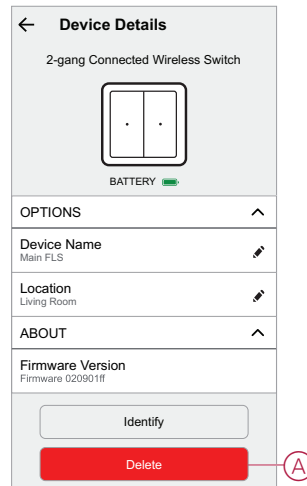
4. Tap **OK** when you have finished identifying the wireless switch.
5. Assemble the rocker on the wireless switch.



Removing the device from the system

Using the Wiser Home app, you can remove the Wireless Switch from the Wiser system.

1. On the Home page, tap .
2. Tap **Devices > 2-gang Connected Wireless Switch > Delete (A)**.



NOTE: By removing the device, it is reset to factory default.

TIP: If the device is still in the system, reset the device manually. Refer to reset the device, page 21.

Resetting the device

You can reset the wireless switch manually as required:

- When the Hub is replaced.
- Switching from 1-gang to 2-gang or vice versa.

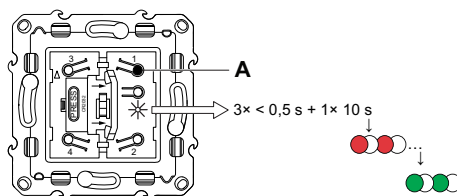
To reset the Wireless Switch:

1. Remove the rocker.
2. Short press (< 0,5 s) the push button (A) 3 times and then press and hold it (> 10 s).

After 10 s, the status LED blinks red.

3. Release the push button.
 - The status LED stops blinking upon successful reset of the device.
 - The wireless switch restarts and blinks green for few seconds. After reset, the status LED turns off.

NOTE: All configuration data, user data, and network data are deleted.

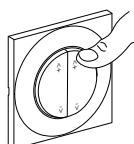


4. Assemble the rocker on the Wireless Switch.

Using the device

Switching operation

You can operate the Wireless Switch by pressing the push button manually.



Light

Short press the top (Λ+) or bottom (v-) the wireless switch to turn on or off the light.



Long press the top (Λ+) or bottom (v-) wireless switch (> 0,5 s) to increase or decrease the brightness.



Shutter

Long press top (Λ+) or bottom (v-) wireless switch (> 0,5 s) to move the blind up or down.

Moment

Short press the push button to activate a Moment.

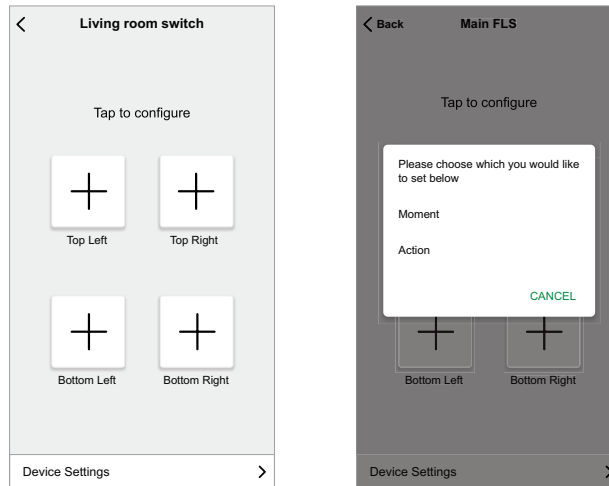
TIP: You can configure Wireless Switch push button with Action/ Moment using the app.

Assigning an Action to the Wireless Switch

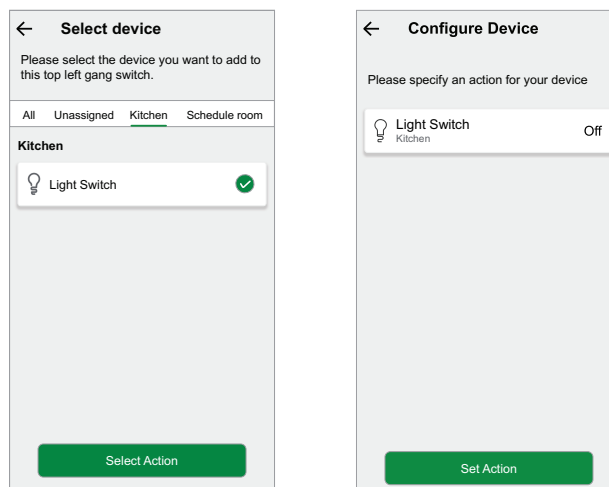
Using the Wiser Home app, you can configure an "Action" to the Wireless Switch (such as turning on/off the lights, moving the shutter up or down or any combination).


To configure an Action to the Wireless Switch:

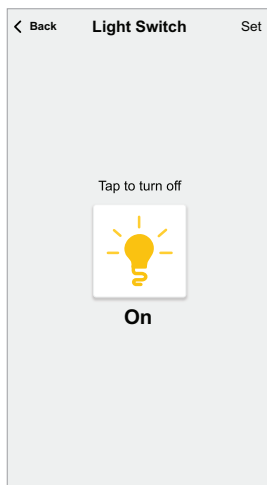
1. On the **Home** page, tap the Wireless Switch under **All** devices or under the room (tab).
2. Tap any key and select **Action**.



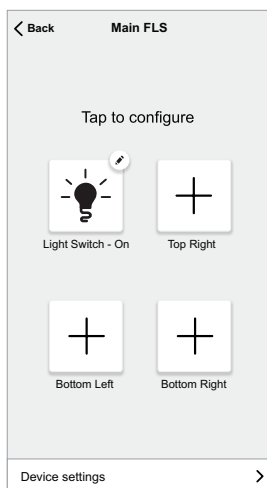
3. Select the device and tap **Select Action**.
4. On the **Configure Device** page, select the **Light Switch**.



5. Tap  to turn On the light and tap **Set > Set Action**.



In the next screen, ✓ shows that the Action is successfully configured. The **Top Left** key is configured with **Light Switch: On**.



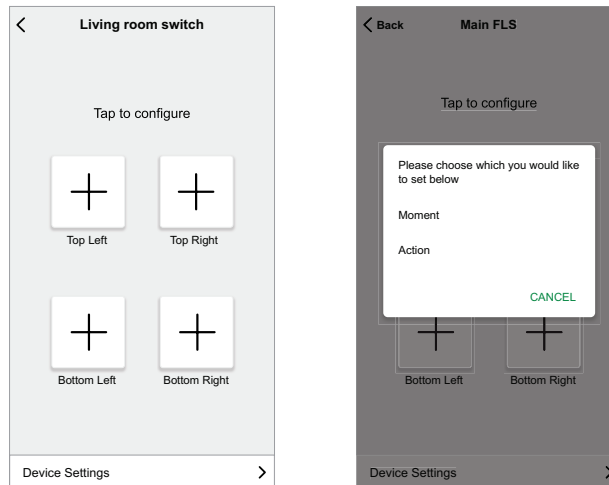
Assigning a Moment to the Wireless Switch

A Moment allows you to group multiple actions that are usually done together. Using the Wiser Home app, you can configure a Moment to the Wireless Switch (such as Good Night Moment: Fan on, light dimming 50%, shutter close).

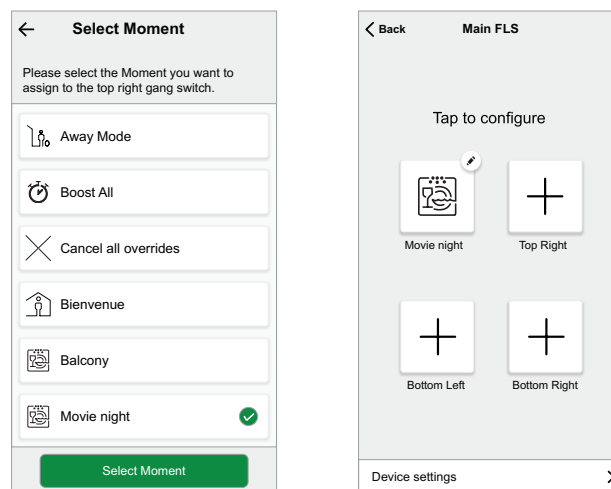
TIP: A moment can be assigned to any of the four keys individually.

To configure a Moment to the Wireless Switch:

1. On the Home page, tap the Wireless Switch under **All** devices or under the room (tab).
2. Tap any key and select **Moment**.



3. Select a Moment which you want to add to the key and tap **Select Moment**. In the next screen, ✓ shows the Moment is successfully configured.

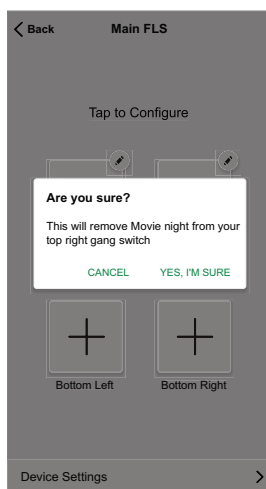


Removing configured Action/Moment

Using the Wiser Home app, you can remove the configured Action or Moment from the Wireless Switch key.

To remove the configured Action/Moment:

1. On the Home page, tap the Wireless Switch under **All** devices or under the room (tab).
2. Tap push button and tap **Action / Moment >Remove > YES, I'M SURE** to remove configured Action/Moment from the Wireless Switch key.



Replacing the battery

Replace the wireless switch when the battery level is low. The battery level can be seen in the app.

⚠ WARNING

CHEMICAL BURN HAZARD

Keep batteries out of reach of children. If swallowed, seek immediate medical attention.

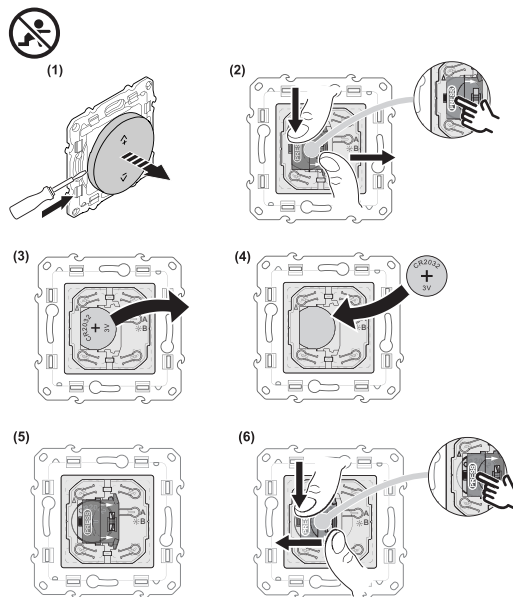
Failure to follow these instructions can result in death, serious injury, or equipment damage.

NOTE: The battery lid is designed with child lock protection.

1. Remove the rocker using a screwdriver.
2. Press and hold the battery lid at the marked area while sliding it to open.
3. Remove the old battery and press any push button for a few seconds.



NOTE: Dispose the used batteries, as per statutory regulations.

4. Insert a new battery with plus (+) symbol facing outward.
5. Place the battery lid.
6. Press and hold the battery lid at the same spot while sliding it to close.





LED indications


Pairing the device

User Action	LED Indication	Status
Press the push button 3 times	LED blinks orange, once per second. 	Pairing mode is active for 30 seconds. When pairing is completed, LED displays solid green for a few seconds, before turning Off. 



Resetting the device

User Action	LED Indication	Status
Press the push button 3 times and hold it down once for > 10 s.	LED blinks red, once per second. 	The device is in reset mode. The device then restarts and the LED starts blinking green, before turning Off. 

Battery level

LED Indication	Status
LED blinks red once, when a push button is pressed. 	The battery is low (< 10%), NOTE: A notification pop-up will appear on the app.

Troubleshooting

Symptom	Possible cause	Solution
LED blinks red.	The Wireless Switch battery is low or drained.	Replace the Wireless Switch battery, page 26. NOTE: A notification pop-up will appear on the app.
The Wireless Switch displays offline in the app.	The Wireless Switch battery is low or drained.	Replace the Wireless Switch battery, page 26.
	The Wireless Switch is disconnected from the network.	Press any push button on the Wireless Switch. NOTE: The first press does not trigger Wireless Switch operation.
The device is not able to connect with the Hub. After pressing top-right push button 3 times, the device LED blinks red/green for 30 s. 	Pairing mode has changed to Bluetooth mode.	Press the top-right push button on the device 3 times then hold for 20 s, until the LED blinks red. The device should reboot into the correct mode (Zigbee mode). 

Technical Data

Battery	CR2032
Battery life	Up to 5 years (depending on frequency of use and quality of battery)
IP rating	IP20
Operating frequency	2405-2480 MHz
Max. radio-frequency power transmitted	<10 mW
Operating temperature	-5 °C to 45 °C
Relative humidity	5% to 95%
Communication protocol	Zigbee 3.0

Compliance

Compliance information for Green Premium products

Find and download comprehensive information about Green Premium products, including RoHS compliance and REACH declarations as well as Product Environmental Profile (PEP) and End-of-Life instructions (EOLI).

General information about Green Premium products

Click the link below to read about Schneider Electric's Green Premium product strategy.

<https://www.schneider-electric.com/en/work/support/green-premium/>

Find compliance information for a Green Premium product

Click the link below to search for a product's compliance information (RoHS, REACH, PEP and EOLI).

NOTE: You will need the product reference number or product range to perform the search.

<https://www.reach.schneider-electric.com/CheckProduct.aspx?cskey=ot7n66yt63o1xblflyfj>

Trademarks

This guide makes reference to system and brand names that are trademarks of their relevant owners.

- Zigbee® is a registered trademark of the Connectivity Standards Alliance.
- Apple® and App Store® are brand names or registered trademarks of Apple Inc.
- Google Play™ Store and Android™ are brand names or registered trademarks of Google Inc.
- Wi-Fi® is a registered trademark of Wi-Fi Alliance®.
- Wiser™ is a trademark and the property of Schneider Electric, its subsidiaries and affiliated companies.

Other brands and registered trademarks are the property of their respective owners.

Schneider Electric
35 rue Joseph Monier
92500 Rueil Malmaison
France

+ 33 (0) 1 41 29 70 00

www.se.com

As standards, specifications, and design change from time to time,
please ask for confirmation of the information given in this publication.

© 2023 – Schneider Electric. All rights reserved.

DUG_Odace_Wireless Switch_WH-01