

# Wiser Motion Sensor

## Device user guide

Information about features and functionality of the device.

04/2022

# Legal Information

The Schneider Electric brand and any trademarks of Schneider Electric SE and its subsidiaries referred to in this guide are the property of Schneider Electric SE or its subsidiaries. All other brands may be trademarks of their respective owners.

This guide and its content are protected under applicable copyright laws and furnished for informational use only. No part of this guide may be reproduced or transmitted in any form or by any means (electronic, mechanical, photocopying, recording, or otherwise), for any purpose, without the prior written permission of Schneider Electric.

Schneider Electric does not grant any right or license for commercial use of the guide or its content, except for a non-exclusive and personal license to consult it on an "as is" basis. Schneider Electric products and equipment should be installed, operated, serviced, and maintained only by qualified personnel.

As standards, specifications, and designs change from time to time, information contained in this guide may be subject to change without notice.

To the extent permitted by applicable law, no responsibility or liability is assumed by Schneider Electric and its subsidiaries for any errors or omissions in the informational content of this material or consequences arising out of or resulting from the use of the information contained herein.

---

# Table of Contents

Safety information .....	5
Wiser Motion Sensor .....	6
For your safety .....	6
About the device .....	6
Installing the device .....	7
Pairing the device .....	7
Configuring the device .....	9
Renaming the device .....	9
Changing the device location .....	10
Setting the device sensitivity .....	11
Setting detection delay .....	12
Defining Lux setting .....	13
Using the device .....	14
Checking the device history .....	15
Setting device notification .....	16
Identifying the device .....	17
Resetting the device .....	18
Removing the device .....	19
Creating an automation .....	20
Deleting an automation .....	23
Example of an automation .....	24
Replacing the batteries .....	27
LED Indications .....	28
Troubleshooting .....	29
Technical Data .....	29



# Safety information

## Important information

Read these instructions carefully and look at the equipment to become familiar with the device before trying to install, operate, service, or maintain it. The following special messages may appear throughout this manual or on the equipment to warn of potential hazards or to call attention to information that clarifies or simplifies a procedure.



The addition of either symbol to a “Danger” or “Warning” safety label indicates that an electrical hazard exists which will result in personal injury if the instructions are not followed.



This is the safety alert symbol. It is used to alert you to potential personal injury hazards. Obey all safety messages that accompany this symbol to avoid possible injury or death.

### **DANGER**

**DANGER** indicates a hazardous situation which, if not avoided, **will result in death or serious injury**.

**Failure to follow these instructions will result in death or serious injury.**

### **WARNING**

**WARNING** indicates a hazardous situation which, if not avoided, **could result in death or serious injury**.

### **CAUTION**

**CAUTION** indicates a hazardous situation which, if not avoided, **could result in minor or moderate injury**.

### **NOTICE**

NOTICE is used to address practices not related to physical injury.

# Wiser Motion Sensor



CCT595012

## For your safety

### NOTICE

#### RISK OF DAMAGE TO DEVICE

- Always operate the product in compliance with the specified technical data.
- Do not install the sensor in a place with strong sunlight or wind (for example, close to ventilation).
- Temperatures greater than 32 °C degrade the sensor's ability to measure sensitivity, detection range, and angle.

**Failure to follow these instructions can result in equipment damage.**

## About the device

The Wiser Motion Sensor (hereinafter referred to as **sensor**) detects nearby movement and measures the luminance of the environment.

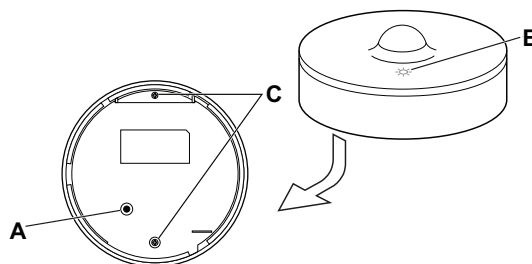
The sensor sends the data to the **Wiser Hub**. The threshold of luminance settings and/or detection of movement can be configured in the Wiser app.

#### Features of the sensor:

- Detect motion and send this information to the **Wiser Hub**.
- Detect and measure the lux level of the environment and send this information to the **Wiser Hub**.
- Send the sensor battery level and offline status information to the **Wiser Hub**.

## Operating elements

- A. Function key
- B. Status LED
- C. Screws





## Installing the device

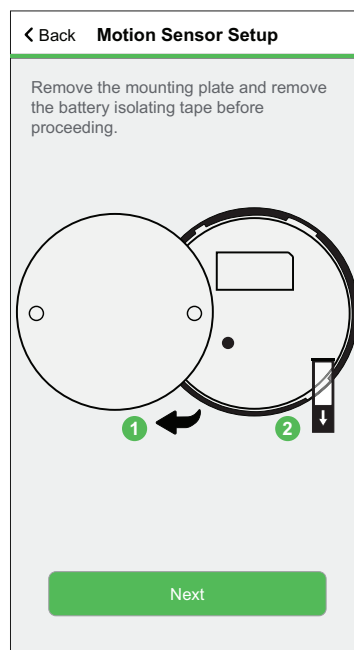
Refer to the installation instruction supplied with this product.

## Pairing the device

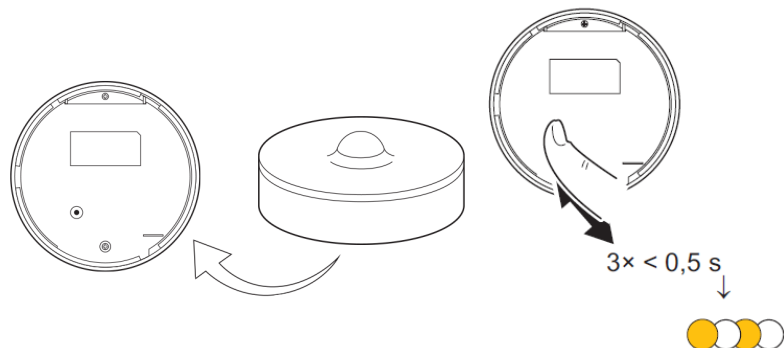
Using the Wiser Home app, you can pair your sensor with the **Wiser Hub** to access and control the sensor.

Follow the steps to pair the sensor:

1. On the Home page, tap  icon.
2. Tap **Devices** >  icon > **Safety and Security** (tab).
3. Tap **Motion Sensor** > **Next**.  
The next screen shows the sensor joining process.

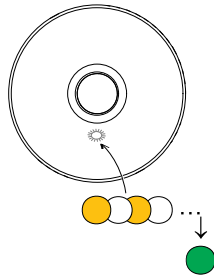


4. Short press the function key 3 times (< 0.5 s).  
The LED blinks amber.



5. Wait for a few seconds until the sensor LED turns green.

**TIP:** The stable green LED on the sensor shows that it is successfully connected to the **Wiser Hub**.



You will see **Device joined** at the bottom of the screen once the sensor has been successfully connected to the **Wiser Hub**.



**NOTE:** You can now mount the sensor on the wall or ceiling, as shown in the installation guide.

6. Tap **Next** to enter the sensor name.
7. Tap **Next** to assign sensor location and then tap **Submit**.

**TIP:** You can find the paired sensor name and its location on the **All** or **Room** tab on the Home page.



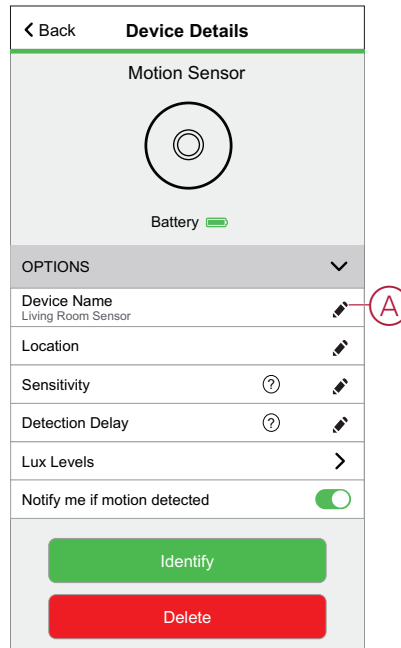
# Configuring the device

## Renaming the device

Using the Wiser Home app, you can rename the sensor. Follow the steps to rename the sensor:


1. On the Home page, tap  icon.
2. Tap **Devices > Motion Sensor > Device Name (A)**.

**TIP:** Additionally, you can rename the sensor by tapping on the Home page **Motion Sensor > Device settings > Device Name (A)**.

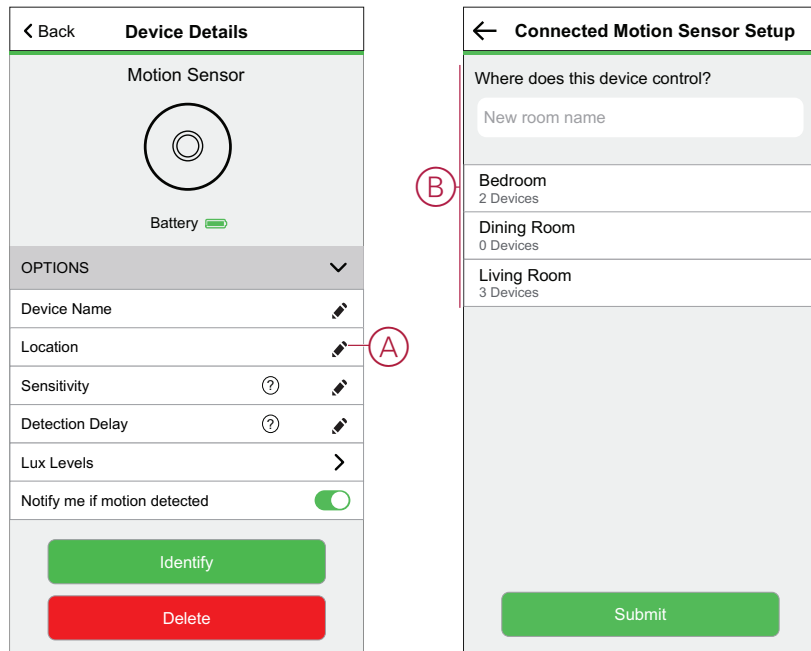


## Changing the device location

Using the Wiser Home app, you can change the sensor location. Follow the steps to change the sensor location:


1. On the Home page, tap  icon.
2. Tap **Devices > Motion Sensor > Location (A)** to assign the sensor in your existing room or a new room (B).

**TIP:** Additionally, you can change the sensor location by tapping on the Home page **Motion Sensor > Device settings > Location (A)**.



## Setting the device sensitivity

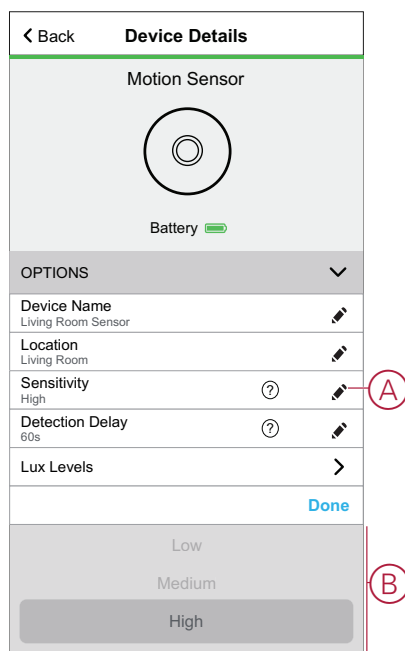
Using the Wiser Home app, you can set sensitivity levels of the sensor. Follow the steps to set the sensitivity levels of the sensor:

1. On the Home page, tap  icon.
2. Tap **Devices > Motion Sensor > Sensitivity (A)** to select one of the following option (B):
  - **Low**
  - **Medium**
  - **High**

**NOTE:** Sensitivity is set to **Medium** by default.

**TIP:**


- Additionally, you can change the sensor sensitivity levels by tapping on the Home page **Motion Sensor > Device settings > Sensitivity (A)**.
- Adjusting the sensitivity may increase or decrease the events the sensor detects. Selecting “High” sensitivity level detects the slightest movement.



3. Tap **Done**.

## Setting detection delay

Using the Wiser Home app, you can set the detection delay time for the sensor. Follow the steps to set the detection delay time:

1. On the Home page, tap  icon.

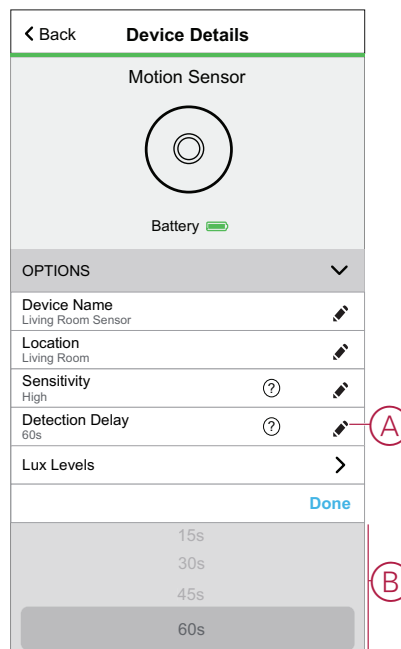
**NOTE:** Before applying the new settings, please wake up the sensor (press the function key or simulate the motion).

2. Tap **Devices > Motion Sensor > Detection delay** (A) to select one of the following option (B):

- **15s**
- **30s**
- **45s**
- **60s**

**TIP:** Additionally, you can set the sensor detection delay time by tapping on the Home page **Motion Sensor > Device settings > Detection delay** (A).

**NOTE:** Changing the detection delay time from long to short duration shortens battery life.




3. Tap **Done**.

## Defining Lux setting

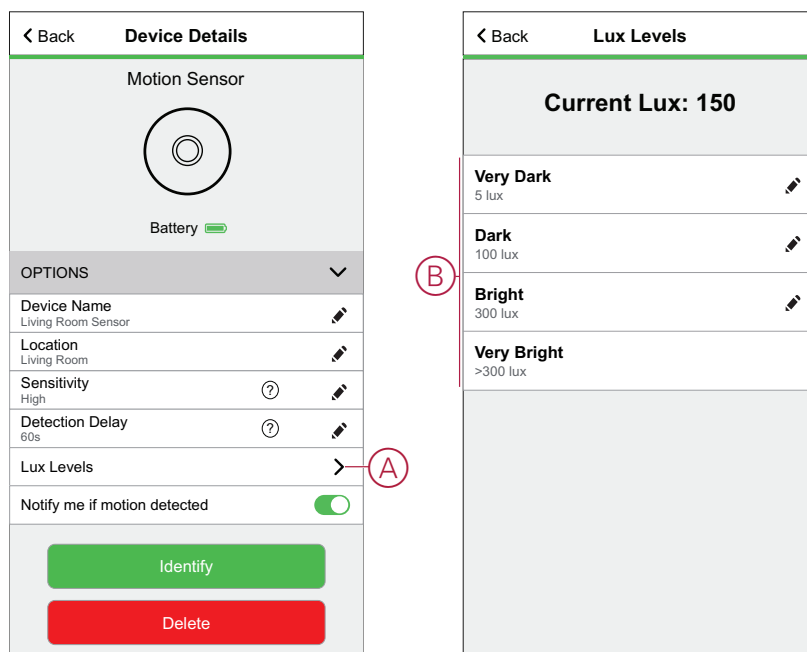
Using the Wiser app, you can define the threshold value for lux ranges (such as very dark, dark, bright, very bright) of the environment. This will prevent the false alarm caused by changes in the light intensity.

Follow the steps to set the lux value:

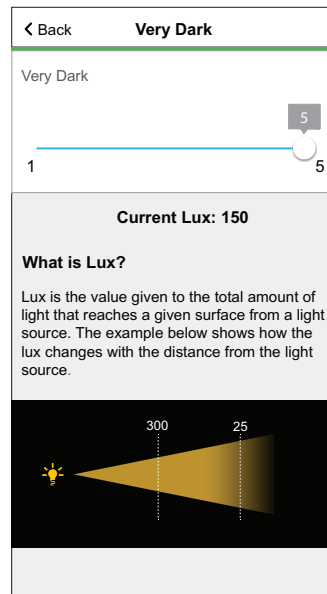
1. On the Home page, tap  icon.
2. Tap **Devices > Motion Sensor > Lux levels (A)** to select and define threshold value one of the following option (B):
  - **Very dark**
  - **Dark**
  - **Bright**
  - **Very bright**

**TIP:** Additionally, you can set the sensor lux value by tapping on the Home page **Motion Sensor > Device settings > Lux levels (A)**.

**NOTE:** A lux value represents the present light level in the environment that the sensor measures.



**NOTE:** In the sensor, the lux value is predefined by default. However, you can change the lux value using the sliding bar; for example, see Very Dark.



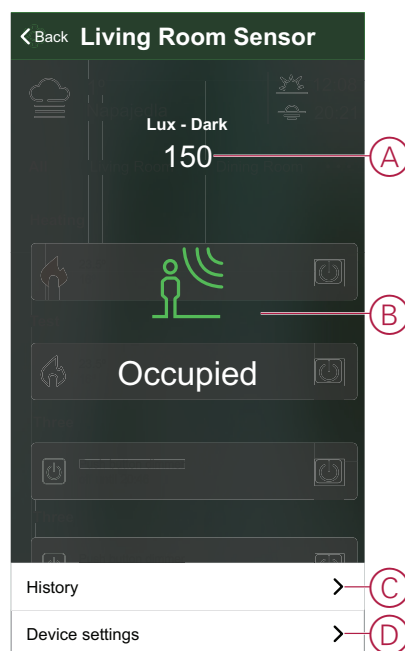
## Using the device

The Control Panel of the sensor allows you to view if the motion is detected or not.

On the **Home** page, tap **All > Motion Sensor** to access the control panel.

On the Sensor control panel page, you can see the following:

- Current lux level (A)
- Motion detection status (B)
- History (C)
- Device settings (D)



## Checking the device history

By using the Wiser Home app, you can view the sensor's history, which provides information about when motion detected event was logged. Each motion detected event is logged and stored in the cloud.

**NOTE:** If the cloud connection is lost, the motion events will not be displayed in the sensor's history.

Follow the steps to view the sensor history:


1. On the Home page, tap **All** (tab) > **Motion Sensor**.
2. On the device control panel page, tap **History**.

**TIP:** The logged event appears on the sensor's history page, even if the motion notification switch, page 16 is toggled off on the device details page.

< Back	History
TODAY	
08:30:25	Occupied
09:42:42	Occupied
14:21:35	Occupied
YESTERDAY	
09:21:42	Occupied
11:42:42	Occupied
10TH DECEMBER 2021	
05:21:42	Occupied
06:42:42	Occupied
09TH DECEMBER 2021	
11:21:42	Occupied
<a href="#">Load More</a>	

## Setting device notification

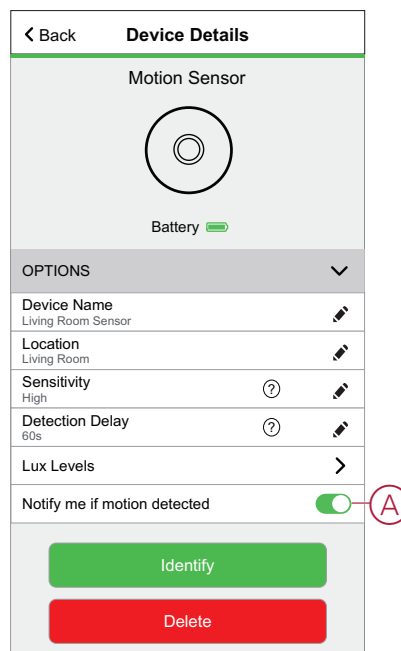
Using the Wiser Home app, you can enable or disable the sensor notification. Follow the steps to enable or disable the sensor notification:

1. On the Home page, tap  icon.
2. Tap **Devices > Motion Sensor > Notify me if motion detected (A)** to enable or disable the sensor notification toggle switch.

**TIP:** Additionally, you can enable or disable the sensor notification toggle switch by tapping on the Home page **Motion Sensor > Device settings > Notify me if motion detected (A)**.

**NOTE:**

- Sensor notification toggle switch (A) is OFF by default.
- Notifications created via automation are treated as separate notifications.






## Identifying the device

Using the Wiser Home app, you can identify the sensor from the other available devices in the room.

Follow the steps to identify the sensor:

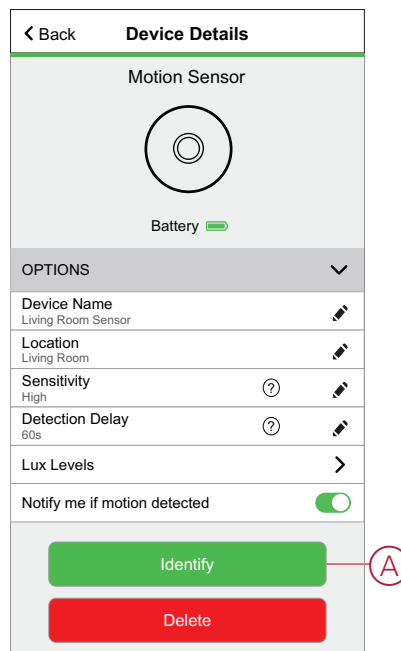
1. On the Home page, tap  icon.

**NOTE:** Please wake up the sensor (press the function key or simulate the motion).

2. Tap **Devices > Motion Sensor > Identify (A)**.

**TIP:** Additionally, you can identify the sensor by tapping on the Home page **Motion Sensor > Device settings > Identify (A)**.

**NOTE:** The sensor LED blinks to identify the sensor and continues blinking green until you tap **Ok**.



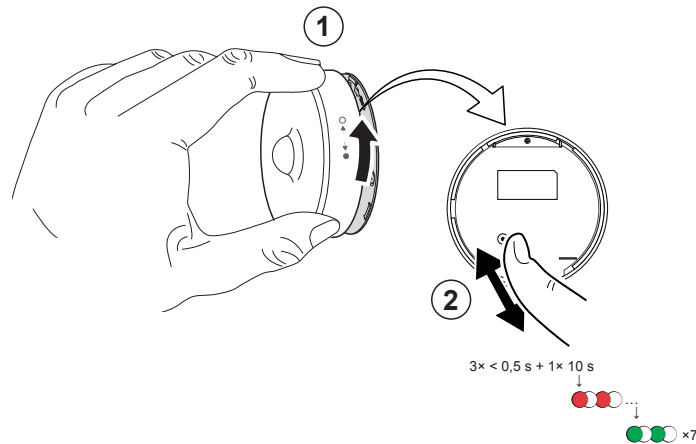
## Resetting the device

You can reset the sensor to factory default manually.  
Follow the steps to reset the sensor:

1. Rotate the sensor counterclockwise to unlock it from the base plate.
2. Short-press the function key three times ( $<0.5$  s) and then long-press the function key once ( $>10$  s); the LED will blink red after 10 s, then release the function key.


Upon successful reset of the sensor, the LED stops blinking. The sensor restarts and blinks green for a few seconds.

**NOTE:** After reset, the LED turns off to save the battery.

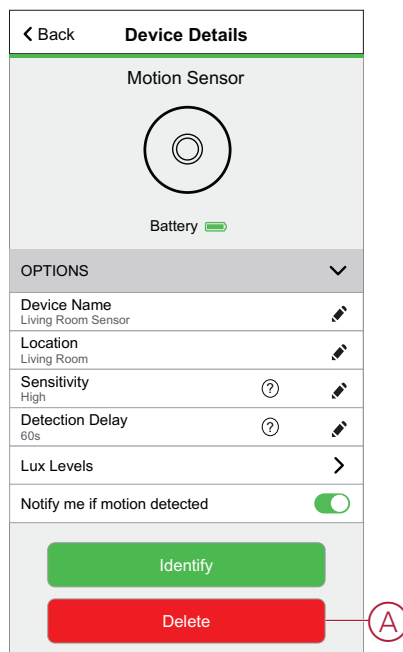


## Removing the device

Using the Wiser Home app, you can remove the sensor from the Wiser system. Follow the steps to remove the sensor:

1. On the Home page, tap  icon.
2. Tap **Devices > Motion Sensor > Delete (A)**.

**TIP:** Additionally, you can remove the sensor from the Wiser system by tapping on the Home page **Motion Sensor > Device settings > Delete (A)**.



3. Read the confirmation message and tap **Ok** to remove the sensor from the Wiser system.

**NOTE:**

- Removing the sensor will reset the sensor. After resetting, the LED blinks amber indicating that the sensor is ready for pairing.
- If there is a problem while pairing or resetting the sensor, refer to [Resetting the device](#), [Resetting the device](#), page 18.

## Creating an automation



Using the Wiser app, you can create automations for the sensor by adding conditions and actions. When conditions are met, actions are triggered automatically.

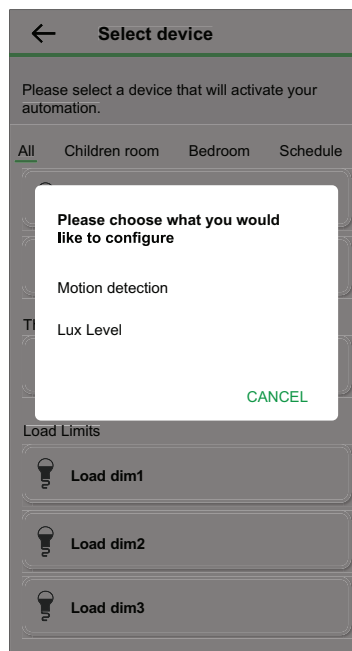
### Adding condition

Using the Wiser app, you can add a condition to your automation.

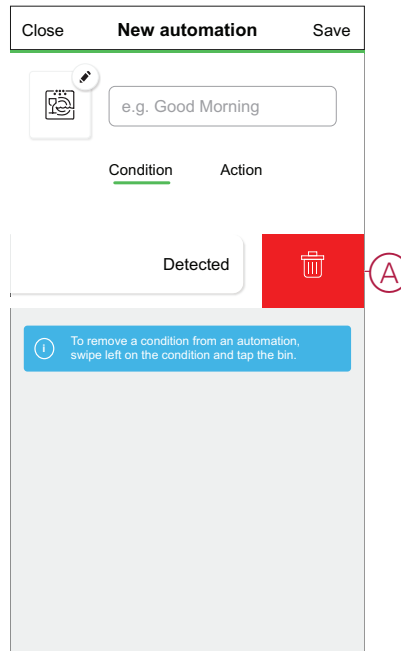
**NOTE:** You can add one condition in an automation; to add another condition, you need to create another automation.

Follow the steps to add a condition:

1. On the Home page, tap  icon.
2. Tap **Automations** >  icon.
3. Tap **Condition** > **Add a condition** and find your sensor from the list of devices.
4. Tap **Motion Sensor** and choose one of the following:
  - **Motion detection** — Select any motion state from **Detected** / **Not Detected** and tap **Set**.
  - **Lux level** — Select any level from **Very bright** / **Bright** / **Dark** / **Very dark** and tap **Set**.



**NOTE:** To remove the condition, swipe left on the condition and tap the bin (A).



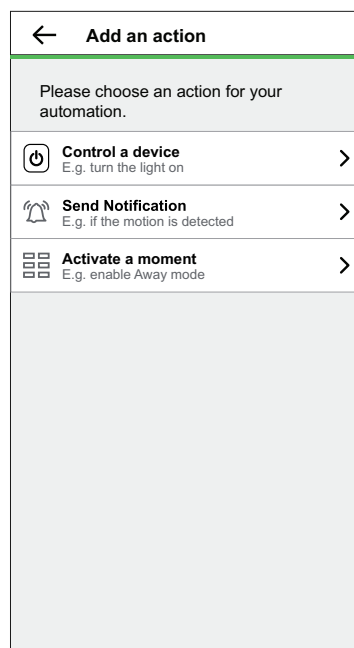
## Adding Action

Using the Wiser app, you can add an action to your automation that will trigger automatically when the condition is met.

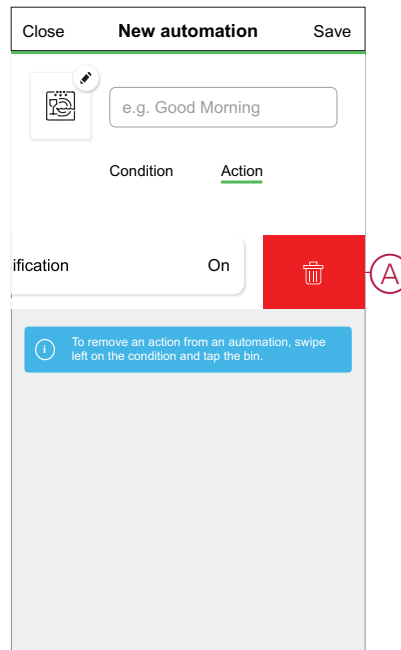
**NOTE:** You can add one action in an automation; to add another action, you need to create another automation.

Follow the step to add an action:

1. Tap **Action > Add an action** and then choose one of the following:
  - **Control a device** – Select the devices to trigger.
  - **Send notification > Notify me** – Enable notification for automation.
  - **Activate a moment** – Select the moment to trigger.




**NOTE:** To remove the action, swipe left on the action and tap the bin icon (A).

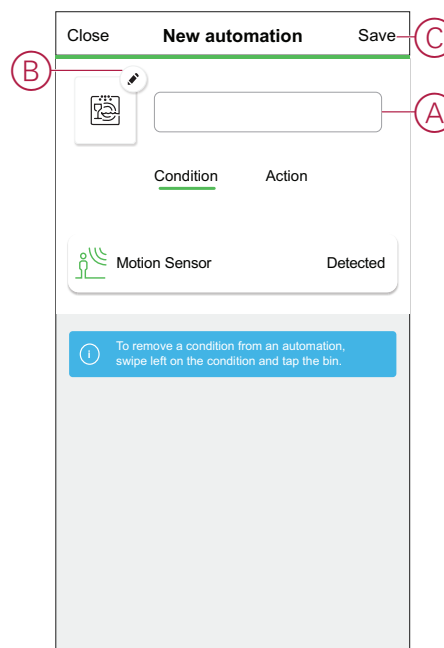


## Saving Automation

Save the automation after adding the condition and action. Follow the steps for saving the automation:


1. Enter the name of the automation in the field box (A).  
You can choose the cover image that best represents your automation by tapping  icon (B).
2. Tap **Save** (C).

**NOTE:** You can add up to 10 automations.



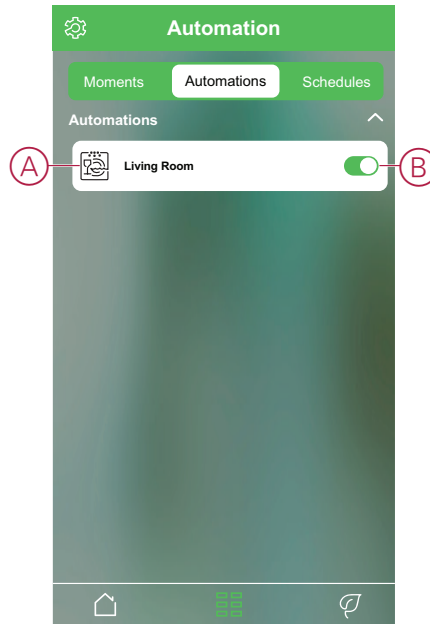
## Deleting an automation

Using the Wiser app, you can delete the automation. Follow the steps to delete the automation:

1. On the Home page, tap  icon.
2. Tap **Automations** (tab) and find your automation.
3. Tap automation **Living Room** (A).

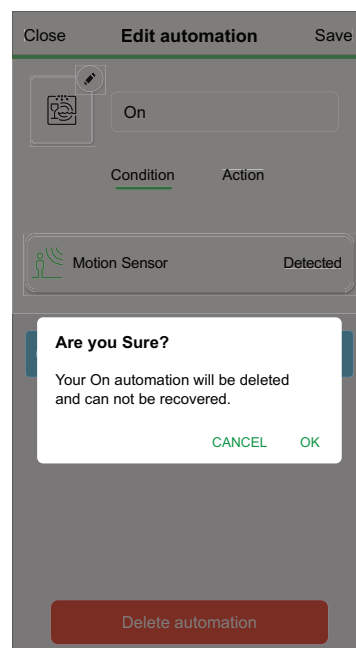
**NOTE:** Living Room is an example of automation. You can name your automation based on your preferences.

**TIP:** You can enable or disable the automation by tapping the toggle switch (B).



4. Tap **Delete automation > OK**.

**TIP:** On the **Edit automation** page, you can also rename and change the icon of your automation.

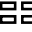


## Example of an automation

This demonstration shows you how to create automations that switch on lights with a 50% brightness level when a motion is detected and switch it off when motion is no longer detected.

**NOTE:** It is mandatory to create two automations. First, switch on the dimmer light with 50% brightness when motion is detected. Second, switch off the dimmer light when the motion is no longer detected. **The dimmer will not be switched off by itself unless you create second automation.**

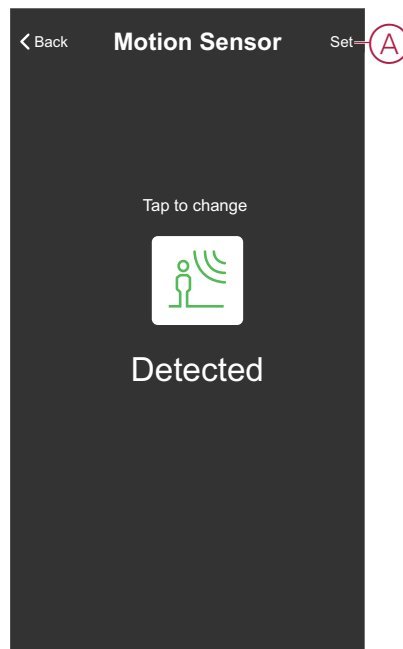
Follow the steps to create automation:

1. On the Home page, tap  icon.

2. Tap **Automations** >  icon.

– **First Automation**

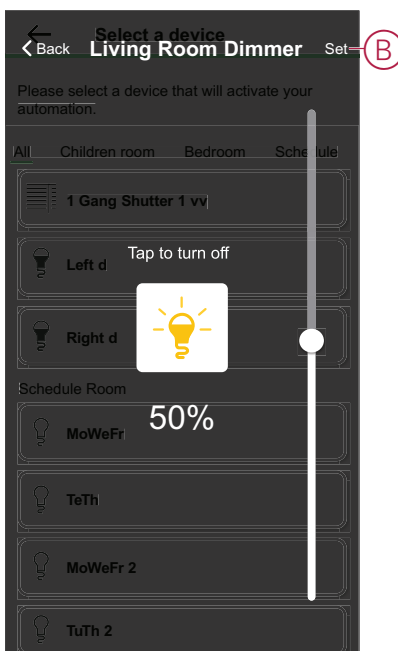
- Tap **Condition** > **Add a condition** and find your sensor from the list of devices.
- Tap **Motion Sensor** > **Motion detection** > **Detected** > **Set (A)**.




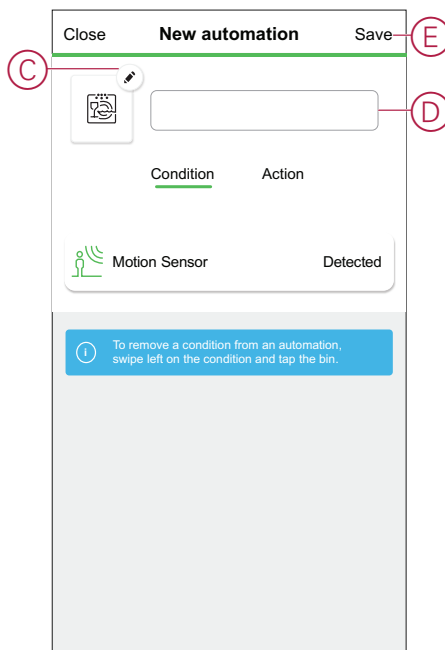


- Tap **Action > Control a device > Living Room Dimmer**.
- Adjust the brightness to 50% on the vertical sliding bar and tap **Set** (B).

**TIP:** Adding the brightness level will switch On the light when the automation is triggered. You need not add a task to switch On the Dimmer separately.



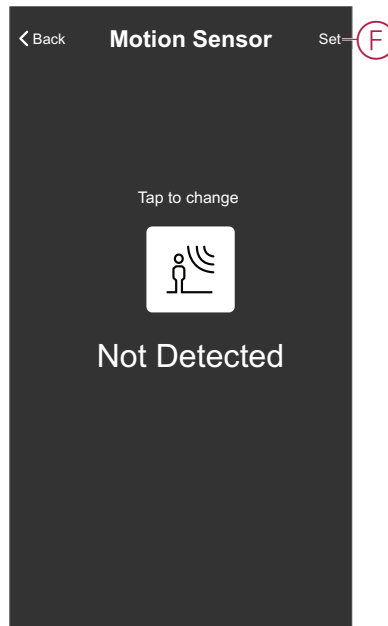
- You can choose the cover image that best represents your automation by tapping  icon (C).
- Enter the name of the automation (D) and tap **Save** (E).



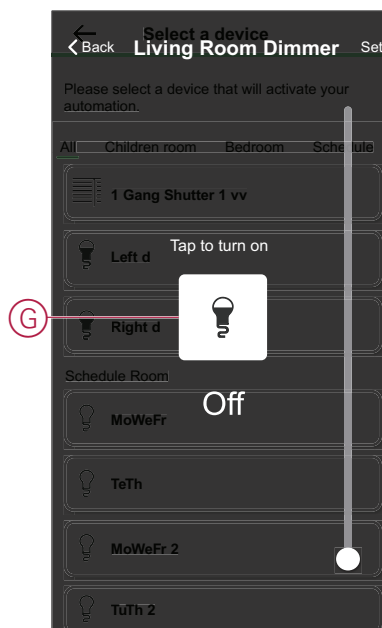
**NOTE:** Once the automation is saved, it is visible on the Automation tab. You can tap the toggle switch on the automation to enable it.

## – Second Automation

- Tap **+** icon.
- Tap **Condition > Add a condition** and find your sensor from the list of devices.
- Tap **Motion Sensor > Motion detection > Not Detected > Set (F)**.



- Tap **Action > Control a device > Living Room Dimmer**.
- Tap to switch off the light (G).



- Enter the name of the automation and tap **Save**.  
Once the automation is saved, it is visible on the Automation tab. You can tap the toggle switch on the automation to enable it.

## Replacing the batteries

Follow the steps to replace the batteries:

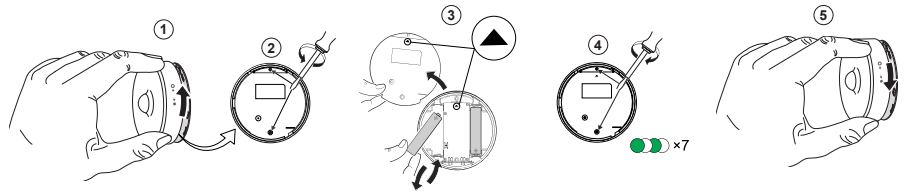
1. Rotate the sensor counterclockwise to unlock it from the base plate.
2. Remove the screws from the battery cover to access the batteries.
3. Replace the batteries with proper polarity and then re-install the battery cover.

The LED blinks green seven times and then stops blinking.

**NOTE:** Make sure that the triangle marks on the battery cover and sensor are aligned.



4. Tighten the screw that holds the sensor and its battery cover.
5. Position the sensor on the base plate and then rotate it clockwise until it locks onto the base plate.

**IMPORTANT:** Dispose used batteries, as per statutory regulations.








## LED Indications





### Initial Stage

Action	LED Indication	Status
Green LED blinks 7 times (1 Hz)	 → (7x) → 	After the sensor is powered On for the first time or after the batteries were replaced.





### If not paired yet

Action	LED Indication	Status
Amber LED blinks (1 Hz)	 → (2 min) →  → (3 sec) → 	Indicates the pairing mode after function key is pressed 3 times within 1 second. If pairing is not successful, the amber LED is On for 3 seconds and then turns Off.
Green LED is On for 3 seconds	 → (3 sec) → 	Pairing was successful.


### If already paired

Action	LED Indication	Status
Green LED blinks 5 times (1 Hz)	 → (5x) → 	The sensor is paired and connected.
An amber LED blinks for three seconds (4 Hz)	 → (3 sec) → 	The sensor is paired, but disconnected.


### Reset - After pressing the function key 3 times within 0.5 seconds and then hold for 10 seconds

Action	LED Indication
The red LED blinks for 10 seconds, remains on for 3 seconds, and then turns off. The sensor then restarts and blinks green for a few seconds.	 → (10 sec) →  → (3 sec) →  → 

### Battery level

LED Indication	Status
LED blinks amber once per minute. 	The battery is low (< 10%), replace the battery, page 27. <b>NOTE:</b> A notification pop-up will appear on the app.

### Identifying the device

LED Indication	Status
LED blinks green. 	Sensor is connected to the <b>Wiser Hub</b> . <b>NOTE:</b> This function is initiated from the app to identify the sensor.

## Troubleshooting

Symptom	Possible cause	Solution
The sensor triggers the automation/schedule, but does not show the status on the app.	The sensor may be undergoing an over-the-air (OTA) firmware update.	Wait for the firmware update to complete and then check that the sensor is reporting status. <b>NOTE:</b> The firmware update runs in the background.
LED blinks amber.	The sensor battery is low or drained.	Replace the battery in the device, page 27 <b>NOTE:</b> A notification pop-up will appear on the app.

## Technical Data

Battery	3 VDC, LR03 AAA x2
Battery life	Up to 5 years (may vary based on the usage, frequency of firmware update and environment)
Nominal power	≤90 mW
IP rating	IP20
Operating frequency	2405 – 2480 MHz
Max. radio-frequency power transmitted	≤7 dBm
Operating temperature	-10 °C to 50 °C
Relative humidity	10 % to 95 %
Lux measurement range	0 lx to 2000 lx
Lux resolution	1 lx
Dimensions	Ø 75.0 x 26.6 mm
Communication protocol	Zigbee 3.0 certified
Ceiling mounted at 2.5 m	
Detection angle	360°
Detection range	Ø 4 m
Wall mounted at 1.2 m	
Detection angle	90° to 110° horizontal and vertical
Detection range	5 m in radius

# Compliance

## Compliance information for Green Premium products

Find and download comprehensive information about Green Premium products, including RoHS compliance and REACH declarations as well as Product Environmental Profile (PEP) and End-of-Life instructions (EOLI).

### General information about Green Premium products

Click the link below to read about Schneider Electric's Green Premium product strategy.

<https://www.schneider-electric.com/en/work/support/green-premium/>

### Find compliance information for a Green Premium product

Click the link below to search for a product's compliance information (RoHS, REACH, PEP and EOLI).

**NOTE:** You will need the product reference number or product range to perform the search.

<https://www.reach.schneider-electric.com/CheckProduct.aspx?cskey=ot7n66yt63o1xbflyfj>

## Trademarks

This guide makes reference to system and brand names that are trademarks of their relevant owners.

- Zigbee® is a registered trademark of the Connectivity Standards Alliance.
- Apple® and App Store® are brand names or registered trademarks of Apple Inc.
- Google Play™ Store and Android™ are brand names or registered trademarks of Google Inc.
- Wi-Fi® is a registered trademark of Wi-Fi Alliance®.
- Wiser™ is a trademark and the property of Schneider Electric, its subsidiaries and affiliated companies.

Other brands and registered trademarks are the property of their respective owners.



Schneider Electric  
35 rue Joseph Monier  
92500 Rueil Malmaison  
France

+ 33 (0) 1 41 29 70 00

[www.se.com](http://www.se.com)

As standards, specifications, and design change from time to time,  
please ask for confirmation of the information given in this publication.

© 2022 – Schneider Electric. All rights reserved.

DUG\_Motion Sensor\_WH-00