

# MULTIBLOC® 4a.ST8

Size 4a, 690VAC, 1600A, 690VAC, Design for Bottom Fitting, 1-, 3-pole

## IEC FUSE SWITCH DISCONNECTORS

## NH FUSE SWITCH DISCONNECTOR



The production programme of MULTIBLOC® series 4a.ST8 - 1600 A comprises NH fuse switch disconnectors for 1600A.

They are designed for bottom fitting/panel installation and are available in single pole and triple pole units.

MULTIBLOC® size 4a are designed for NH fuse-links in accordance with IEC/EN 60269-2, VDE 0636-2, size 4a.

MULTIBLOC® offers the user the possibility of fast and easy installation as well as a high degree of security during installation and maintenance.

## TECHNICAL DATA OVERVIEW

Voltage AC	690 VAC
Amper (A)	1600 A
Size per Standard	4a
SCCR	Ue = AC 400 V; Ie = 1600 A 31,5kA Ue = AC 500 V; Ie = 1600 A 31,5kA Ue = AC 690 V; Ie = 1600 A 31,5kA
Mounting	bottom fitting/panel
Switchability	1-,3-pole switching

## FEATURES & BENEFITS

- Touch protection IP 20
- Safe on load connection/disconnection in accordance with IEC 60947-3

## APPLICATIONS

- Panel boards for industrial use
- Feeder pillars for industrial use
- Meter distribution units
- Measuring transformer cabinets
- Transmitting stations for telecommunications

## STANDARDS

- IEC/EN 60 947-3  
For NH-fuse links size 4a in accordance with IEC/EN 60 269-2, VDE 0636-2



# MULTIBLOC® 4a.ST8

Size 4a, 690VAC, 1600A, 690VAC, Design for Bottom Fitting, 1-, 3-pole

## PRODUCT RANGE



1.000.084

### MULTIBLOC® 4a.ST8 size 4a 1600A, 690VAC bottom fitting, single pole

Catalog number	Reference number	Poles	Cable termination components	Weight kg <sup>1</sup>	Package
1.000.084	X1023083	1	2xM12 terminal screws	5.00	1 piece

<sup>1</sup>weight in kg per piece or set including package

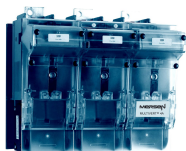


1.000.091

### MULTIBLOC® 4a.ST8 size 4a 1600A, 690VAC bottom fitting, triple pole

Catalog number	Reference number	Poles	Cable termination components	Design	Weight kg <sup>1</sup>	Package
1.000.091	Y1023084	3	2xM12 terminal screws	single pole switching	13.70	1 piece
1.000.092	Z1023085	3	2xM12 terminal screws	triple pole switching	13.90	1 piece

<sup>1</sup>weight in kg per piece or set including package



1.000.092

# MULTIBLOC® 4a.ST8

Size 4a, 690VAC, 1600A, 690VAC, Design for Bottom Fitting, 1-, 3-pole

## TECHNICAL DATA IN ACCORDANCE WITH EN / IEC 60947

	4a.ST8 single pole	4a.ST8 triple pole
Number of poles/phases	1	3
Size	4a	4a
Conventional free air thermal current with NH-fuse links $I_{th}$	1600 A	1600 A
Max. power dissipation of fuse links $P_n$	140 W	140 W
Conventional free air thermal current with solid links $I_{th}$	1800 A	1800 A
Max. power dissipation of solid links $P_n$	42 W	42 W
Utilization category to IEC/EN 60947-3 $U_e = AC 400 V; I_e = 1250 A$ $U_e = AC 400 V; I_e = 1600 A$ $U_e = AC 690 V; I_e = 1600 A$ $U_e = DC 220 V; I_e = 1600 A$ $U_e = DC 440 V; I_e = 1250 A$	AC 22 B - AC 21 B DC 21 B DC 21 B	- AC 21 B - - -
Rated operational voltage $U_e$	690 V	690 V
Rated insulation voltage $U_i$	800 V	800 V
Rated impulse withstand voltage $U_{<sub>imp</sub>}$	8 kV	8 kV
Rated frequency	50 ... 60 Hz	50 ... 60 Hz
Degree of protection	IP 20	IP 20
Degree of pollution	3	3
Rated duty	uninterrupted duty	uninterrupted duty
Rated conditional short-circuit current with fuse links $U_e = AC 400 V; I_e = 1600 A$ $U_e = AC 500 V; I_e = 1600 A$ $U_e = AC 690 V; I_e = 1600 A$	31.5 kA 31.5 kA 31.5 kA	31.5 kA 31.5 kA 31.5 kA
Rated short circuit making capacity with solid links $I_{cm}$	100 kAsw	100 kAsw
Rated short-time withstand current $I_{cw}$	50 kA / 1 s	50 kA / 1 s
Power dissipation by $I_{th}$ without NH-fuse links	80 W	270 W
Power dissipation by $I_{th}$ without solid links	80 W	270 W
Installation mode	bottom fitting	bottom fitting
<b>Cable terminal connection</b>		
Standard cable terminal	M16	M16
for copper bars with max. dimensions	50 x 10 mm	50 x 10 mm

MERSEN reserves the right to change, update or correct, without notice, any information contained in this datasheet.



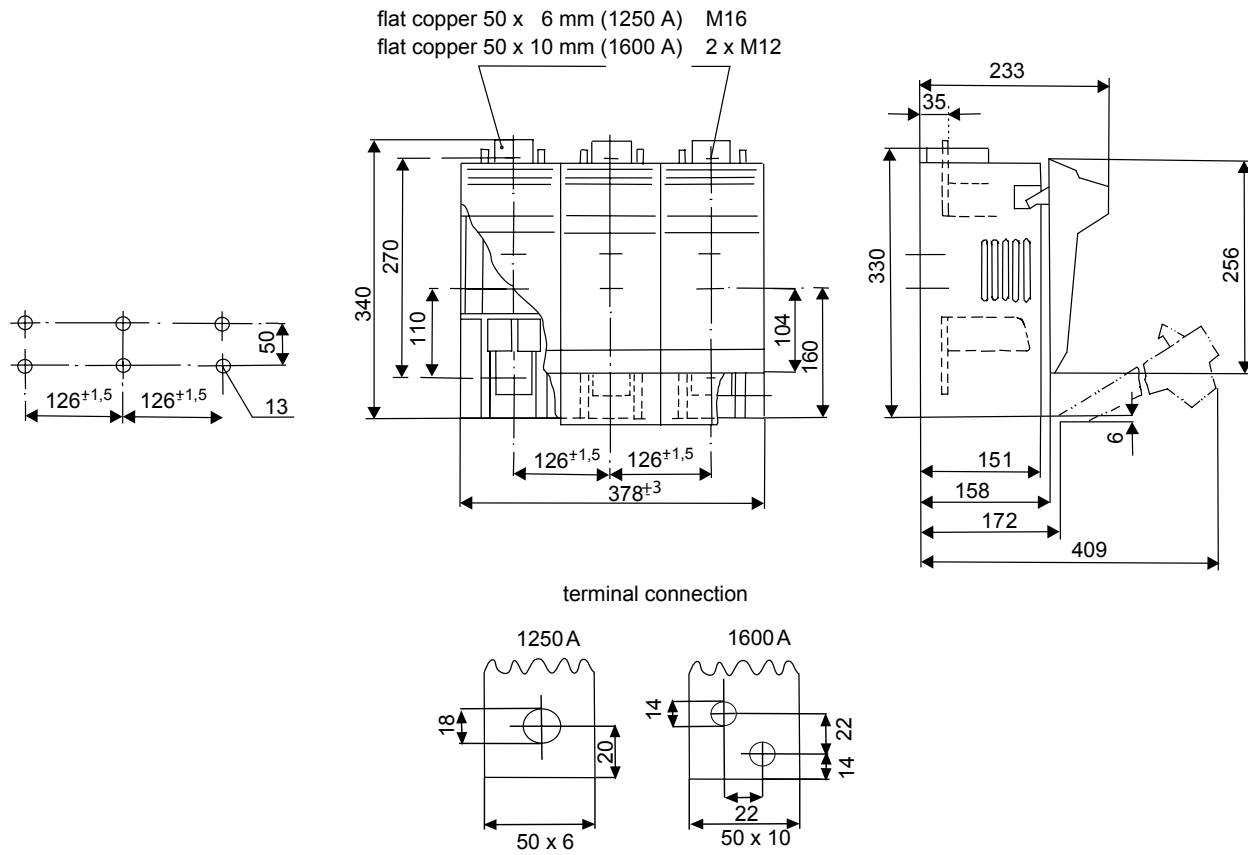
# MULTIBLOC® 4a.ST8

Size 4a, 690VAC, 1600A, 690VAC, Design for Bottom Fitting, 1-, 3-pole

## DIMENSIONS

**MULTIBLOC® 4a.ST8 NH-fuse switch disconnecter**  
**triple pole design for bottom fitting**

(M02003a)



Dimensions in mm