

MULTIBLOC® 00.RST9

Size 00, 160A, 690VAC, Design for bus bar installation, Triple Pole

IEC FUSE SWITCH DISCONNECTORS

NH FUSE SWITCH DISCONNECTOR



The production programme of MULTIBLOC® 00.RST9 comprises NH fuse switch disconnectors for 160A.

Products are designed in triple pole units for direct installation on to 40 mm and 60mm bus bar systems.

For installation of MULTIBLOC® NH fuse switch disconnectors of different sizes in distribution units with central cover, respective covers are used to obtain a uniform profile in height and length.

MULTIBLOC® size 00 are designed for NH fuse-links in accordance with IEC/EN 60269-2, VDE 0636-2, size 00: 160A.

The system is a modular system, which allows the installation and combination of individual components. MULTIBLOC® offers the user the possibility of fast and easy installation as well as a high degree of security during installation and maintenance.

TECHNICAL DATA OVERVIEW

Voltage AC	690 VAC
Voltage DC	440 VDC
Amper (A)	160 A
Size per Standard	00
SCCR	Ue = AC 400 V; Ie = 160 A 80kA Ue = AC 500 V; Ie = 160 A 80kA Ue = AC 690 V; Ie = 125 A 80kA
Mounting	bus bar installation
Switchability	triple pole switching

FEATURES & BENEFITS

- Touch protection IP 30
- Sealing and padlocking device integrated in switch door cover
- Voltage test through holes in slidable windows directly at contacts or tags of NH-fuse links
- Suitable for top/bottom cable terminal connections
- Cable termination: screw, clamp strap, Al-Cu clamp, frame clamp, extendable for V-terminal - optional
- For 40 and 60mm bus bar systems, snap on installation on 60mm system without tools
- Universally useable for bus bars with thickness of 5 and 10mm and widths of 12-30mm
- Installation covering bus bar carrier (max. height 14,5mm) lateral left or right possible
- Installation depth 95mm
- Fuse monitoring - optional
- Indicating switch for switch door position - optional
- Safe on load connection/disconnection in accordance with IEC 60947-3

APPLICATIONS

- House incoming units
- Meter distribution units
- Measuring transformer cabinets
- Transmitting stations for telecommunications

STANDARDS

- IEC/EN 60 947-3
For NH fuse-links size 000/00 in accordance with IEC/EN 60269-2, VDE 0636-2



MULTIBLOC® 00.RST9

Size 00, 160A, 690VAC, Design for bus bar installation, Triple Pole

PRODUCT RANGE

MULTIBLOC® 00.RST9 size 00 160A, bus bar installation 40mm, triple pole

Catalog number	Item number	Poles	Bus bar installation	Cable termination components	Package	Weight
2.074.000	W1022990	3	40 mm clamping bar	3 M8 terminal screws 3 clamp straps 4-70 mm ²	1 piece	1.06 kg



3.084.000



3.084.100



3.084.200

MULTIBLOC® 00.RST9 size 00 160A, bus bar installation 60mm, triple pole

Catalog number	Item number	Poles	Bus bar installation	Cable termination components	Design	Package	Weight
3.084.000	Z1022993	3	60 mm snap on	3 M8 terminal screws 3 clamp straps 4-70 mm ²	-	1 piece	0.93 kg
3.083.000	X1022991	3	60 mm snap on	3 frame clamps Cu 2,5-70 mm ² factory assembled	-	1 piece	0.88 kg
3.084.300	D1022997	3	60 mm snap on	3 M8 terminal screws 3 clamp straps 4-70 mm ²	fixed window to protect against unauthorized connection	1 piece	0.88 kg
3.083.300	Y1022992	3	60 mm snap on	3 frame clamps Cu 2,5-70 mm ² factory assembled	fixed window to protect against unauthorized connection	1 piece	0.88 kg
3.084.100	B1022995	3	60 mm snap on	3 M8 terminal screws 3 clamp straps 4-70 mm ²	with electronic fuse monitoring ESÜ installed (rated voltage = 525VAC)	1 piece	0.96 kg
3.084.200	C1022996	3	60 mm snap on	3 M8 terminal screws 3 clamp straps 4-70 mm ²	with electro-mechanic fuse monitoring MZS installed (galvanic isolation)	1 piece	1.46 kg

MERSEN reserves the right to change, update or correct, without notice, any information contained in this datasheet.

MULTIBLOC® 00.RST9

Size 00, 160A, 690VAC, Design for bus bar installation, Triple Pole

TECHNICAL DATA IN ACCORDANCE WITH EN / IEC 60947

	00.RST9 40mm, triple pole	00.RST9 60mm, triple pole
Number of poles/phases	3	3
Size	00	00
Conventional free air thermal current with NH-fuse links I_{th}	160 A	160 A
Max. power dissipation of fuse links P_n	12 W	12 W
Conventional free air thermal current with solid links I_{th}	200 A	200 A
Max. power dissipation of solid links P_n	1,2 W	1,2 W
Utilization category to IEC/EN 60947-3 $U_e = AC 400 V; I_e = 160 A$ $U_e = AC 500 V; I_e = 160 A$ $U_e = AC 690 V; I_e = 160 A$ $U_e = DC 220 V; I_e = 160 A$ $U_e = DC 440 V; I_e = 100 A$	AC 23 B AC 22 B AC 21 B DC 22 B DC 21 B	AC 23 B AC 22 B AC 21 B DC 22 B DC 21 B
Rated operational voltage U_e	690 V	690 V
Rated insulation voltage U_i	1000 V	1000 V
Rated impulse withstand voltage U_{imp}	8 kV	8 kV
Rated frequency	50 ... 60 Hz	50 ... 60 Hz
Degree of protection	IP 30	IP 30
Degree of pollution	3	3
Rated duty	uninterrupted duty	uninterrupted duty
Rated conditional short-circuit current with fuse links $U_e = AC 400 V; I_e = 160 A$ $U_e = AC 500 V; I_e = 160 A$ $U_e = AC 690 V; I_e = 125 A$	80 kA 80 kA 80 kA	80 kA 80 kA 80 kA
Rated short circuit making capacity with solid links I_{cm}	6.2 kAsw	6.2 kAsw
Rated short-time withstand current I_{cw}	4 kA / 1 s	4 kA / 1 s
Power dissipation by I_{th} without NH-fuse links	12 W	12 W
Power dissipation by I_{th} 200A without solid links	19 W	19 W
Installation mode	bus bar installation	bus bar installation
Cable terminal connection		
Standard cable terminal	M8	M8
for cable lugs Cu max.	2 x 70 mm ²	2 x 70 mm ²
for cable lugs Al max.	2 x 70 mm ²	2 x 70 mm ²
for copper bars with max. dimensions	20 x 5 mm	20 x 5 mm
Bus bar terminal connection		
Bus bar width (bus bar system = 40 mm)	12 mm	-
Bus bar thickness (bus bar system = 40 mm)	5 ... 10 mm	-
Bus bar width (bus bar system = 60 mm)	-	12 ... 30 mm
Bus bar thickness (bus bar system = 60 mm)	-	5 ... 10 mm
Bus bar system	40 mm	60 mm

MERSEN reserves the right to change, update or correct, without notice, any information contained in this datasheet.

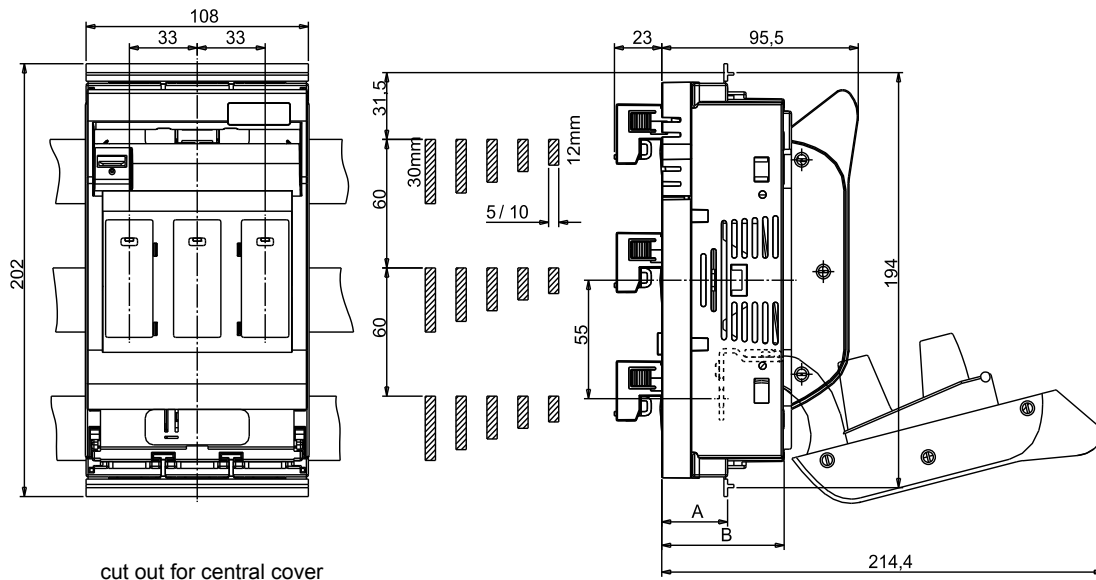
MULTIBLOC® 00.RST9

Size 00, 160A, 690VAC, Design for bus bar installation, Triple Pole

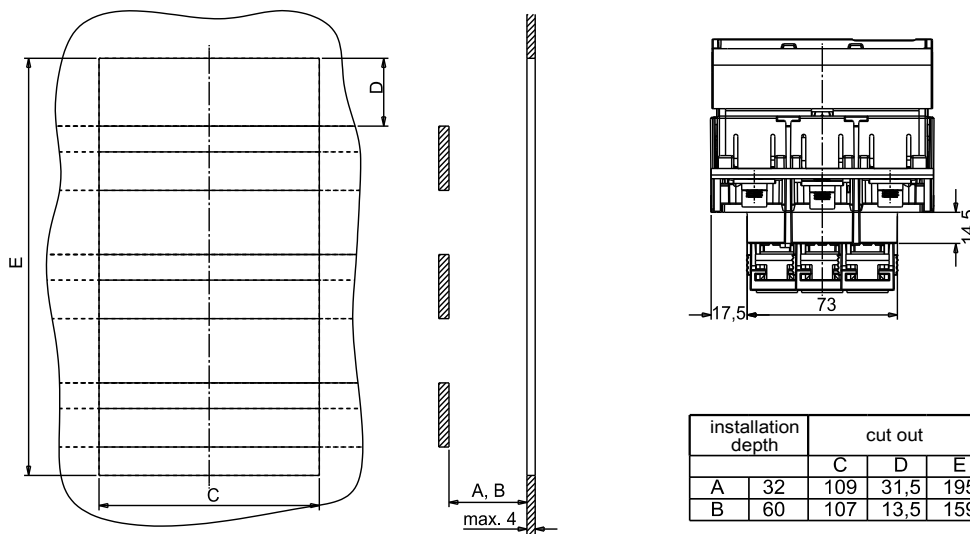
DIMENSIONS

MULTIBLOC® 00.RST9 NH-fuse switch disconnecter
triple pole design for bus bar installation

(M 01170)



cut out for central cover



installation depth	cut out			
	C	D	E	
A	32	109	31,5	195
B	60	107	13,5	159

Dimensions in mm

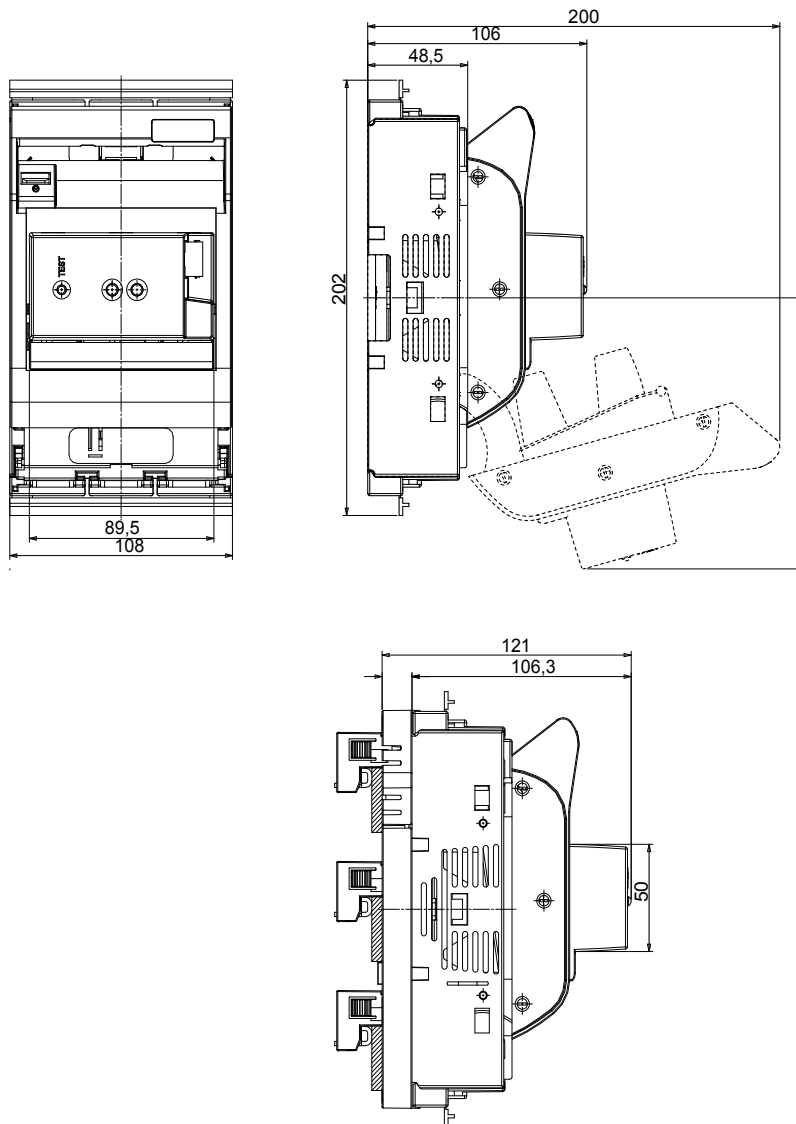
MULTIBLOC® 00.RST9

Size 00, 160A, 690VAC, Design for bus bar installation, Triple Pole

DIMENSIONS

MULTIBLOC® 00.ST9 and 00.RST9

triple pole with electronic fuse monitoring ESÜ (M 01172)



Dimensions in mm

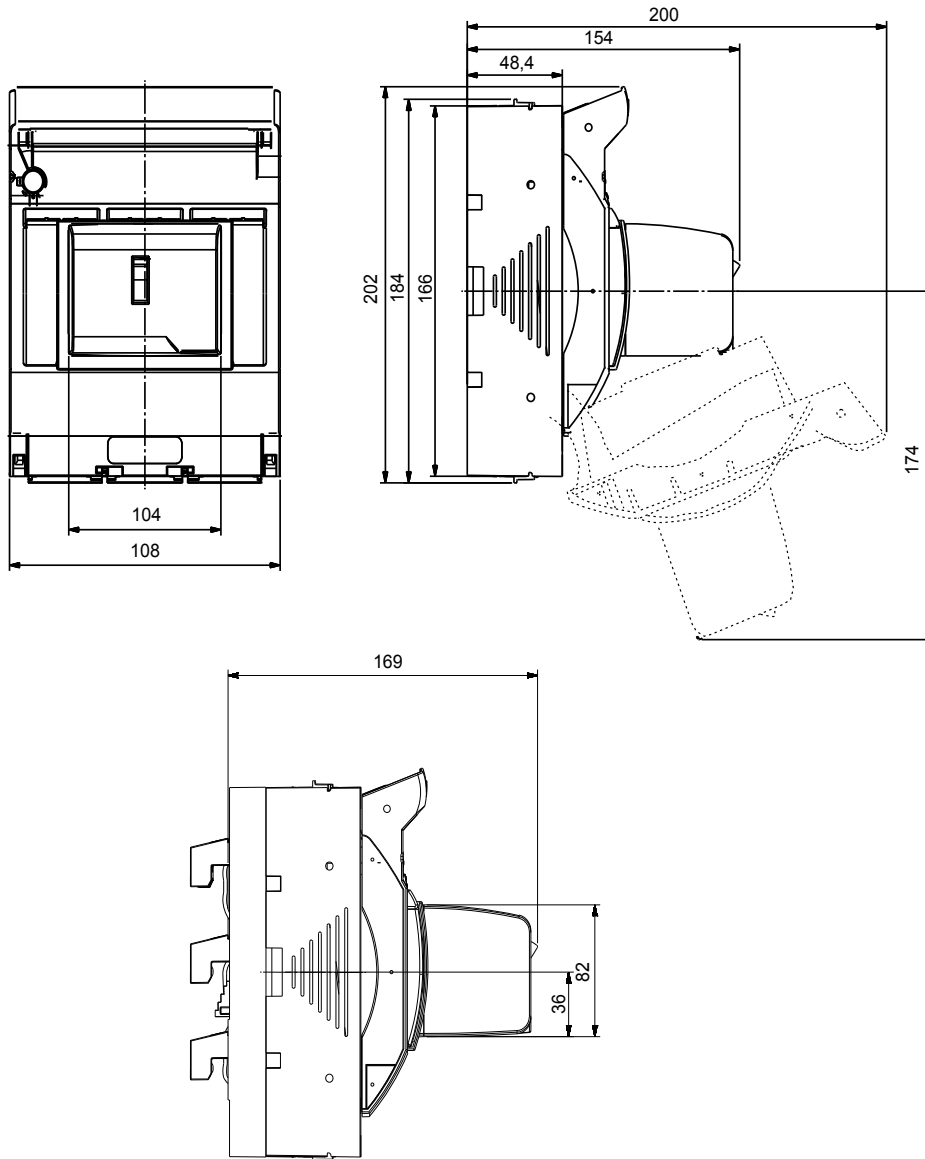
MULTIBLOC® 00.RST9

Size 00, 160A, 690VAC, Design for bus bar installation, Triple Pole

DIMENSIONS

MULTIBLOC® 00.ST9 and 00.RST9

triple pole with electro-mechanic fuse monitoring MZS (M 01135c-00)



Dimensions in mm

MULTIBLOC® 00.RST9

Size 00, 160A, 690VAC, Design for bus bar installation, Triple Pole

DIMENSIONS

Cable termination size 00 (MA 120c)

type	N	S	A	R
terminal	screw	clamp strap	Al/Cu clamp	frame clamp
cross section mm ²	Cu 16-70 Al 16-95	Cu 4-70 Al ---	Cu 1,5-70 Al 1,5-70 sectoral stranded Al 1,5-95 sectoral solid	Cu 2,5-70 Al ---
M(an) (Nm)	10	3-4	3-4	6

Dimensions in mm

MERSEN reserves the right to change, update or correct, without notice, any information contained in this datasheet.

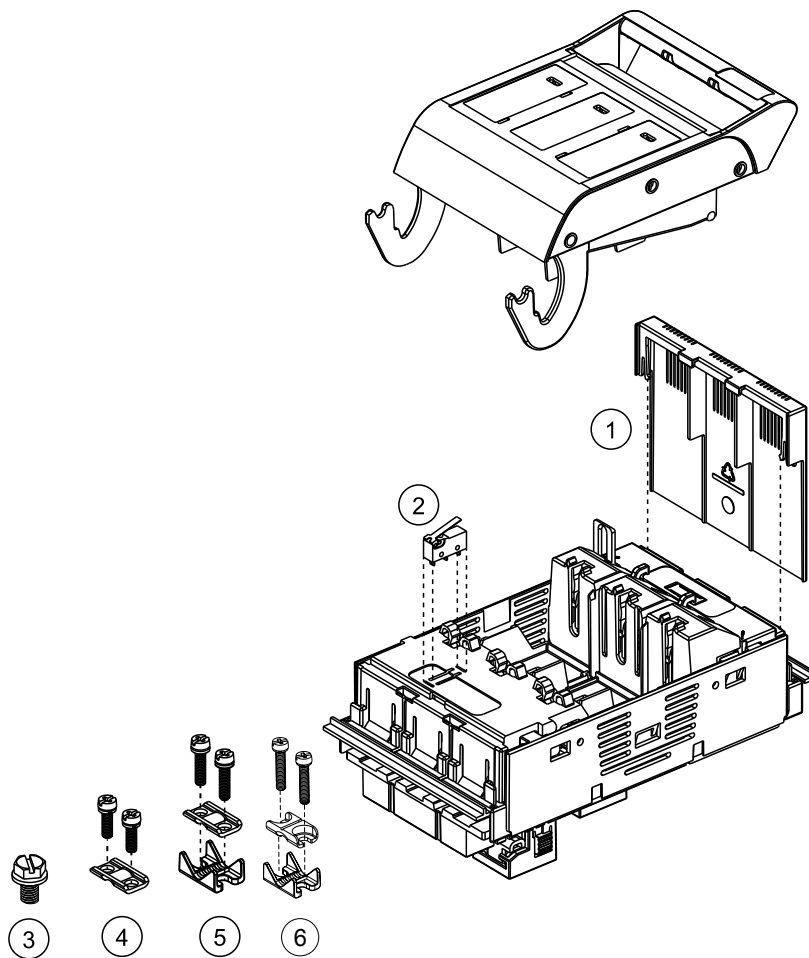
MULTIBLOC® 00.RST9

Size 00, 160A, 690VAC, Design for bus bar installation, Triple Pole

EXPLODED SKETCH

MULTIBLOC® 00.RST9 NH-fuse switch disconnecter
triple pole design for bus bar installation

(E 1.002.785)

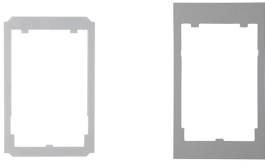


no.	articlenumber	short Description
1	1.003.325	bus bar touch protection
2	1.000.852	indicator for switch door position
3	00SZS	M8 terminal screw screw,1 Set = 3 pieces
4	00SZESK	Clamp strap 4 - 70mm ² , set = 3 pieces
5	00SZA70	Al/Cu clamp 1-5 - 70mm ² , set = 3 pieces
6	1.003.571	Al/Cu clamp 50 - 95 mm ² , set = 3 pieces

MULTIBLOC® 00.RST9

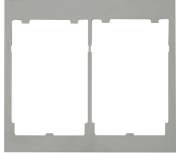
Size 00, 160A, 690VAC, Design for bus bar installation, Triple Pole

ACCESSORIES

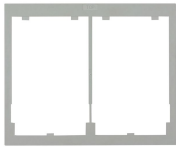


1.000.126

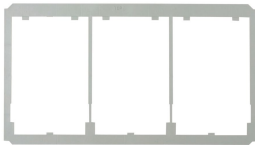
1.003.431



1.002.874



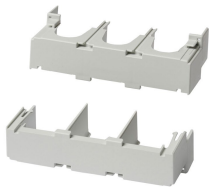
1.000.127



1.000.128



1.002.870



1.000.148



1.003.325

Cover shields

Catalog number	Item number	Design	Package	Weight
1.000.126	Y229285	cover shield for installation in distribution units size (width x height): 123 x 190 mm for one 00.ST9/00.RST9	1 piece	22 g
1.003.431	N1022960	cover shield for installation in distribution units size (width x height): 123 x 210 mm for one 00.ST9/00.RST9	1 piece	30 g
1.002.874	S1022964	cover shield for installation in distribution units size (width x height): 231 x 210 mm for two 00.ST9/00.RST9	1 piece	57 g
1.000.127	Z229286	cover shield for installation in distribution units size (width x height): 231 x 190 mm for two 00.ST9/00.RST9	1 piece	46 g
1.000.128	A229287	cover shield for installation in distribution units size (width x height): 339 x 190 mm for three 00.ST9/00.RST9	1 piece	30 g
1.002.870	R1022963	cover shield for installation in distribution units size (width x height) 231 x 210 mm for one 00.ST9/00.RST9 + lateral spare way cover right side	1 piece	95 g

Cover/shrouds for cable termination

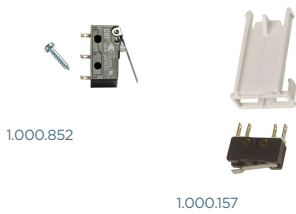
Catalog number	Item number	Design	Package	Weight
1.000.148	W229283	cover for cable terminal connection for 00.ST9 triple pole, 1 set = 2 pieces	1 set	43 g
1.003.325	F1023114	bus bar touch protection for 00.RST9	1 piece	25 g

MERSEN reserves the right to change, update or correct, without notice, any information contained in this datasheet.

MULTIBLOC® 00.RST9

Size 00, 160A, 690VAC, Design for bus bar installation, Triple Pole

ACCESSORIES



Indication facilities

Catalog number	Item number	Design	Package	Weight
1.000.852	Q1002285	indicator for switch door position micro switch, 1 change-over contact 5 A, 250 V	1 piece	90 g
1.000.157	S1022987	indicator for switch door position micro switch 1 "a" contact/ 1 "b" contact, 5 A, 250 V for MULTIBLOC® 00.RST9 for 40 mm bus bar system	1 piece	0.1 kg



Varieties of cable termination

Catalog number	Item number	Design	Package	Weight
00SZS	M229298	M8 terminal screw for switch gear size 00 1 set = 3 pieces	1 set	35 g
00SZESK	E214594	clamp strap Cu 4–70 mm ² for switch gear size 00 1 set = 3 pieces	1 set	35 g
00SZA70	R211523	Al/Cu clamp 1,5–70 mm ² for switch gear size 00 1 set = 3 pieces	1 set	75 g
1.003.571	V1033684	Al/Cu clamp 50–95 mm ² round stranded for switch gear size 00 1 set = 3 pieces	1 set	88 g
1.003.433	L1022958	triple clamp per pole 1.5 up to 16 mm ² 1 set = 3 pieces	1 set	0.14 kg
00SZSV6	K1022957	V-shaped lug size 00, M8, for V-terminal clamp size 00 for switch gear size 00 with screw terminal supplementary set for V-terminal with V-terminal clamps 1 set = 3 pieces	1 set	0.13 kg

MERSEN reserves the right to change, update or correct, without notice, any information contained in this datasheet.