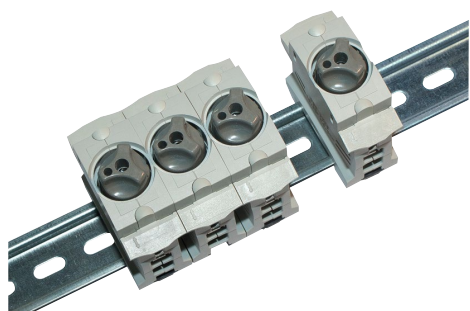


# INNOZED®

DO fuse-bases with touch protection

## FUSE HOLDERS, FUSE BASES AND SUPPORTS

### IEC DO & D FUSE BASES



INNOZED® is a fuse base for DO fuse-links, sizes D01 and D02. It is designed for a fast mounting on DIN-rail in distribution boards and panels, for residential and industrial applications.

INNOZED® has an integrated touch protection cover, that prevents from electrocution in built-in status. The use of comb-type busbars allows the positioning of the wires to be visually controlled. The use of wiring bus bars in the lower area of the terminal allows an easier insertion of the wires and visual control of the termination points at the same time.

INNOZED® allows a flexibility in the connection configuration. The fixing clamps consist of two separate compartments, that ensures a secure connection of two different wires. It is possible to use wires with different cross-sections from 4mm<sup>2</sup> to 35mm<sup>2</sup> or two similar wires up to 16mm<sup>2</sup> cross section.

### TECHNICAL DATA OVERVIEW

Voltage AC	400 VAC
Voltage DC	250 VDC
Amper (A)	63 A
SCCR	50 kA (AC), 8 kA (DC)
Mounting	Installation on to DIN rails to EN 60716
Body Material	plastic, silicon and halogen free
Contact Materials	Screws +/- (PZ2), galvanized, chromized (Chrome 3)
Product Size	D01,D02
Number of Poles	1-pole, 3-pole

### FEATURES & BENEFITS

- Single pole and triple pole design
- Snap on fixing for DIN-rails 35mm
- Multi termination of 2 conductors (35mm<sup>2</sup> + 16mm<sup>2</sup>) or comb bus bar and cable possible
- Frame clamp 1.5–35 mm<sup>2</sup> fine stranded for direct clamping or with wire end sleeve, M = 3.0 – 4.0 Nm
- Space saving fuse base
- High safety during installation, operation and maintenance
- Extensive touch protection due to integrated cover
- Double function clamp up to 35mm<sup>2</sup>
- Large termination area and good termination conditions for outgoing feeders
- Installation in 45mm standard cut out
- Materials used are synthetic, free of silicon and halogen

### APPLICATIONS

- Distribution boards for residential use
- panel boards for industrial use

### STANDARDS

- IEC/EN 60269-3
- VDE 0636-3



PRODUCT RANGE



04724.000000

**INNOZED D01 16 A, 400 V AC single pole E14**

Catalog number	Reference number	Design	Weight kg <sup>1</sup>	Package
04724.000000	W1032489	both sides double function clamp 1.5-35 mm <sup>2</sup>	0.08	9
<sup>1</sup> weight in kg per piece or set including package				



04734.000000

**INNOZED D01 16 A, 400 V AC triple pole E14**

Catalog number	Reference number	Design	Weight kg <sup>1</sup>	Package
04734.000000	X1032490	both sides double function clamp 1.5-35 mm <sup>2</sup>	0.24	3
<sup>1</sup> weight in kg per piece or set including package				



04725.000000

**INNOZED D02 63 A, 400 V AC single pole E18**

Catalog number	Reference number	Design	Weight kg <sup>1</sup>	Package
04725.000000	Y1032491	both sides double function clamp 1.5-35 mm <sup>2</sup>	0.08	9
<sup>1</sup> weight in kg per piece or set including package				



04735.000000

**INNOZED D02 63 A, 400 V AC triple pole E18**

Catalog number	Reference number	Design	Weight kg <sup>1</sup>	Package
04735.000000	Z1032492	both sides double function clamp 1.5-35 mm <sup>2</sup>	0.24	3
<sup>1</sup> weight in kg per piece or set including package				

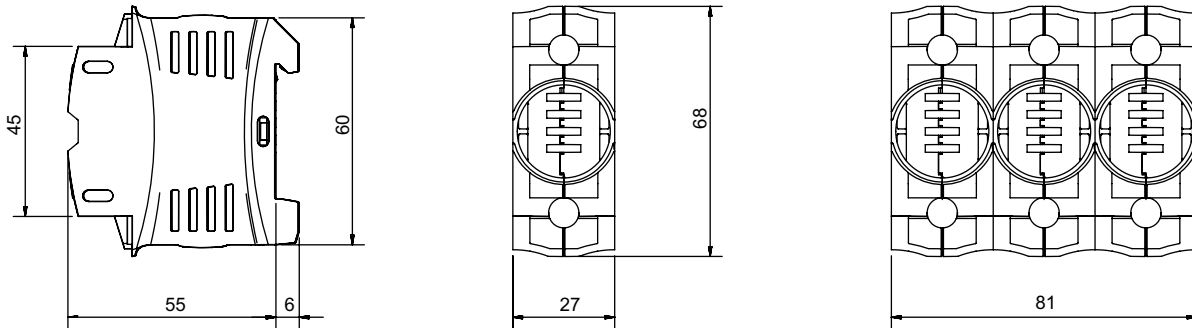
TECHNICAL DATA IN ACCORDANCE WITH EN / IEC 60269

	INNOZED D01, 16A 1-pole	INNOZED D01, 16A 3-pole	INNOZED D02, 63A 1-pole	INNOZED D02, 63A 3-pole
Number of poles/phases	1	3	1	3
Rated operational current I <sub>e</sub>	16 A	16 A	63 A	63 A
Max. power dissipation of fuse links P <sub>n</sub>	2,5W	2,5W	5,5W	5,5W
Rated operational voltage U <sub>e</sub>	400V AC, 250V DC	400V AC, 250V DC	400V AC, 250V DC	400V AC, 250V DC
Rated short circuit making capacity with fuse links U <sub>e</sub> = AC 400 V; I <sub>e</sub> = 16 A U <sub>e</sub> = AC 400 V; I <sub>e</sub> = 63 A U <sub>e</sub> = DC 250 V; I <sub>e</sub> = 16 A U <sub>e</sub> = DC 250 V; I <sub>e</sub> = 63 A	50 kA - 8 kA -	50 kA - 8 kA -	- 50 kA - 8 kA	- 50 kA - 8 kA
Rated impulse withstand voltage U <sub>imp</sub>	6 kV	6 kV	6 kV	6 kV
Rated frequency	50 Hz	50 Hz	50 Hz	50 Hz
Fire resistance	UL 94	UL 94	UL 94	UL 94
<b>Cable terminal connection</b>				
Standard cable terminal	frame clamp 1·5-35mm <sup>2</sup>	frame clamp 1·5-35mm <sup>2</sup>	frame clamp 1·5-35mm <sup>2</sup>	frame clamp 1·5-35mm <sup>2</sup>
Size	D01	D01	D02	D02
Temperature resistance	120°C	120°C	120°C	120°C
Track resistance/comperative tracking index	CTI 200	CTI 200	CTI 200	CTI 200

MERSEN reserves the right to change, update or correct, without notice, any information contained in this datasheet.

## DIMENSIONS

### INNOZED® DO fuse base with touch protection



Dimensions in mm

## ACCESSORIES



### DO screw caps 400V AC synthetic

Catalog number	Reference number	Description	Weight	Package
01714.000200	E212501	D01, E14, 16A, with testing hole	11.8 g	20
01715.000200	P211981	D02, E18, 63A, with testing hole	11.6 g	20
11714.000220	R214536	D01, E14, 16A, with sealing and testing hole	11.6 g	20
11715.000220	S214537	D02, E18, 63A, with sealing and testing hole	11.6 g	20
01715.000000	L206435	D02, E18, 63A, without testing hole	12 g	20
01715.890200	M214026	D02, E18, 63A, with adapter insert for fuse links size D01	12.4 g	20



### DO screw caps 400/440 VAC, 250 V DC porcelain, with removal grips

Catalog number	Reference number	Description	Weight	Package
01710.000200	H201211	D01, E14, 16A, with testing hole	16.4 g	20
01711.000200	T215044	D02, E18, 63A, with testing hole	18.5 g	20
01770.000200	F1033740	D01, E14, 16A, with testing hole	16.4 g	20

MERSEN reserves the right to change, update or correct, without notice, any information contained in this datasheet.

### ACCESSORIES

#### D0 cartridge ring adapter inserts D01 E14



01705.002000



01705.004000



01705.006000



01705.010000

Catalog number	Reference number	Description	Weight	Package
01705.002000	J216576	2A, pink	0.4 g	50
01705.004000	J219681	4A, brown	0.4 g	50
01705.006000	P206438	6A, green	0.4 g	50
01705.010000	M213014	10A, red	0.4 g	50



01706.020000



01706.025000



01706.035000



01706.050000



01706.002000



01706.004000



01706.006000



01706.010000



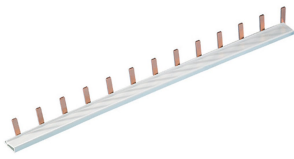
01706.016000

#### D0 cartridge ring adapter inserts D02 E18

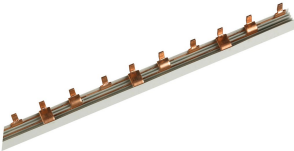
Catalog number	Reference number	Description	Application	Weight	Package
01706.020000	S200668	20A, blue	-	0.5 g	50
01706.025000	R213524	25A, yellow	-	0.6 g	50
01706.035000	J216070	35A, black	-	0.5 g	50
01706.050000	R218630	50A, white	-	0.7 g	50
01706.002000	K216577	2A, pink	For D01 fuse links in D02 fuse bases	0.5 g	50
01706.004000	S222127	4A, brown	For D01 fuse links in D02 fuse bases	0.6 g	50
01706.006000	R211983	6A, green	For D01 fuse links in D02 fuse bases	0.6 g	50
01706.010000	H216069	10A, red	For D01 fuse links in D02 fuse bases	0.6 g	50
01706.016000	Q218629	16A, grey	For D01 fuse links in D02 fuse bases	0.5 g	50

MERSEN reserves the right to change, update or correct, without notice, any information contained in this datasheet.

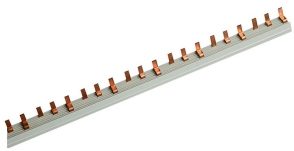
### ACCESSORIES



02963.000000



22963.003000



22963.363000



02901.000000



02901.350000



02903.165000

### Wiring bars / Insulated bus bars

Catalog number	Reference number	Design	Weight	Package
02963.000000	M215107	single pole, 16 mm <sup>2</sup> , partition 27 mm (distance of poles), peg design, L-shaped	171 g	5
22963.003000	K302873	triple pole, 16 mm <sup>2</sup> , partition 27 mm (distance of poles), peg design, L-shaped	638 g	5
22963.361000	J1002417	single pole, 35 mm <sup>2</sup> , partition 27 mm (distance of poles), peg design, L-shaped	469 g	5
22963.363000	L302874	triple pole, 35 mm <sup>2</sup> , partition 27 mm (distance of poles), peg design, L-shaped	1214 g	5
02901.000000	E302891	end cap for single pole wiring bus bar	0.4 g	10
02901.350000	K1002418	endcover for triple pole wiring bus bar	0.5 g	10
02903.165000	G302893	end cap for triple pole wiring bus bars up to 16 mm <sup>2</sup>	1.8 g	10
02903.350000	R302902	end cap for triple pole wiring bus bars up to 35 mm <sup>2</sup>	1.5 g	10