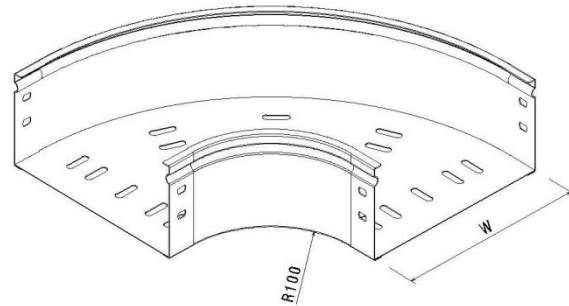
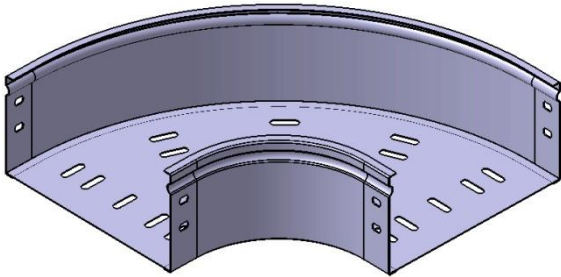


**P31 Flat Bend 90° H100 W100→300 mm
PG**

Reference(s) : 347 561 to 564



Ref.	Description	Raw Material (R.M.)	R.M. Standard	W (mm)	Thickness (mm)	Weight (kg)
347 561	Flat Bend 90° P31 H100 W100	DX51D Z275 (RE MIN 220MPA)	EN10346	100	1	0.8
347 562	Flat Bend 90° P31 H100 W150	DX51D Z275 (RE MIN 220MPA)	EN10346	150	1	1.1
347 563	Flat Bend 90° P31 H100 W200	DX51D Z275 (RE MIN 220MPA)	EN10346	200	1	1.4
347 564	Flat Bend 90° P31 H100 W300	DX51D Z275 (RE MIN 220MPA)	EN10346	300	1	2.2