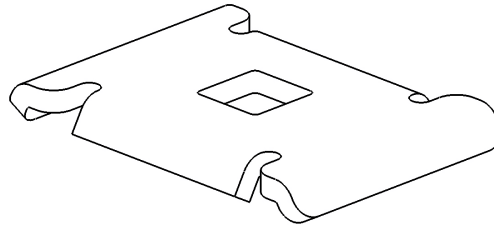


CE 35

Reference(s) : 558 180/184/187



1 RANGE

Reference	Coating	Material specification	Material standard	Finishes specifications	Thickness (mm/ <i>inch</i>)	Qty	Weight (Kg)
558 180	GS	DX 51 D Z275 MAC	EN 10327	/	2/0,08"	50	0.015
558 187	DC	S 235 JR	EN 10025	GEOMET 500 Grade A			
558 184	SS316L	X2 Cr Ni Mo 17-12-2	EN 10088	passivated/			

Dimensions in (mm/*inch*) :

