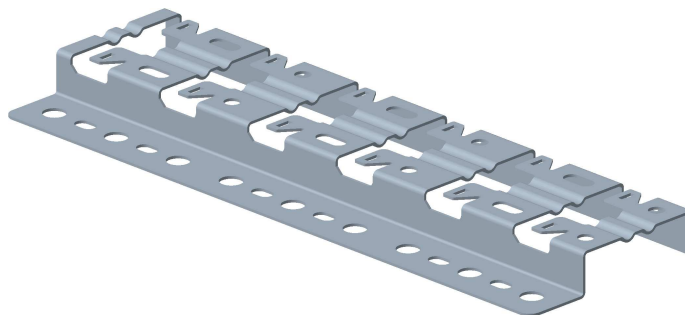


REHAUSSE R15/300
R15/300 STAND OFF BRACKET

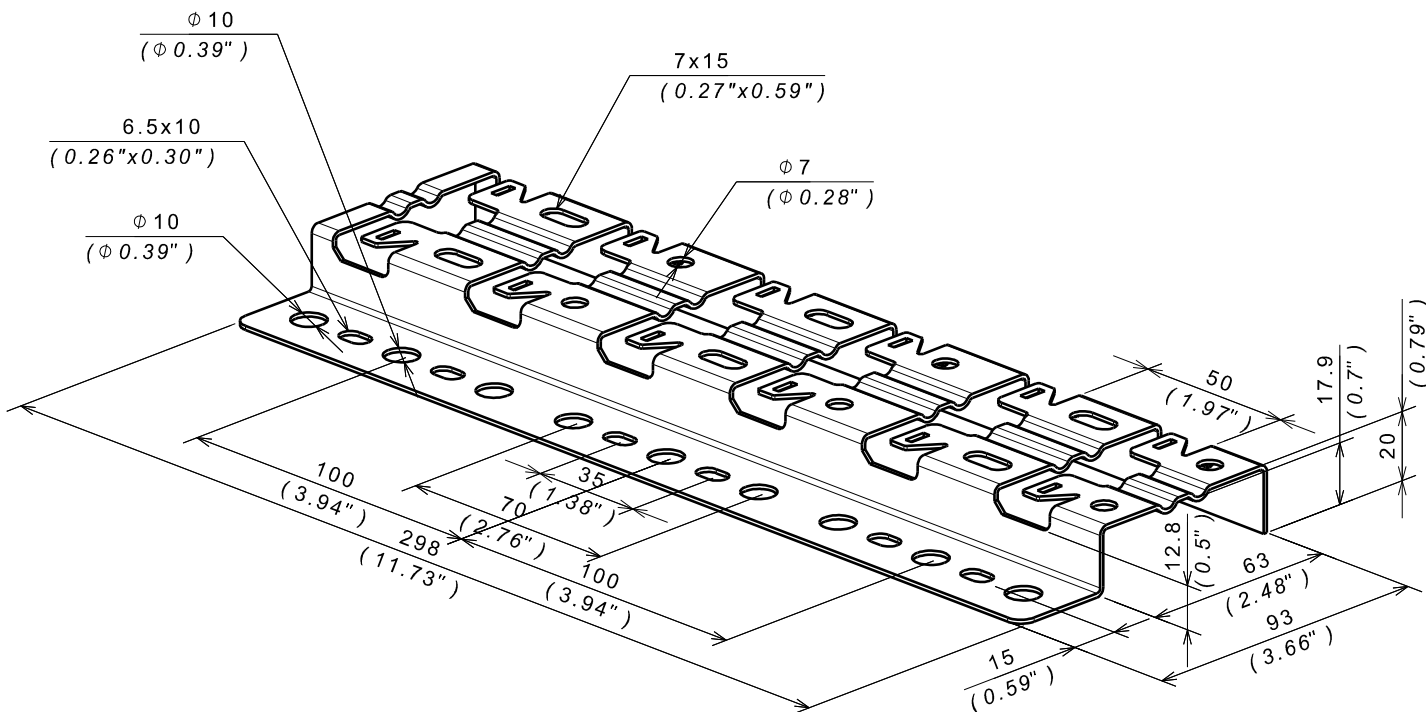
Reference(s) : 586 610/14/17



1. RANGE

| Designation | Code | Poids* / Weight* (Kg) (lb) | | Epaisseur / Thickness (mm) (inch) | | Matière / Material | Norme / Standard | Finition / Coating | Norme / Standard |
|----------------|---------|-------------------------------|-------|--------------------------------------|-------|-----------------------|------------------|--------------------|------------------|
| R15/300 GS | 586 610 | 0.281 | 0.620 | 1.2 | 0.05" | DX 51 D Z275 MAC | EN 10346 | GS / PG | |
| R15/300 ZM | 586 617 | 0.281 | 0.620 | 1.2 | 0.05" | DX 51 D ZM140-310 MAC | EN 10346 | ZM (ZnMg) | |
| R15/300 SS316L | 586 614 | 0.288 | 0.635 | 1.2 | 0.05" | X2 Cr Ni Mo 17-12-2 | EN 10088-2 | INOX316L / SS316L | |

2. DIMENSIONS (mm/inch)



REHAUSSE R15/300
R15/300 STAND OFF BRACKET

Reference(s) : 586 610/14/17

3. INSTALLATION

