

**RONDELLE PLATE  
WASHER**

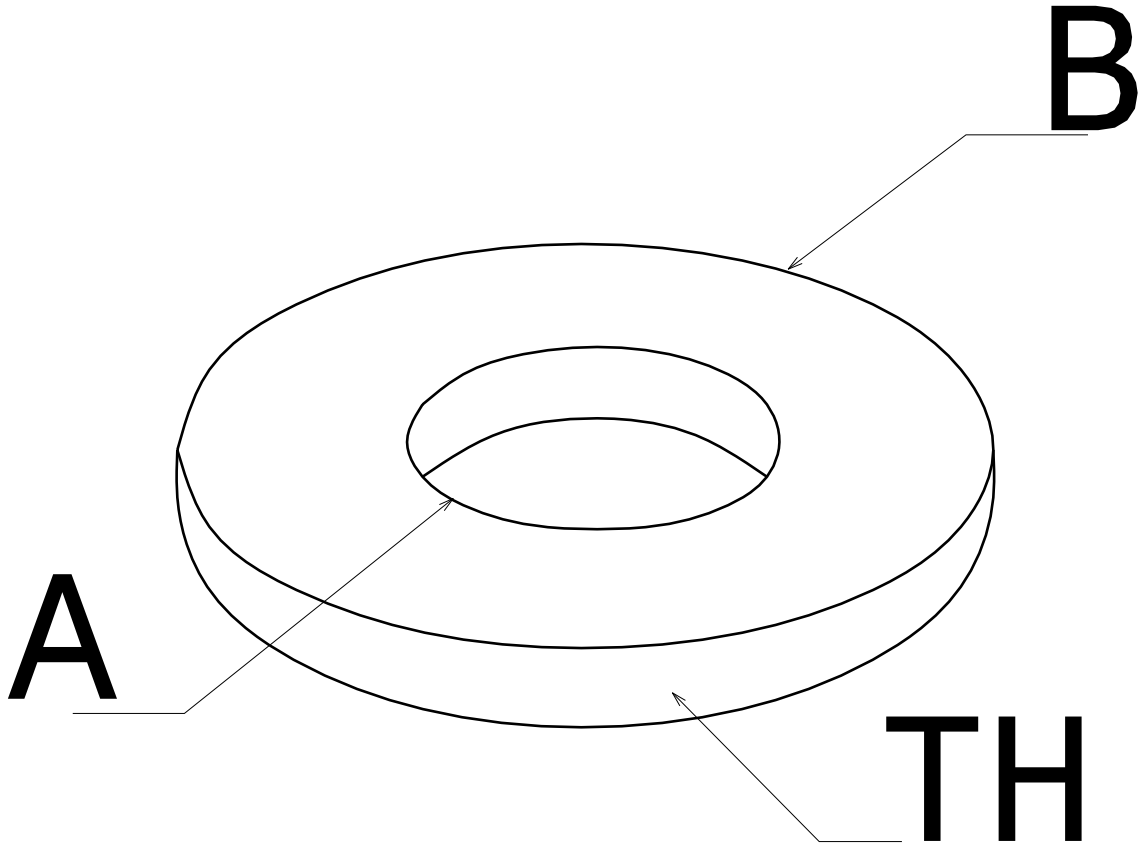
**316L**



**CABLE  
MANAGEMENT**

**FT0136-4**

**06 17**



REF	CODE	POIDS (Kg/1000)	WEIGHT (lb/1000)	A mm	A inch	B mm	B inch	TH mm	TH inch
RM6	801 504	0.180	0.397	6.4	0.25	12	0.47	1.6	0.062
RM8	801 514	0.440	0.971	8.4	0.33	16	0.62	1.6	0.062
RM10	801 524	0.500	1.102	10.5	0.413	20	0.787	2	0.079
RM12	801 534	0.740	1.633	13	0.51	24	0.94	2.5	0.098

NORMES / STANDARD

CLASSE / CLASS A4
PROTECTION / COATING INOX 316L

ISO 7089

Propriété exclusive de LEGRAND, ne peut être ni copié, ni transmis à des tiers sans autorisation écrite.  
Exclusive property of LEGRAND shouldn't be reproduced or transmitted to any people without written authorization