

**RONDELLE PLATE
WASHER**

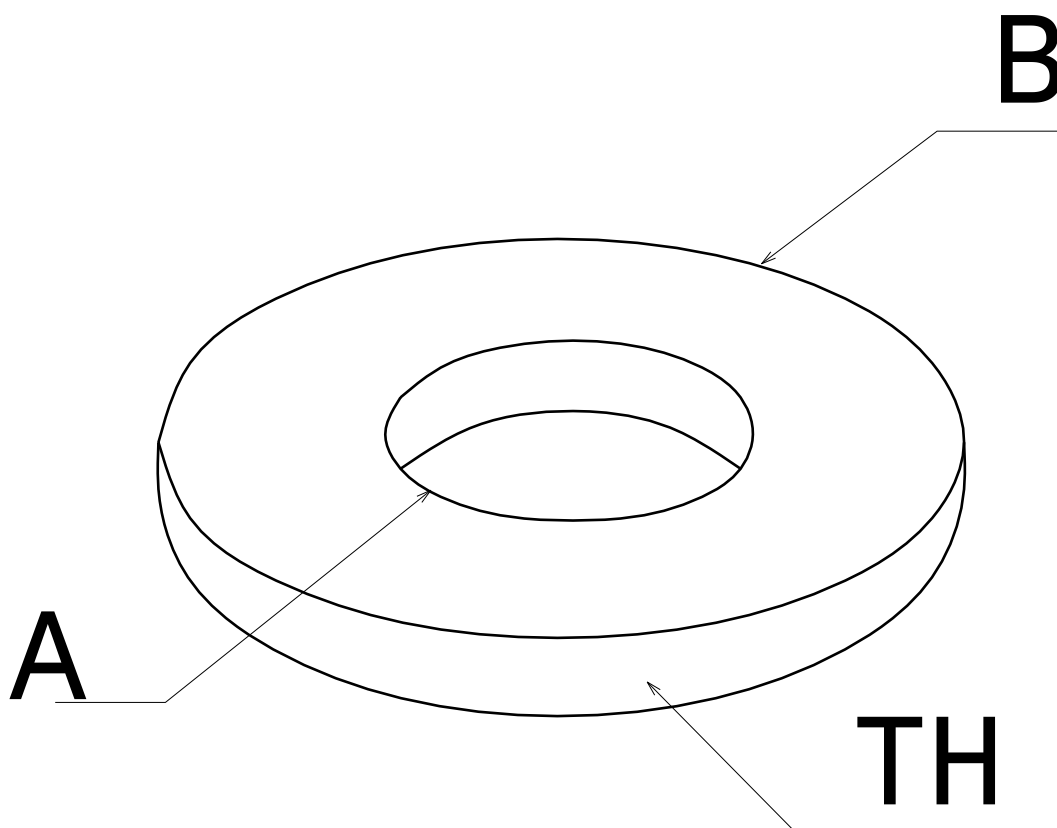
EZ



**CABLE
MANAGEMENT**

FT0136-1

06 17



REF	CODE	POIDS (Kg/100u)	WEIGHT (lb/100u)	A mm	A inch	B mm	B inch	TH mm	TH inch
RM8	801 511	0.440	0.971	8.4	0.33	18	0.709	1.5	0.059
RM10	801 521	0.500	1.102	10.5	0.413	20	0.787	2	0.079
RM12	801 531	0.740	1.633	13	0.51	24	0.94	2.5	0.098

NORMES / STANDARD

CLASSE / CLASS 100 HV	NFE 25 513 M
PROTECTION / COATING Fe / Zn 12 / A	NF EN 12 329

Propriété exclusive de LEGRAND, ne peut être ni copié, ni transmis à des tiers sans autorisation écrite.
Exclusive property of LEGRAND shouldn't be reproduced or transmitted to any people without written authorization