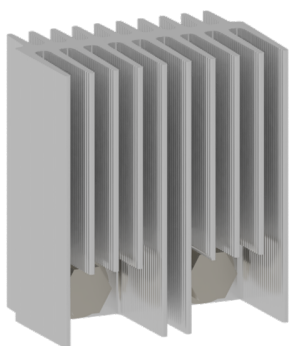


PRODUCT-DETAILS

OTDCKIT600FS11

OTDCKIT600FS11 Connection bar kit



General Information

Extended Product Type	OTDCKIT600FS11
Product ID	1SCA157320R1001
EAN	6417019865911
Catalog Description	OTDCKIT600FS11 Connection bar kit
Long Description	OTDCKIT600FS11 Connection Bar Kit - Connection bar for connecting two adjacent pole-terminals. Includes screws and nuts. Suitable for DC Switches M-series: OTDC600UF_22. Package of 2pcs.

Ordering

Minimum Order Quantity	1 piece
Customs Tariff Number	85389099

Popular Downloads

Data Sheet, Technical Information	1SCC301022C0201
Instructions and Manuals	1SCC301099M0201 9AKK107492A6191

Dimensions

Product Frame Size	M
Product Net Width	61 mm

	2.4 in
Product Net Height	89 mm
	3.5 in
Product Net Depth / Length	100 mm
	3.9 in
Product Net Weight	1.3 kg
	2.8 lb

Technical

Standards	UL98B and IEC 60947-1, -3
Special Functions	No
Color	Metal
Terminal Type	Lug terminals

Certificates and Declarations (Document Number)

Declaration of Conformity - CE	1SCC301227D2701
Instructions and Manuals	1SCC301099M0201 9AKK107492A6191

Container Information

Package Level 1 Units	bag 2 piece
Package Level 1 Width	65 mm 2.6 in
Package Level 1 Depth / Length	150 mm 5.9 in
Package Level 1 Height	250 mm 9.8 in
Package Level 1 Gross Weight	1.3 kg 2.8 lb
Package Level 1 EAN	6417019865911

Classifications

Object Classification Code	Q
ETIM 5	EC002498 - Accessories for low-voltage switch technology
ETIM 6	EC002498 - Accessories for low-voltage switch technology
ETIM 7	EC002498 - Accessories for low-voltage switch technology
UNSPSC	39122221
WEEE Category	Product Not in WEEE Scope

Categories

Low Voltage Products and Systems → Switches → DC Switch-Disconnectors Accessories

