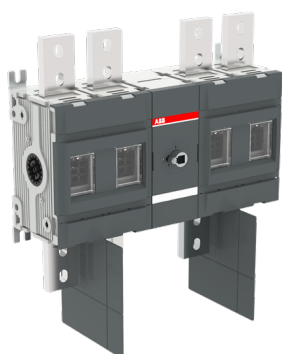


PRODUCT-DETAILS

# OTDC1000U22

## OTDC1000U22 PV Disconnect Switch



### General Information

Extended Product Type	OTDC1000U22
Product ID	1SCA143712R1001
EAN	6417019714837
Catalog Description	OTDC1000U22 PV Disconnect Switch
Long Description	OTDC1000U22 PV Disconnect Switch, Terminal bolt kit included, Handle and shaft need to be ordered separately, Base mounting, UL 1000 VDC 1000 A, IEC 1000 VDC 1600 A

### Ordering

Minimum Order Quantity	1 piece
Customs Tariff Number	85363090

### Popular Downloads

Data Sheet, Technical Information	1SCC301022C0201
Instructions and Manuals	1SCC301095M0202
Mechanical Drawings	OTDC800-1600_22_palikka.igs 1SCC307527F0201 1SCC307528F0201
Wiring Diagram	1SCC301042K0201

1SCC301043K0201

---

## Dimensions

---

Product Frame Size	L
Product Net Width	414.5 mm 16.3 in
Product Net Height	372 mm 14.6 in
Product Net Depth / Length	145.9 mm 5.7 in
Product Net Weight	18.7 kg 41.2 lb

---

## Technical

---

Connection Configuration	Single circuit 6a, 6b
Rated Operational Current DC-21B ( $I_g$ )	(1000 V) 1600 A
Conventional Free-air Thermal Current ( $I_{th}$ )	1600 A
Conventional Thermal Current ( $I_{the}$ )	Fully Enclosed 1000 A
Rated Impulse Withstand Voltage ( $U_{imp}$ )	12 kV
Rated Insulation Voltage ( $U_i$ )	1500 V
Rated Operational Voltage	1000 V
Rated Short-Circuit Making Capacity ( $I_{cm}$ )	(1000 V DC) 10 kA
Rated Short-time Withstand Current ( $I_{cw}$ )	(1000 V DC) 10 kA for 1 s 10 kA
Protection Type	Circuit breaker
Power Loss	at Rated Operating Conditions per Pole 35 W
Pollution Degree	3
Handle Type	Handle and shaft not included
Shaft Diameter	12 mm 0.47 in
Switches Operating Mechanism	Mechanism Between the Poles 22 (Between the Poles)
Position of Line Terminals	Top In - Bottom Out Bottom In - Top Out
Operating Mode	Front Operated
Standards	UL98B and IEC 60947-1, -3
Special Functions	No
Mounting Type	Base mounting
Number of Circuits	2
Number of Poles	4
Degree of Protection	Front IP20
Terminal Type	Lug terminals
Terminal Width	50 mm

	1.97 in
Tightening Torque	Cable Lug 50...75 N·m

## Technical UL/CSA

Maximum Operating Voltage UL/CSA	1000 V DC
Ampere Rating UL/CSA	1000VDC 1000 A
Tightening Torque UL/CSA	Cable Lug 50...75 N·m Cable Lug 443...664 lbf·in

## Environmental

RoHS Status	Following EU Directive 2011/65/EU
Environmental Information	1SCC301234D0201

## Certificates and Declarations (Document Number)

Declaration of Conformity - CE	1SCC301208D2702
DNV GL Certificate	1SCC301231D0201
Environmental Information	1SCC301234D0201
Instructions and Manuals	1SCC301095M0202
RoHS Information	1SCC301206D0205

## Container Information

Package Level 1 Units	box 1 piece
Package Level 1 Width	400 mm 15.7 in
Package Level 1 Depth / Length	435 mm 17.1 in
Package Level 1 Height	170 mm 6.7 in
Package Level 1 Gross Weight	20 kg 44.1 lb
Package Level 1 EAN	6417019714837

## Classifications

Object Classification Code	Q
ETIM 5	EC000216 - Switch disconnecter
ETIM 6	EC000216 - Switch disconnecter
ETIM 7	EC000216 - Switch disconnecter
UNSPSC	39122233
WEEE Category	5. Small Equipment (No External Dimension More Than 50 cm)

---

## Categories

---

Low Voltage Products and Systems → Switches → DC Switch-Disconnectors

