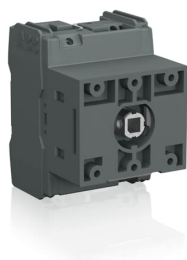


PRODUCT-DETAILS

OTDC25UST2

OTDC25UST2 PV Disconnect Switch



General Information

Extended Product Type	OTDC25UST2
Product ID	1SCA134578R1001
EAN	6417019633602
Catalog Description	OTDC25UST2 PV Disconnect Switch
Long Description	OTDC25UST2 PV Disconnect Switch, Terminal bolt kit included, Handle and shaft need to be ordered separately, Door mounting, US single-wire break, UL 600 VDC 25 A single circuit, IEC 660 VDC 25 A single circuit, IEC 1000 VDC 16 A single circuit

Ordering

Minimum Order Quantity	1 piece
Customs Tariff Number	85363030

Popular Downloads

Data Sheet, Technical Information	1SCC301022C0201
Instructions and Manuals	1SCC301086M0204
Mechanical Drawings	otdc16-32ut-ust2.igs 1SCC307473F0001 1SCC307474F0001

Dimensions

Product Frame Size	XS
Product Net Width	54.5 mm 2.1 in
Product Net Height	74 mm 2.9 in
Product Net Depth / Length	64 mm 2.5 in
Product Net Weight	0.2 kg 0.4 lb

Technical

Rated Operational Current DC-21B (I_{θ})	(660 V) 25 A
Conventional Free-air Thermal Current (I_{th})	50 A
Conventional Thermal Current (I_{the})	Fully Enclosed 40 A
Rated Impulse Withstand Voltage (U_{imp})	8 kV
Rated Insulation Voltage (U_i)	1000 V
Rated Operational Voltage	1000 V
Rated Short-Circuit Making Capacity (I_{cm})	(1000 V DC) 1 kA
Rated Short-time Withstand Current (I_{cw})	(1000 V DC) 1 kA for 1 s 1 kA
Rated Conditional Short- Circuit Current (I_{nc})	(1000 V DC) 10 kA
Protection Type	UL508i RK5 fuselink max. 70A, IEC60947 gPV fuselink max. 80A
Power Loss	at Rated Operating Conditions per Pole 0.2 W
Pollution Degree	3
Handle Type	Handle and shaft not included
Shaft Diameter	6 mm 0.24 in
Switches Operating Mechanism	Mechanism on Top of the Switch
Position of Line Terminals	Top In - Bottom Out Bottom In - Top Out
Operating Mode	Front Operated
Standards	UL508i and IEC 60947-1, -3
Special Functions	US single-wire break
Mounting Type	Door mounting
Number of Circuits	1
Number of Poles	2
Cable Cross-Section	2.5 ... 16 mm ² 12-6 AWG
Degree of Protection	Front IP20
Terminal Type	Screw Terminals

Tightening Torque	1.2...1.4 N·m
-------------------	---------------

Technical UL/CSA

Maximum Operating Voltage UL/CSA	600 V DC
Ampere Rating UL/CSA	600VDC 25 A
Tightening Torque UL/CSA	1.2...1.4 N·m 10.6...12.4 lbf·in

Environmental

RoHS Status	Following EU Directive 2011/65/EU
-------------	-----------------------------------

Certificates and Declarations (Document Number)

CCC Certificate	CCC OTDC16-32.pdf
Declaration of Conformity - CE	1SCC301192D2704
DNV GL Certificate	1SCC301231D0201
Instructions and Manuals	1SCC301086M0204
RoHS Information	1SCC301207D0203
UL Certificate	UL certificate OTDC16-32.pdf

Container Information

Package Level 1 Units	box 1 piece
Package Level 1 Width	100 mm 3.9 in
Package Level 1 Depth / Length	64 mm 2.5 in
Package Level 1 Height	100 mm 3.9 in
Package Level 1 Gross Weight	0.2 kg 0.4 lb
Package Level 1 EAN	6417019633602

Classifications

Object Classification Code	Q
ETIM 5	EC000216 - Switch disconnecter
ETIM 6	EC000216 - Switch disconnecter
ETIM 7	EC000216 - Switch disconnecter
UNSPSC	39122233
WEEE Category	5. Small Equipment (No External Dimension More Than 50 cm)

Categories

Low Voltage Products and Systems → Switches → DC Switch-Disconnectors

