

## RACCORDS INOX MOULES FILETES CLASS 150 PN20 BSP GAMME INITIALE

Raccords inox moulés filetés BSP pour fluides courants compatibles du groupe 2.  
Fabrication par procédé de cire perdue.



**Dimensions :** DN1/8" à DN4"  
**Raccordement :** Femelle, Mâle BSP ou cannelé  
**Température Mini :** -25°C  
**Température Maxi :** +180°C  
**Pression Maxi :** 20 Bars  
**Caractéristiques :** Fabrication par procédé de cire perdue  
Raccords moulés

**Matière :** Inox ASTM A351 CF8M

**RACCORDS INOX MOULES FILETES CLASS 150 PN20 BSP GAMME INITIALE**

**CARACTERISTIQUES :**

- Fabrication par procédé de "cire perdue"
- Filetage conique BSP
- Taraudage cylindrique BSP

**UTILISATION :**

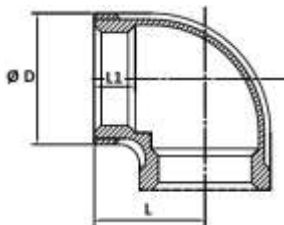
- Pour fluides courants compatibles
- Température mini admissible Ts : - 25°C
- Température maxi admissible Ts : + 180°C
- Pression maxi admissible Ps : 20 bars

**GAMME :**

- DN 1/8" au DN 4" suivant modèles
- Raccords en inox ASTM A351 CF8M

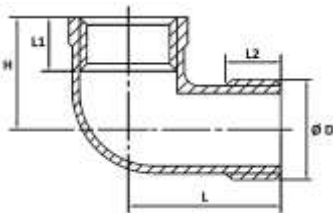
**DIMENSIONS ( en mm ) :**

- **Coude 90° F. F. ( DN 1/8"– 4" ) Ref. 2070**



DN	1/8"	1/4"	3/8"	1/2"	3/4"	1"	1"1/4"	1"1/2"	2"	2"1/2"	3"	4"
L	17	19	23	25	27.5	33	40	43	52	65	75	92
L1	5.6	8.4	8.8	9.2	10.2	11.6	13.5	13.5	16.9	18.6	21	25.8
Ø D	15.5	19	22.5	26.5	32.5	39.5	48.5	55	67.5	84	97	123.5
Poids (Kg)	0.02	0.03	0.05	0.05	0.06	0.12	0.18	0.26	0.44	0.75	1.19	2.21

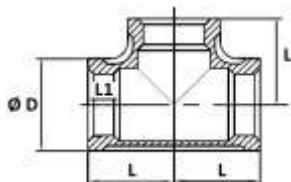
- **Coude 90° M. F. ( DN 1/8"– 3" ) Ref. 2072**



DN	1/8"	1/4"	3/8"	1/2"	3/4"	1"	1"1/4"	1"1/2"	2"	2"1/2"	3"
L	26	28	30	34	38.5	45	52.5	56	68.5	81.5	92.5
L1	8	11.5	12	9.2	10.2	11.6	13.5	13.5	16.9	18.6	21
L2	8	9.5	10.5	13	14.5	16	18	18	20	22	25
H	17	19	23	24	27	32	39	41.5	51	65	75
Ø D	10	13.6	17.2	21.5	27.1	34.3	43	49	61.5	77	90
Poids (Kg)	0.02	0.03	0.04	0.06	0.06	0.13	0.17	0.27	0.43	0.77	1.09

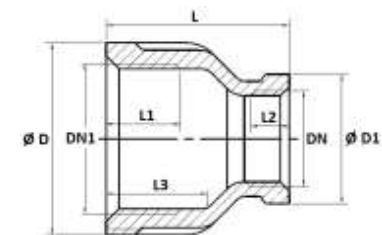
**RACCORDS INOX MOULES FILETES CLASS 150 PN20 BSP GAMME INITIALE**
**DIMENSIONS ( en mm ) :**

- **Té F. F. F. ( DN 1/8"– 4" ) Ref. 2071**



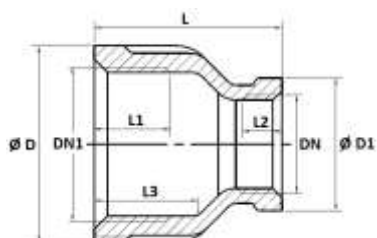
DN	1/8"	1/4"	3/8"	1/2"	3/4"	1"	1"1/4"	1"1/2"	2"	2"1/2"	3"	4"
L	17	19	23	25	27.5	33	40	43	52	65	75	92
L1	5.6	8.4	8.8	9.2	10.2	11.6	13.5	13.5	16.9	18.6	21	25.8
Ø D	15.5	19	22.5	26.5	32.5	39.5	48.5	55	67.5	84	97	123.5
Poids (Kg)	0.03	0.04	0.05	0.07	0.09	0.14	0.24	0.33	0.56	1	1.45	2.22

- **Réduction F. F. ( DN 1/8"– 2" ) Ref. 2073**



DN	1/8"	1/4"	3/8"	1/2"	3/4"	1"	1"1/4"	1"1/2"
DN1	1/4"	3/8"	1/2"	3/4"	1"	1"1/4"	1"1/2"	2"
Ø D	19	22.5	26.8	32.5	39.8	48.8	55.2	67.5
Ø D1	15.5	19	22.5	26.8	32.5	39.8	48.8	55.2
L	25.5	29	31	33.5	38	41	45.5	49
L1	9.7	10.1	13.2	14.5	16.8	19.1	19.1	23.4
L2	6.5	9.7	10.1	13.2	14.5	16.8	19.1	19.1
L3	13	13	16.5	18	21	23	23	28
Poids (Kg)	0.02	0.02	0.02	0.04	0.11	0.12	0.19	0.27

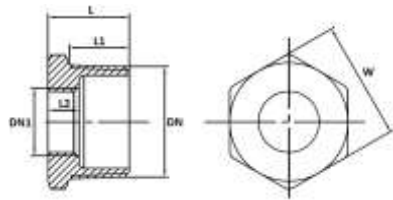
- **Double réduction F. F. ( DN 1/8"– 2" ) Ref. 2074**



DN	1/8"	1/4"	3/8"	1/2"	3/4"	1"	1"1/4"
DN1	3/8"	1/2"	3/4"	1"	1"1/4"	1"1/2"	2"
Ø D	22.5	26.8	32.5	39.8	48.8	55.2	67.5
Ø D1	15.5	19	22.5	26.8	32.5	39.8	48.8
L	29	31	33.5	38	41	45.5	49
L1	10.1	13.2	14.5	16.8	19.1	19.1	23.4
L2	6.5	9.7	10.1	13.2	14.5	16.8	19.1
L3	13	17	18	21	23	24	28
Poids (Kg)	0.03	0.03	0.04	0.07	0.14	0.15	0.29

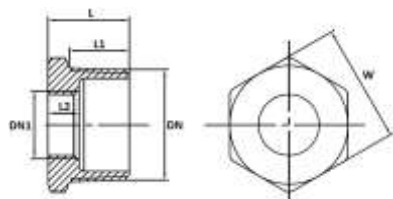
**RACCORDS INOX MOULES FILETES CLASS 150 PN20 BSP GAMME INITIALE**
**DIMENSIONS ( en mm ) :**

- Réduction M. F. ( DN 1/8"– 2" ) Ref. 2075



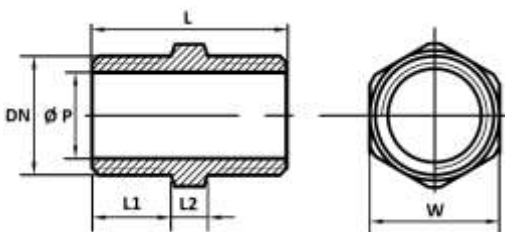
DN	1/4"	3/8"	1/2"	3/4"	1"	1"1/4"	1"1/2"	2"
DN1	1/8"	1/4"	3/8"	1/2"	3/4"	1"	1"1/4"	1"1/2"
L	16	16.5	19.5	21	24	27.5	28.5	32
L1	11.5	11.5	14.5	15.5	18	21	22	25
L2	-	8	9	10.5	11.5	12.5	15	15
W	14	18	22	28	35	43.5	49.5	62
Poids (Kg)	0.01	0.01	0.02	0.03	0.04	0.08	0.1	0.19

- Double réduction M. F. ( DN 1/8"– 2" ) Ref. 2078



DN	3/8"	1/2"	3/4"	1"	1"1/4"	1"1/2"	2"
DN1	1/8"	1/4"	3/8"	1/2"	3/4"	1"	1"1/4"
L	16.5	19.5	21	24	27.5	28.5	32
L1	11.5	14.5	15.5	18	21	22	25
L2	7	8	9	10.5	11.5	12.5	15
W	18	22	28	35	43.5	49.5	62
Poids (Kg)	0.01	0.02	0.03	0.05	0.1	0.14	0.24

- Mamelon hexagonal ( DN 1/8"– 2" ) Ref. 2084

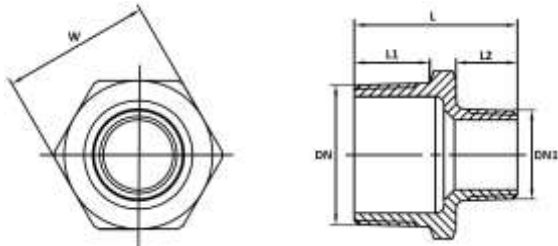


DN	1/8"	1/4"	3/8"	1/2"	3/4"	1"	1"1/4"	1"1/2"	2"
L	20	25	27	34	36.5	42	47.5	47.5	57
L1	8	10.5	11	14.5	15.5	18	20.5	20.5	25
L2	4	4	5	5	5.5	6	6.5	6.5	7
Ø P	7	9.5	13	16.5	21.5	27.5	36	41.5	52.5
W	11	15	18	22	28	35	43.5	49.5	62
Poids (Kg)	0.01	0.01	0.02	0.03	0.05	0.08	0.1	0.13	0.23

**RACCORDS INOX MOULES FILETES CLASS 150 PN20 BSP GAMME INITIALE**

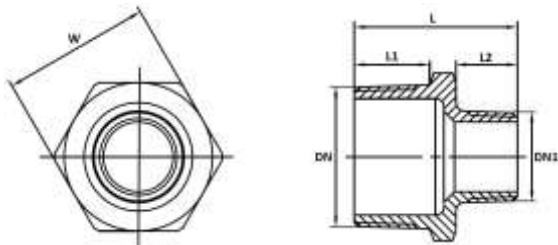
**DIMENSIONS ( en mm ) :**

- Réduction mâle - mâle ( DN 1/8" - 2" ) Ref. 2085



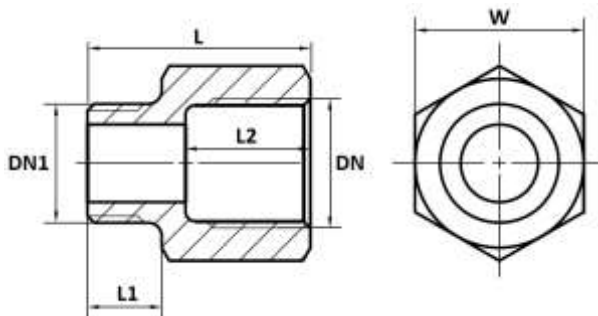
DN	1/4"	3/8"	1/2"	3/4"	1"	1"1/4	1"1/2	2"
DN1	1/8"	1/4"	3/8"	1/2"	3/4"	1"	1"1/4	1"1/2
L	22.5	24	30.5	35.5	39.5	45	47.5	52.5
L1	10.5	11	14.5	15.5	18	20.5	20.5	25
L2	8	10.5	11	14.5	15.5	18	20.5	20.5
W	15	18	22	28	35	43.5	49.5	62
Poids (Kg)	0.01	0.02	0.03	0.04	0.06	0.1	0.12	0.22

- Double réduction mâle - mâle ( DN 1/8" - 2" ) Ref. 2086



DN	3/8"	1/2"	3/4"	1"	1"1/4	1"1/2	2"
DN1	1/8"	1/4"	3/8"	1/2"	3/4"	1"	1"1/4
L	24	29.5	32	38.5	42.5	45	52.5
L1	11	14	15.5	18	20.5	20.5	25
L2	8	10.5	11	14.5	15.5	18	20.5
W	18	22	28	35	43.5	49.5	62
Poids (Kg)	0.03	0.02	0.04	0.07	0.08	0.13	0.22

- Réduction femelle - mâle ( DN 1/8" - 2" ) Ref. 2087

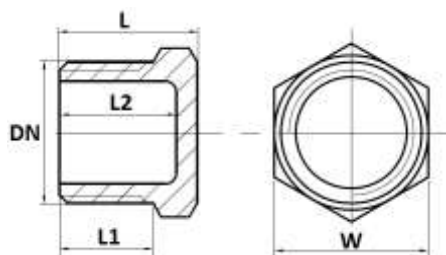


DN	1/4"	3/8"	1/2"	3/4"	1"	1"1/4	1"1/2	2"
DN1	1/8"	1/4"	3/8"	1/2"	3/4"	1"	1"1/4	1"1/2
L	25	28	32	37	41.5	47	49.5	54
L1	8	10.5	11	14.5	15.5	18	20.5	20.5
L2	14	14.5	18	19	22.5	25	25	29.5
W	17	20.5	25	31	38	47	53	66
Poids (Kg)	0.02	0.03	0.05	0.08	0.13	0.21	0.26	0.42

**RACCORDS INOX MOULES FILETES CLASS 150 PN20 BSP GAMME INITIALE**

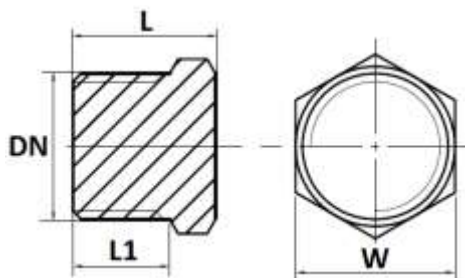
**DIMENSIONS ( en mm ) :**

- Bouchon mâle ( DN 1/2"– 2" ) Ref. 2076



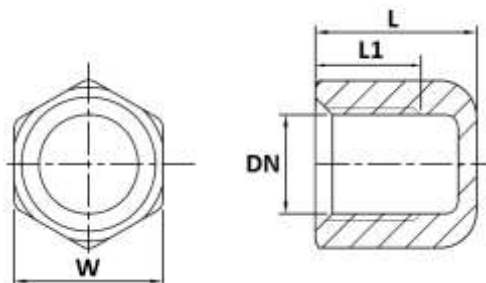
DN	1/2"	3/4"	1"	1"1/4"	1"1/2"	2"
L	19.5	21	24	27	27	32
L1	14.5	15.5	18	20.5	20.5	25
L2	17.8	19.3	22	24.7	24.5	29
W	22	28	35	43.5	49.5	62
Poids (Kg)	0.02	0.03	0.05	0.08	0.11	0.19

- Bouchon mâle plein ( DN 1/8"– 2" ) Ref. 2077



DN	1/8"	1/4"	3/8"	1/2"	3/4"	1"	1"1/4"	1"1/2"	2"
L	12	14.5	16	19.5	21	24	27	27	32
L1	8	10.5	11	14.5	15.5	18	20.5	20.5	25
W	12	14	17	22	27	34	46	50	60
Poids (Kg)	0.01	0.02	0.03	0.05	0.09	0.16	0.29	0.37	0.7

- Bouchon femelle hexagonal ( DN 1/4"– 2" ) Ref. 2090

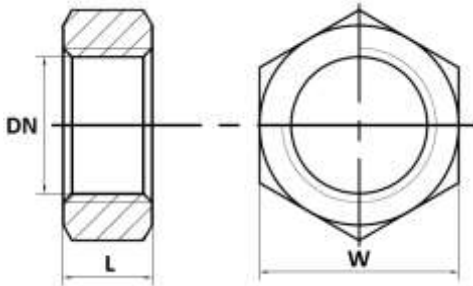


DN	1/4"	3/8"	1/2"	3/4"	1"	1"1/4"	1"1/2"	2"
L	14	14.5	18.5	19	22	25	25	30
L1	9.7	10.1	13.2	14.5	16.8	19.1	19.1	23.4
W	17	20.5	25	30.5	37.5	46	52.5	64.5
Poids (Kg)	0.02	0.02	0.03	0.03	0.07	0.11	0.15	0.26

**RACCORDS INOX MOULES FILETES CLASS 150 PN20 BSP GAMME INITIALE**

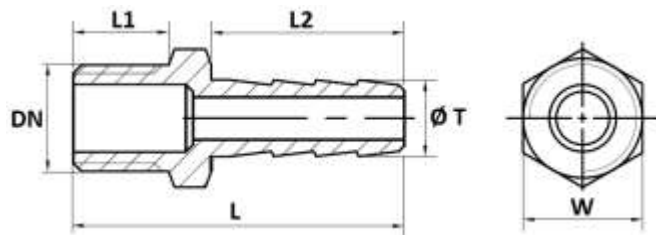
**DIMENSIONS ( en mm ) :**

- **Ecrou hexagonal ( DN 1/8"– 2" ) Ref. 2089**



DN	1/8"	1/4"	3/8"	1/2"	3/4"	1"	1"1/4	1"1/2	2"
L	5	6	6	7	7	9	11	11	13
W	15	18	22	27	32	40	48	55	68
Poids (Kg)	0.01	0.01	0.01	0.02	0.02	0.03	0.05	0.06	0.11

- **Embout tétine mâle ( DN 1/4"– 2" ) Ref. 2088**



DN	1/4"	3/8"	1/2"	3/4"	1"	1"1/4	1"1/2	2"
L	34.5	41	48.5	58	67	70	74	83
L1	10.5	11	14.5	15.5	18	20.5	20.5	25
L2	20	25	29	37	43	43	47	51
Ø T	9	11.5	15	20	27	33	39.5	52
W	15	18	22	28	35	43.5	49.5	62
Poids (Kg)	0.01	0.02	0.02	0.05	0.12	0.19	0.27	0.33

**NORMALISATIONS :**

- Fabricant certifié ISO 9001 : 2015
- DIRECTIVE 2014/68/EU : Produits exclus de la directive (Article 4, §3)
- Filetage mâle BSP conique suivant la norme ISO 7/1 R pour les embouts 2072, 2075, 2076, 2077, 2078, 2084, 2085, 2086, 2087 et 2088
- Taraudage cylindrique BSP suivant la norme ISO 7/1 Rp pour les raccords 2070, 2071, 2072, 2073, 2074, 2075, 2078, 2087, 2089 et 2090

**PRECONISATIONS :** Les avis et conseils, les indications techniques, les propositions, que nous pouvons être amenés à donner ou à faire, n'impliquent de notre part aucune garantie. Il ne nous appartient pas d'apprécier les cahiers des charges ou descriptifs fournis. Il appartient au client de vérifier l'adéquation entre le choix du matériel et les conditions réelles d'utilisation.